

Belden Deutschland GmbH • Im Gewerbepark 2 • 58579 Schalksmühle

**Supplement to Product Change Notification PCN-2016-02-17**

28.06.2018

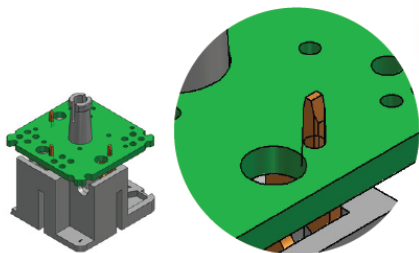
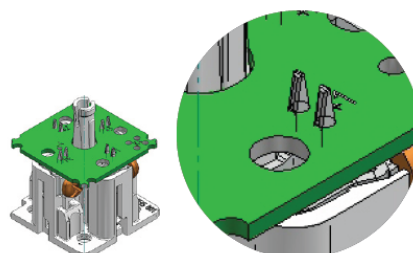
Dear Valued Customer,

in order to meet the latest market and technology trends, we are constantly refining products in regards to innovation and high quality. In this context, Belden has modified the contact carriers and circuit boards of their GDM standard valve connectors type A in 2016. For further information regarding the changes made please read the product change notification [PCN-2016-02-17](#).

In the course of PCN-2016-02-17 there was also a change of circuit boards which lead to a modification of defined electronic parts with which the PCB is fitted. As this has led to further inquiries in the past we would like to use this document to further address the changes made and to point them out in more detail. Thus this letter supplements an already existing product change notification however does not contain any new changes.

**PCB Technology, Contacting (double PressFit) and Protective Circuitry**

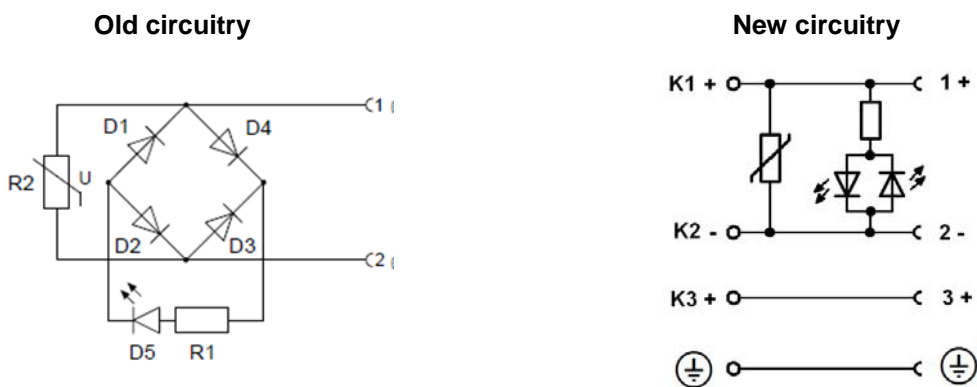
In order to match the latest PCB technology for all our circuits, Belden redesigned the PCB-assembling and the connection to the contact-bearer. To guarantee a better vibration-behavior and reliability of contact resistance and joints, the design has been up-graded to a double PressFit connection.

**Old version****New version**

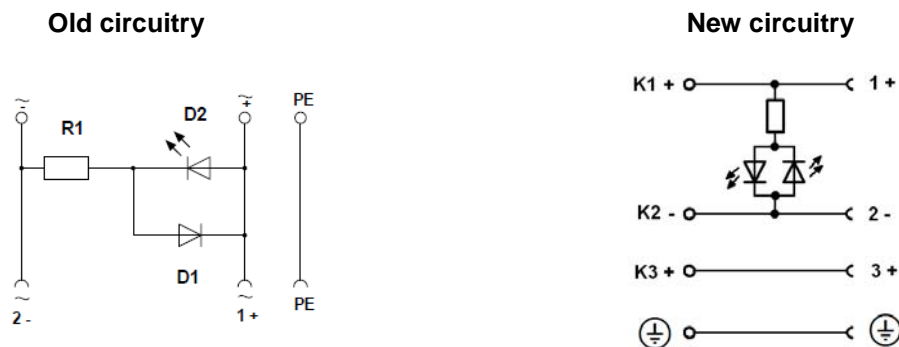
Belden Deutschland GmbH • Im Gewerbepark 2 • 58579 Schalksmühle

In the course of the PCB improvement defined protection circuitries were modified as well. So far bridge rectifiers and blocking diodes were used in combination with light-emitting diodes (LED) to ensure the functionality of the LED also with alternating current. At the same time reverse polarity protection was ensured with an antiparallel diode. In the scope of PCN-2016-02-17 the previous monopolar LEDs were replaced by bipolar LED versions, which can be operated with direct as well as with alternating current. A prior rectification is thus no longer necessary. Also, with the bipolar light-emitting diodes the risk of polarity reversal is no longer given as they enable a flexible connection. Due to the replacement of former monopolar LEDs by bipolar light-emitting diodes the following new circuit diagrams emerge:

**GDML 2016 LED 24 GB black or grey as well as GDML 2011 LED 24 GB black or grey**



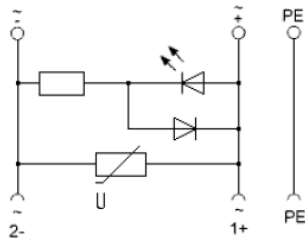
**GDML 2016 LED \* (YE) black or grey as well as GDML 2011 LED \* (YE) black or grey**



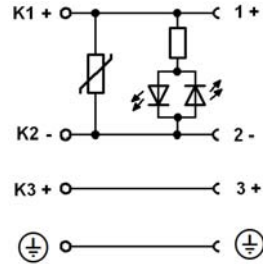
Belden Deutschland GmbH • Im Gewerbepark 2 • 58579 Schalksmühle

**GDML 2016 LED \* VR (YE) *black or grey* as well as GDML 2011 LED \* VR (YE) *black or grey***

**Old circuitry**



**New circuitry**



Please find a complete list of all affected articles as well as their material number and article description at the end of this document. For further queries please don't hesitate to contact us.

| <u>Name</u> | <u>Phone</u>     | <u>Fax</u>       | <u>Email</u>         |
|-------------|------------------|------------------|----------------------|
| Nina Baur   | +49-7127-14-1681 | +49-7127-14-1125 | Nina.Baur@Belden.com |

With kind regards

**i. V. Joachim Kiera**  
Senior Manager Product Manager

**i.A. Nina Baur**  
Junior Product Manager

*Belden, Belden Sending All The Right Signals, Hirschmann, GarrettCom, Tofino Security, Lumberg Automation and the Belden logo are trademarks or registered trademarks of Belden Inc. or its affiliated companies in the United States and other jurisdictions. Belden and other parties may also have trademark rights in other terms used herein.*

Belden Deutschland GmbH • Im Gewerbepark 2 • 58579 Schalksmühle

**Affected products**

| Material number | Article description           |
|-----------------|-------------------------------|
| 934411002       | GDML 2016 LED 24 GB black     |
| 934411003       | GDML 2016 LED 24 GB grey      |
| 932501003       | GDML 2011 LED 24 GB grey      |
| 932501002       | GDML 2011 LED 24 GB black     |
| 934412002       | GDML 2016 LED 24 black        |
| 934412003       | GDML 2016 LED 24 grey         |
| 934413002       | GDML 2016 LED 24 YE black     |
| 934423002       | GDML 2016 LED 120 YE black    |
| 934423003       | GDML 2016 LED 120 YE grey     |
| 934425002       | GDML 2016 LED 230 YE black    |
| 934425003       | GDML 2016 LED 230 YE grey     |
| 932332003       | GDML 2011 LED 24 grey         |
| 932332002       | GDML 2011 LED 24 black        |
| 932527002       | GDML 2011 LED 24 YE black     |
| 932527003       | GDML 2011 LED 24 YE grey      |
| 933738212       | GDML 2011 LED 120 YE black    |
| 933738712       | GDML 2011 LED 120 YE grey     |
| 933739212       | GDML 2011 LED 230 YE black    |
| 933739712       | GDML 2011 LED 230 YE grey     |
| 934418002       | GDML 2016 LED 24 VR black     |
| 934417002       | GDML 2016 LED 24 VR YE black  |
| 934417003       | GDML 2016 LED 24 VR YE grey   |
| 934420002       | GDML 2016 LED 48 VR black     |
| 934421002       | GDML 2016 LED 48 VR YE black  |
| 934424002       | GDML 2016 LED 120 VR YE black |
| 934424003       | GDML 2016 LED 120 VR YE grey  |
| 934426002       | GDML 2016 LED 230 VR YE black |
| 934426003       | GDML 2016 LED 230 VR YE grey  |
| 932521002       | GDML 2011 LED 24 VR black     |
| 933737212       | GDML 2011 LED 24 VR YE black  |
| 933737712       | GDML 2011 LED 24 VR YE grey   |
| 933924212       | GDML 2011 LED 48 VR black     |
| 933924712       | GDML 2011 LED 48 VR grey      |
| 933926212       | GDML 2011 LED 48 VR YE black  |
| 933916212       | GDML 2011 LED 230 VR YE black |
| 933916712       | GDML 2011 LED 230 VR YE grey  |

Belden Deutschland GmbH • Im Gewerbepark 2 • 58579 Schalksmühle

28.06.2018

Dear Valued Customer,

this letter serves as your formal notification that Belden is discontinuing selected Hirschmann valve connectors type A. For each discontinued article we'd like to offer you two alternative products: An alternative out of our second generation GDM valve connectors (2G), as well as an alternative out of our newest, third generation which corresponds to the discontinued product regarding functionality and compatibility however profits from an improved housing design. Please read the attached [product flyer](#) for more information regarding our third generation of GDM valve connectors type A.

### End-of-Life (EOL) Products

| End-of-Life Product (EOL)                       | Description EOL-Product  | 2G Alternative                                  | Description 2G Alternative   | 3G Alternative                        | Description 3G Alternative   |
|---|--|---|--|---------------------------------------|--|
| <b>GDML 2016 LED 24 GB black</b><br># 934411002 | Valve connector type A with red LED and varistor, black M16 cable gland  | <b>GDML 2016 LED 24 VR black</b><br># 934418002 | Valve connector type A with red LED and varistor, black M16 cable gland  | <b>GDM21F6-V24-10D</b><br># 934888034 | Valve connector type A with yellow LED and varistor, black M16 cable gland                       |
| <b>GDML 2016 LED 24 GB grey</b><br># 934411003  | Valve connector type A with red LED and varistor, grey M16 cable gland   | <b>GDML 2016 LED 24 VR black</b><br># 934418002 | Valve connector type A with red LED and varistor, black M16 cable gland  | <b>GDM21F6-V24-10D</b><br># 934888034 | Valve connector type A with yellow LED and varistor, black M16 cable gland, please ask for grey  |
| <b>GDML 2011 LED 24 GB black</b><br># 932501002 | Valve connector type A with red LED and varistor, black PG11 cable gland | <b>GDML 2011 LED 24 VR black</b><br># 932521002 | Valve connector type A with red LED and varistor, black PG11 cable gland | <b>GDM21FB-V24-10D</b><br># 934888148 | Valve connector type A with yellow LED and varistor, black PG11 cable gland                      |
| <b>GDML 2011 LED 24 GB grey</b><br># 932501003  | Valve connector type A with red LED and varistor, grey PG11 cable gland  | <b>GDML 2011 LED 24 VR black</b><br># 932521002 | Valve connector type A with red LED and varistor, black PG11 cable gland | <b>GDM21FB-V24-10D</b><br># 934888148 | Valve connector type A with yellow LED and varistor, black PG11 cable gland, please ask for grey |

The standard warranty terms will be honored for all units shipped to date. For more information on Belden's Long Term Product Support Policy for Industrial Networking products, please visit <https://www.belden.com/resources/technical-resources?type=long-term-product-support>. Special contracts in place and active prior to the announcement date will be honored according to the terms of that contract, with regard to product availability, warranty, or support terms.

Belden Deutschland GmbH • Im Gewerbepark 2 • 58579 Schalksmühle

## Discontinuation – Timeline

| Milestones                        | Date               |
|-----------------------------------|--------------------|
| Discontinuation Announcement Date | June 28, 2018      |
| Last Order Date                   | September 28, 2018 |
| Last Shipment Date                | November 30, 2018  |

If you have any questions or for assistance selecting alternative products, please contact your local Belden sales representative ([North America contact information and International contact information](#)).

Sincerely,

Belden Deutschland GmbH



i.V. Joachim Kiera  
Belden Deutschland GmbH  
Senior Manager Product Management



i.A. Nina Baur  
Belden Deutschland GmbH  
Junior Product Manager

*Belden, Belden Sending All The Right Signals, Hirschmann, GarretCom, Tofino Security, Lumberg Automation and the Belden logo are trademarks or registered trademarks of Belden Inc. or its affiliated companies in the United States and other jurisdictions. Belden and other parties may also have trademark rights in other terms used herein.*