



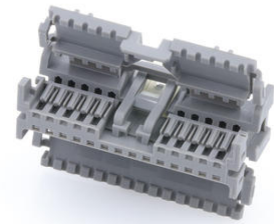
**Part Number :** [348242246](#)

**Product Description :** PROPOSED REPLACEMENT:  
MINI50 GEN II UNSEALED RECEPTACLES (206523  
SERIES); Mini50 Unsealed Receptacle, Dual Row,  
Bridged, with CPA, 24 Circuits, EcoPaXX Resin,  
Polarization Option C, Dark Gray

**Series Number :** 34824

**Status :** Not Recommended For New Design

**Product Category :** Connector Housings



---

## Documents & Resources

### Drawings

[348242246\\_sd.pdf](#)

[PK-31301-538-001.pdf](#)

### 3D Models and Design Files

[STEP AP242](#)

[SOLIDWORKS](#)

[Creo](#)

### Specifications

[AS-34791-020-CH-001.pdf](#)

[AS-34791-020-001.pdf](#)

[AS-34791-020-CH-001.pdf](#)

[AS-34791-020-FR-001.pdf](#)


[PS-34791-020-001.pdf](#)

[347910020-TS-000.pdf](#)

---

## Product Environment Compliance

### Compliance

GADSL/IMDS	Compliant
China RoHS	 per SJ/T 11365-2006
EU ELV	Compliant per 2000/53/EC
Low-Halogen Status	Low-Halogen per IEC 61249-2-21

REACH SVHC	Not Contained per D(2024)6225-DC (07 Nov 2024)
EU RoHS	Compliant per EU 2015/863

Compliance Statements

- EU RoHS
- REACH SVHC
- Low-Halogen

Industry Documents

- IPC 1752A Class C
- IPC 1752A Class D
- Molex Product Compliance Declaration
- IEC-62474
- chemSHERPA (xml)

Substances of Interest

- PFAS

EU RoHS Certificate of Compliance

Additional Product Compliance Information

---

**Part Details**

**General**

Status	Not Recommended For New Design
Category	Connector Housings
Series	34824
Description	PROPOSED REPLACEMENT: MINI50 GEN II UNSEALED RECEPTACLES (206523 SERIES); Mini50 Unsealed Receptacle, Dual Row, Bridged, with CPA, 24 Circuits, EcoPaXX Resin, Polarization Option C, Dark Gray
Application	Automotive, Power, Wire-to-Board
Product Name	Mini50
UPC	191128232647

**Physical**

Circuits (maximum)	24
Color - Resin	Gray (Dark)
Gender	Receptacle

Glow-Wire Capable	No
Keying to Mating Part	Yes
Lock to Mating Part	Yes
Material - Resin	Nylon
Net Weight	4.303/g
Number of Rows	2
Packaging Type	Bag
Panel Mount	No
Pitch - Mating Interface	2.00mm
Pitch - Termination Interface	2.00mm
Polarization	C
Polarized to Mating Part	Yes
Stackable	No
Temperature Range - Operating	-40° to +105°C

---

## Mates With / Use With

### Mates with Part(s)

Description	Part Number
Mini50 Unsealed Dual Row Vertical Headers	<u><a href="#">34825</a></u>
Mini50 Unsealed Dual Row Right-Angle Headers	<u><a href="#">34826</a></u>
Mini50 Unsealed Dual Row Right-Angle Headers	<u><a href="#">34897</a></u>

### Use with Part(s)

Description	Part Number
CTX50 Unsealed Receptacle Terminals	<u><a href="#">560023</a></u>