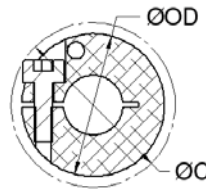
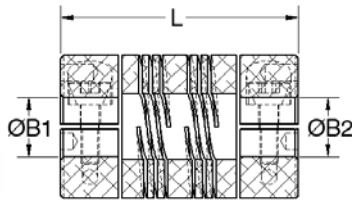
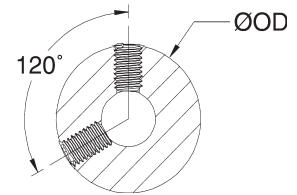
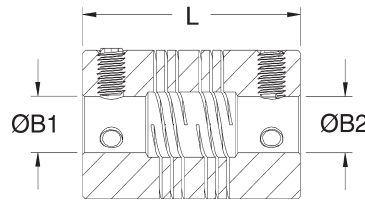


FCR



FSR



| PART NUMBER | | SPECIFICATIONS | | | | | | | PERFORMANCE | | | | |
|-------------|-----------------|-------------------|---------------------|---------------------------------|---------------|-----------------|-----------------|------------------------|-----------------------|---------------------------------|----------------------------|-------------------|---|
| CLAMP STYLE | SET SCREW STYLE | BORES B1, B2 (in) | OUTER DIAM. OD (in) | CLEARANCE DIAM C (in) (FCR) MAX | LENGTH L (in) | CAP SCREW (FCR) | SET SCREW (FSR) | SHAFT PENETRATION (in) | STATIC TORQUE (lb-in) | TORSIONAL STIFFNESS (Deg/lb-in) | MISALIGNMENT PARALLEL (in) | AXIAL MOTION (in) | MOMENT OF INERTIA (lb-in ²) |
| FCR10 | FSR10 | 3 (.1875) | 0.625 | 0.796 | 1.000 | M2.5 | M4 | 0.472 | 13 | 0.360 | 0.008 | 0.005 | 0.0013 |
| | | 4 (.2500) | | | | | | | 13 | 0.360 | | | |
| FCR12 | FSR12 | 3 (.1875) | 0.750 | 0.879 | 1.250 | M3 | M4 | 0.593 | 26 | 0.152 | 0.008 | 0.005 | 0.0036 |
| | | 4 (.2500) | | | | | | | 26 | 0.152 | | | |
| | | 5 (.3125) | | | | | | | 20 | 0.229 | | | |
| | | 4 (.2500) | | | | | | | 35 | 0.064 | | | |
| FCR16 | FSR16 | 5 (.3125) | 1.000 | 1.117 | 1.500 | M4 | M5 | 0.704 | 33 | 0.093 | 0.015 | 0.010 | 0.0139 |
| | | 6 (.3750) | | | | | | | 33 | 0.093 | | | |
| | | 5 (.3125) | | | | | | | 70 | 0.038 | | | |
| FCR20 | FSR20 | 6 (.3750) | 1.250 | 1.459 | 1.750 | M5 | M6 | 0.820 | 61 | 0.048 | 0.015 | 0.010 | 0.0401 |
| | | 8 (.5000) | | | | | | | 50 | 0.072 | | | |
| | | 6 (.3750) | | | | | | | 120 | 0.022 | | | |
| FCR24 | FSR24 | 8 (.5000) | 1.500 | 1.642 | 2.250 | M5 | M6 | 1.042 | 110 | 0.029 | 0.030 | 0.015 | 0.1023 |
| | | 10 (.6250) | | | | | | | 95 | 0.043 | | | |
| | | 12 (.7500) | | | | | | | 80 | 0.063 | | | |

- Note 1** Static torque ratings are at maximum misalignment. To obtain dynamic rating, static ratings should be divided by 2 for non-reversing applications and by 4 for reversing applications.
- Note 2** Hardware is alloy steel with black oxide finish. Stainless steel hardware is available upon request. FCR series parts have two socket head Nypatch® cap screws on each end with the exception of the M2.5.
- Note 3** Performance ratings are for guidance only. The user must determine suitability for a particular application.
- Note 4** Coupling torque and torsional stiffness are determined by the largest bore selected.
- Note 5** Angular misalignment on all couplings is 3°.
- Note 6** Shafts may penetrate up to 0.5 x L. Be certain shafts do not touch.
- Note 7** Maximum speed 6,000 RPM.

FOR ENGINEERING AND WARRANTY INFORMATION SEE WWW.RULAND.COM