



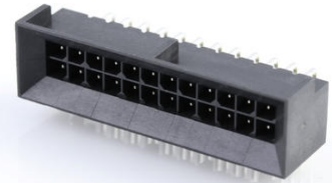
Part Number : [444282401](#)

Product Description : Micro-Fit BMI Header, Surface Mount Compatible, Dual Row, Right-Angle, with Snap-in Plastic Peg PCB Lock, 24 Circuits, Tin (Sn) Plating

Series Number : 44428

Status : Active

Product Category : PCB Headers and Receptacles



Documents & Resources

Drawings

[444282401_sd.pdf](#)

[PK-44428-001-001.pdf](#)

3D Models and Design Files

[444282401_stp.zip](#)

[SYM-44428-2401-001.zip](#)

[SYM-44428-2401_3-001.zip](#)

Specifications


[PS-44300-001-001.pdf](#)

[443000002-TS-000.pdf](#)

[444280001-TS-000.pdf](#)

Product Environment Compliance

Compliance

| | |
|--------------------|-----------------------------------------------------------------------------------------------------------|
| GADSL/IMDS | Not Relevant |
| China RoHS | per SJ/T 11365-2006  |
| EU ELV | Not Relevant |
| Low-Halogen Status | Not Low-Halogen per IEC 61249-2-21 |
| REACH SVHC | Not Contained per D(2024)7663-DC (21 Jan 2025) |
| EU RoHS | Compliant per EU 2015/863 |

Compliance Statements

- EU RoHS
- REACH SVHC
- Low-Halogen

Industry Documents

- IPC 1752A Class C
- IPC 1752A Class D
- Molex Product Compliance Declaration
- IEC-62474
- chemSHERPA (xml)

Substances of Interest

- PFAS

EU RoHS Certificate of Compliance

Additional Product Compliance Information

Part Details

General

| | |
|----------------|-----------------------------------------------------------------------------------------------------------------------------------------|
| Status | Active |
| Category | PCB Headers and Receptacles |
| Series | 44428 |
| Description | Micro-Fit BMI Header, Surface Mount Compatible, Dual Row, Right-Angle, with Snap-in Plastic Peg PCB Lock, 24 Circuits, Tin (Sn) Plating |
| Application | Board-to-Board, Power, Wire-to-Board |
| Comments | High Temperature, Square Pin, Solder Type, Polarized to Mating Part |
| Component Type | PCB Header |
| Product Name | Micro-Fit BMI |
| UPC | 800756081847 |

Agency

| | |
|-----|---------|
| CSA | LR19980 |
| UL | E29179 |

Electrical

| | |
|-------------------------------|------|
| Current - Maximum per Contact | 8.5A |
| Voltage - Maximum | 600V |

Physical

| | |
|--------------------------------|----------------|
| Breakaway | No |
| Circuits (Loaded) | 24 |
| Circuits (maximum) | 24 |
| Color - Resin | Black |
| Durability (mating cycles max) | 30 |
| First Mate / Last Break | No |
| Flammability | 94V-0 |
| Glow-Wire Capable | No |
| Guide to Mating Part | No |
| Keying to Mating Part | None |
| Lock to Mating Part | Yes |
| Material - Metal | Brass |
| Material - Plating Mating | Tin |
| Material - Plating Termination | Tin |
| Material - Resin | Nylon |
| Net Weight | 4.736/g |
| Number of Rows | 2 |
| Orientation | Right Angle |
| Packaging Type | Tray |
| PCB Locator | Yes |
| PCB Retention | Yes |
| PCB Thickness - Recommended | 1.60mm |
| PC Tail Length | 3.50mm |
| Pitch - Mating Interface | 3.00mm |
| Plating min - Mating | 5.080µm |
| Plating min - Termination | 5.080µm |
| Polarized to PCB | Yes |
| Shrouded | Fully |
| Stackable | No |
| Temperature Range - Operating | -40° to +105°C |
| Termination Interface Style | Through Hole |

Solder Process Data

| | |
|------------------------------|------|
| Max-Duration | 5 |
| Lead-Free Process Capability | WAVE |
| Max-Cycle | 1 |
| Max-Temp | 260 |

Mates With / Use With

Mates with Part(s)

| Description | Part Number |
|----------------------------------------------------|--------------|
| Micro-Fit BMI Dual Row Receptacle Housings | <u>44133</u> |
| Micro-Fit BMI Right-Angle Dual Row PCB Receptacles | <u>44764</u> |
| Micro-Fit BMI Vertical Dual Row PCB Receptacles | <u>44769</u> |

This document was generated on Jul 09, 2025