



# Xitanium LED Driver Indoor Dimmable

## Xitanium LED Driver 10W/0.70A-14V DIM

LED driver indoor 10W dimmable is a dedicated driver to deliver power to 3 pcs of 700mA LEDs in series, suitable for nominal 220V to 240V, 50Hz and 60Hz mains supply. The driver is to be mounted inside or outside luminaires for indoor use and class II applications. The output must be connected to the 3 LEDs in series LED driver indoor 30W dim is a dedicated driver to deliver power to 6 ~ 12 pcs of 700mA LEDs in series, suitable for nominal 220V to 240V, 50Hz and 60Hz mains supply. The driver is to be mounted inside luminaires for indoor use and class II applications. The output must be connected to the 6 ~ 12 LEDs in series Both drivers convert AC mains to constant current output by an AC/DC transition. Users can connect a trailing edge dimmer at the input side to dim the LEDs' light output

## Product data

### • Product Data

Order code	064161 30
Full product code	871016306416130
Full product name	Xitanium LED Driver 10W/ 0.70A-14V DIM
Order product name	Xitanium LED Driver 10W/ 0.70A-14V DIM
Pieces per pack	1
Packing configuration	36
Packs per outerbox	36
Bar code on pack - EAN1	8710163064161
Bar code on outerbox - EAN3	8710163064178
Logistic code(s) - 12NC	913710053666
Net weight per piece	0.075 kg

### • General Characteristics

Housing	L120x45x20
Input Frequency	50/60 Hz
IP Classification	20
Number of LEDs	3 x

### • Operating Characteristics

Efficiency Range	70 %
Output Power Range	0-10 W
Power Factor (100% load)	0.95 -
Input Power max	0-13 W
Output Voltage Range	14 V

Output Current Range (mA)	700
Dimming range	100-25 %
Dimmable	Yes
Input Current max	60 mA

### • Wiring Characteristics

Connector type input terminal	Insert
Connector type output terminal	Insert

### • Temperature Characteristics

T-case maximum	80 C
T-Storage	-40 (min), 85 (max) C
Operating Temperature	-20 (min), 50 (max) C

### • Approval&Application Char's

CE marking	Yes
------------	-----

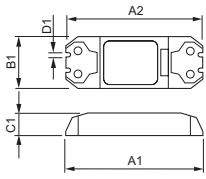
### • Product Dimensions

Length A1	120 mm
Width B1	45 mm
Height C1	20 mm
Fixing Hole Diameter D1	3.5 mm
Fixing Hole Distance	114.5 mm
Length A2	

# PHILIPS

sense and simplicity

## Dimensional drawing



Product	A1 (Norm)	A2 (Norm)	B1 (Norm)	B2 (Norm)	C1 (Norm)	D1 (Norm)
LED Driver 10W/0.70A-14V DIM	120	114.5	45	-	20	3.5



© 2011 Koninklijke Philips Electronics N.V.  
All rights reserved.

Specifications are subject to change without notice. Trademarks are the property of Koninklijke Philips Electronics N.V. or their respective owners.

[www.philips.com/lighting](http://www.philips.com/lighting)

2011, January 11  
data subject to change