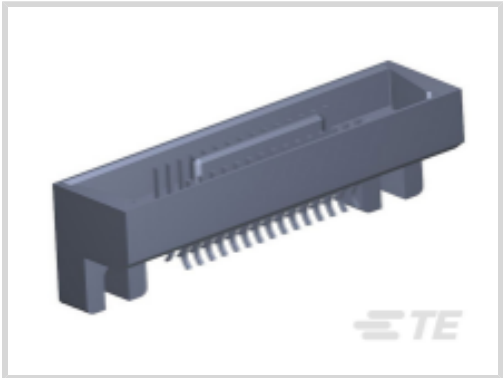


TE Internal #: 1-531803-8  
PCB Mount Header, Right Angle, Board-to-Board, 80 Position, 1.27 mm [.05 in] Centerline, Fully Shrouded, Gold (Au), Power & Signal, Gray, Package

[View on TE.com >](#)



Connectors > PCB Connectors > PCB Headers & Receptacles



PCB Connector Type: **PCB Mount Header**  
PCB Mount Orientation: **Right Angle**  
Connector System: **Board-to-Board**  
Number of Positions: **80**  
Number of Rows: **2**

Features

Product Type Features

PCB Connector Type	PCB Mount Header
Connector System	Board-to-Board
Header Type	Fully Shrouded
Sealable	No
Connector & Contact Terminates To	Printed Circuit Board
Connector Product Type	Connector Assembly

Configuration Features

Stackable	No
PCB Mount Orientation	Right Angle
Number of Positions	80
Number of Rows	2

Electrical Characteristics

Dielectric Withstanding Voltage (Max)	600 VAC
---------------------------------------	---------

Body Features

Primary Product Color	Gray
-----------------------	------

Contact Features

Contact Mating Area Plating Material Thickness	1.27 µm[50 µin]
--	-----------------



Mating Tab Width	.43 mm[.017 in]
Contact Base Material	Brass
Mating Tab Thickness	.45 mm[.018 in]
PCB Contact Termination Area Plating Material	Tin-Lead
Contact Mating Area Plating Material	Gold (Au)
Contact Type	Pin
Contact Current Rating (Max)	1.5 A

Termination Features

Rectangular Termination Post & Tail Width	.46 mm[.018 in]
Rectangular Termination Post & Tail Thickness	.23 mm[.009 in]
Termination Post & Tail Length	3.81 mm[.15 in]

Mechanical Attachment

PCB Mount Retention Type	Mounting Ears
Mating Alignment Type	Keyed
PCB Mount Retention	With
PCB Mount Alignment	With
Connector Mounting Type	Board Mount
Mating Alignment	With

Housing Features

Housing Material	LCP (Liquid Crystal Polymer)
Centerline (Pitch)	1.27 mm[.05 in]

Dimensions

Row-to-Row Spacing	3.81 mm[.15 in]
Stack Height	15.24 mm[.6 in]
PCB Thickness (Recommended)	.05 – .07 mm[.054 – .07 in]
Connector Height	13.2 mm[.52 in]

Usage Conditions

Operating Temperature Range	-65 – 125 °C[-85 – 257 °F]
-----------------------------	----------------------------

Operation/Application

Assembly Process Feature	None
Circuit Application	Power & Signal

Industry Standards

--	--



UL Flammability Rating	UL 94V-0
------------------------	----------

Packaging Features

Packaging Quantity	1
Packaging Method	Package

Product Compliance

For compliance documentation, visit the product page on [TE.com](#)>

EU RoHS Directive 2011/65/EU	Not Compliant
EU ELV Directive 2000/53/EC	Compliant with Exemptions
China RoHS 2 Directive MIIT Order No 32, 2016	Restricted Materials Above Threshold
EU REACH Regulation (EC) No. 1907/2006	Current ECHA Candidate List: JAN 2025 (247) Candidate List Declared Against: JUNE 2023 (235) SVHC > Threshold: Pb (4% in Plating) <b>Article Safe Usage Statements:</b> Do not eat, drink or smoke when using this product. Wash thoroughly after handling. Recycle if possible and dispose of the article by following all applicable governmental regulations relevant to your geographic location.
Halogen Content	Not Yet Reviewed for halogen content
Solder Process Capability	Reflow solder capable to 245°C

Product Compliance Disclaimer

This information is provided based on reasonable inquiry of our suppliers and represents our current actual knowledge based on the information they provided. This information is subject to change. The part numbers that TE has identified as EU RoHS compliant have a maximum concentration of 0.1% by weight in homogenous materials for lead, hexavalent chromium, mercury, PBB, PBDE, DBP, BBP, DEHP, DIBP, and 0.01% for cadmium, or qualify for an exemption to these limits as defined in the Annexes of Directive 2011/65/EU (RoHS2). Finished electrical and electronic equipment products will be CE marked as required by Directive 2011/65/EU. Components may not be CE marked. Additionally, the part numbers that TE has identified as EU ELV compliant have a maximum concentration of 0.1% by weight in homogenous materials for lead, hexavalent chromium, and mercury, and 0.01% for cadmium, or qualify for an exemption to these limits as defined in the Annexes of Directive 2000/53/EC (ELV). Regarding the REACH Regulation, the information TE provides on SVHC in articles for this part number is based on the latest European Chemicals Agency (ECHA) ‘Guidance on requirements for substances in articles’ posted at this URL: <https://echa.europa.eu/guidance-documents/guidance-on-reach>

Customers Also Bought



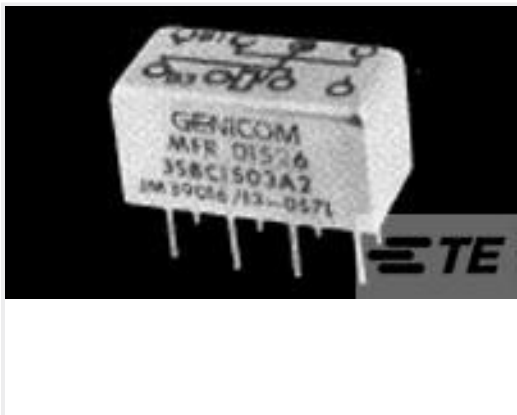
TE Part #1617122-3  
JMACD-12XP = M39016/15-079P



TE Part #1462051-2  
HF3 53 = 50OHM 140MW 5V MONO




TE Part #530745-9  
MINI-BOX RCPT ASSY 100P UNSEAL



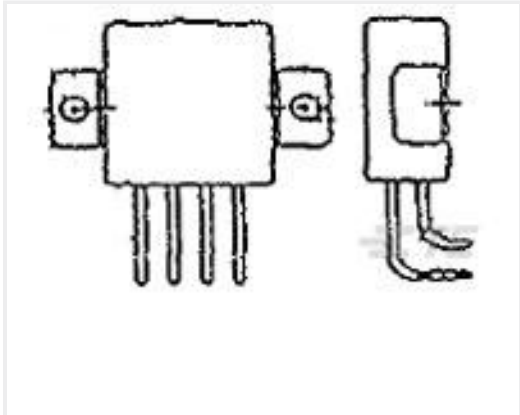
TE Part #3-1617072-6  
3SBC1538A2 = M39016/13-073L



TE Part #1-1617110-9  
JMGST-5MW = M28776/7-007M



TE Part #2-87195-5  
MOD IV RECP LP




TE Part #1617749-3  
FCA-210-0927M=M83536/9-027M



TE Part #5-1616970-9  
K200A1C=CONTACTOR 200 AMP SPST 28 VDC



TE Part #207684-1  
AMPLIMITE,SKT CONT,SZ 22



TE Part #640923-2  
RECEPT,PIDG, FASTON, .110 SERIES, 22-18

Documents

Product Drawings

MINI BX PIN HDR 80 POS

English

CAD Files

3D PDF

3D

Customer View Model

ENG\_CVM\_CVM\_1-531803-8\_R.2d\_dxf.zip

English

Customer View Model

ENG\_CVM\_CVM\_1-531803-8\_R.3d\_igs.zip

English

Customer View Model

ENG\_CVM\_CVM\_1-531803-8\_R.3d\_stp.zip

English

By downloading the CAD file I accept and agree to the [Terms and Conditions](#) of use.