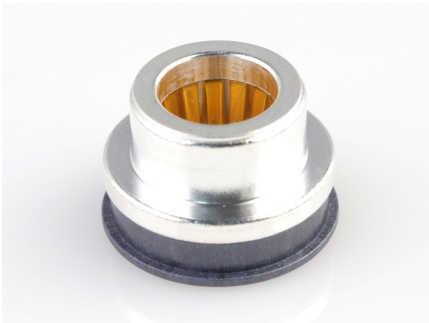




Part Number : [2121940001](#)
Product Description : Centrality 8.00mm Top-entry, Surface Mount Socket Assembly, Tape and Reel
Series Number : 212194
Status : Active
Product Category : PCB Headers and Receptacles



Documents & Resources


Drawings
[2121940001_sd.pdf](#)
[2043180000-PK-000.pdf](#)

3D Models and Design Files
[2121940001_stp.zip](#)

Specifications
[2043130001-PS-000.pdf](#)
[2043130008-TS-000.pdf](#)
[2043131234-TS-000.pdf](#)

Product Environment Compliance

Compliance

GADSL/IMDS	Not Relevant
China RoHS	
EU ELV	Not Relevant
Low-Halogen Status	Low-Halogen per IEC 61249-2-21
REACH SVHC	Not Contained per D(2024)6225-DC (07 Nov 2024)
EU RoHS	Compliant per EU 2015/863

Multiple Part Product Compliance Statements

- Eu RoHS
- REACH SVHC
- Low-Halogen

Multiple Part Industry Compliance Documents

- IPC 1752A Class C
- IPC 1752A Class D
- Molex Product Compliance Declaration
- IEC-62474
- chemSHERPA (xml)

EU RoHS Certificate of Compliance

Part Details

General

Status	Active
Category	PCB Headers and Receptacles
Series	212194
Description	Sentrality 8.00mm Top-entry, Surface Mount Socket Assembly, Tape and Reel
Application	Board-to-Board, Busbar-to-Board, Busbar-to-Busbar, Power
Comments	Current and voltage performances are dependent upon application variables.
Component Type	PCB Receptacle
Product Name	Sentrality
UPC	191130978687

Electrical

Current - Maximum per Contact	200.0A
Voltage - Maximum	600V

Physical

Breakaway	No
Circuits (Loaded)	1
Circuits (maximum)	1
Diameter	8.00mm
Durability (mating cycles max)	200
Glow-Wire Capable	No
Guide to Mating Part	No
Height Above Board	4.60mm

Material - Metal	Copper Alloy
Material - Plating Mating	Gold
Material - Plating Termination	Silver
Mating Orientation	Top-entry
Net Weight	6.896/g
Number of Rows	1
Orientation	Vertical
Packaging Type	Embossed Tape on Reel
PCB Retention	None
Pitch - Mating Interface	N/A
Polarized to Mating Part	No
Polarized to PCB	No
Temperature Range - Operating	-40° to +125°C
Termination Interface Style	Surface Mount

Solder Process Data

Max-Duration	600
Lead-Free Process Capability	SMC&WAVE
Max-Cycle	2
Max-Temp	205

Mates With / Use With

Mates with Part(s)

Description	Part Number
Sentrality Pins	<u>203263</u>