



Part Number : [936010203](#)

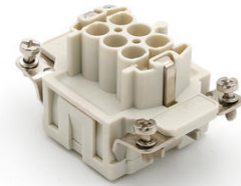
Product Description : Heavy-Duty Spring Terminal Insert, Female, 6-Pole, 16A, Silver (Ag) Plated Contacts, Size 6B «44x27»

Series Number : 93601

Status : Active

Product Category : Heavy-Duty Connectors

Engineering Number : 7306.5851.0



Documents & Resources

Product Environment Compliance

Compliance

GADSL/IMDS	Not Relevant
China RoHS	per SJ/T 11365-2006
EU ELV	Not Relevant
Low-Halogen Status	Low-Halogen per IEC 61249-2-21
REACH SVHC	Contains Lead per D(2025)4165-DC (25 June 2025)
EU RoHS	Compliant with Exemption 6(c) per EU 2015/863

Compliance Statements

- EU RoHS
- REACH SVHC
- Low-Halogen

Industry Documents

- IPC 1752A Class C
- IPC 1752A Class D
- Molex Product Compliance Declaration
- IEC-62474
- chemSHERPA (xml)

Substances of Interest

- PFAS

[EU RoHS Certificate of Compliance](#)

[Additional Product Compliance Information](#)

[UKCA - Declaration of Conformity](#)

[CE - Declaration of Conformity](#)

Part Details

General

Status	Active
Category	Heavy Duty Connectors
Series	93601
Description	Heavy-Duty Spring Terminal Insert, Female, 6-Pole, 16A, Silver (Ag) Plated Contacts, Size 6B «44x27»
Component Type	Inserts - Spring Terminal
Insert Series	S-ES
Product Name	Heavy-Duty Connectors
Standard	CSA C22.2 NO. 182.3, EN 60664-1, EN 61984, UL 1977
UPC	887191876610

Agency

CSA	256883
UL	E249674

Electrical

Current - Maximum per Contact	16.0A
Voltage - Maximum	500V

Physical

Component Size	6B «44x27»
Durability (mating cycles max)	500
Gender	Female
Insert Color	Grey
Material - Contact	Copper Alloy
Material - Insert	Polycarbonate
Material - Plating	Silver

Net Weight	52.200/g
Number of Rows	2
Packaging Type	Bag
Polarized to Mating Part	Yes
Poles	6
Stripping Length	9.00-11.00mm
Temperature Range - Operating	-40° to +125°C
Wire Size (AWG)	14-26
Wire Size mm ²	0.14-2.50

Mates With / Use With

Mates with Part(s)

Description	Part Number
Heavy-Duty Spring Terminal Insert, Male, 6-Pole, 16A, Silver (Ag) Plated Contacts, Size 6B «44x27»	<u>936010205</u>

Use with Part(s)

Description	Part Number
Use With	Size 6B «44x27» Hoods and Housings