

Circuit Board Support on Adhesive Base

CBSB/CBSBT/LCBSB/LCBSBM

Natural Nylon 6/6 RMS-01

- Adhesive Backing: RMS-24, double sided adhesive tape with release tab

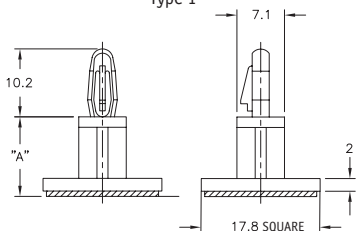


Part Number				"A" Standoff Height	Std Pack Qty
LCBSB (Type 1)	CBSB (Type 2)	LCBSBM (Type 3)	CBSBT (Type 4)	4.8	1000
LCBSB-3-01A2-RT	CBSB-3-01A2-RT	LCBSBM-3-01A2	CBSBT-3-01A2-RT	6.4	1000
LCBSB-4-01A2-RT	CBSB-4-01A2-RT	LCBSBM-4-01A2	CBSBT-4-01A2-RT	7.9	1000
-	-	LCBSBM-5-01A2	CBSBT-5-01A2-RT	9.5	1000
LCBSB-6-01A2-RT	CBSB-6-01A2-RT	LCBSBM-6-01A2	CBSBT-6-01A2-RT	11.1	1000
-	-	LCBSBM-7-01A2	CBSBT-7-01A2-RT	12.7	1000
LCBSB-8-01A2-RT	CBSB-8-01A2-RT	LCBSBM-8-01A2	CBSBT-8-01A2-RT	14.3	1000
LCBSB-9-01A2-RT	CBSB-9-01A2-RT	LCBSBM-9-01A2	CBSBT-9-01A2-RT	15.9	1000
LCBSB-10-01A2	CBSB-10-01A2-RT	LCBSBM-10-01A2	CBSBT-10-01A2	19.1	1000
LCBSB-12-01A2	CBSB-12-01A2-RT	-	-	22.2	1000
LCBSB-14-01A2	CBSB-14-01A2-RT	-	-	25.4	1000
LCBSB-16-01A2	CBSB-16-01A2-RT	-	-	28.6	1000
LCBSB-18-01A2	CBSB-18-01A2-RT	-	-		

LCBSB

Top Hole: Snap-lock: 4 ± 0.08
Panel Thickness: 1.57

Type 1

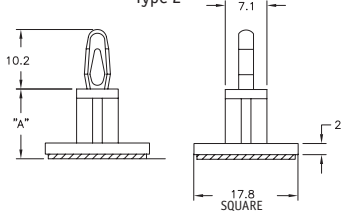


LCBSB (Type 1)	"A" Standoff Height	Std Pack Qty
LCBSB-6M-01A2	6	1000
LCBSB-8M-01A2	8	1000
LCBSB-10M-01A2	10	1000
LCBSB-12M-01A2	12	1000
LCBSB-14M-01A2	14	1000
LCBSB-16M-01A2	16	1000

CBSB

Top Hole: Snap-fit: 4 ± 0.08
Panel Thickness: 1.57

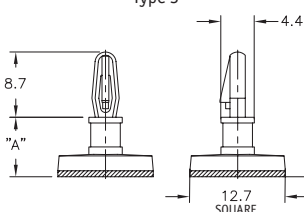
Type 2



LCBSBM

Top Hole: Snap-lock: 3.18 ± 0.05
Panel Thickness: 1.57

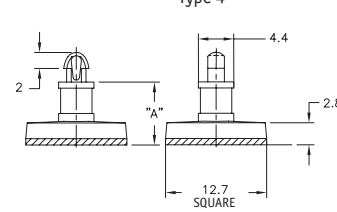
Type 3



CBSBT

Top Hole: Snap-lock: 2.54 ± 0.05
Panel Thickness: 1.63 Max.

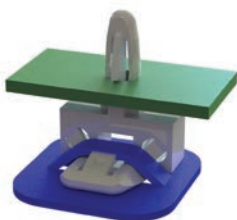
Type 4



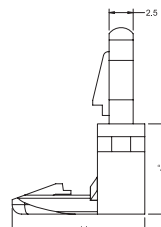
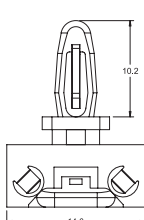
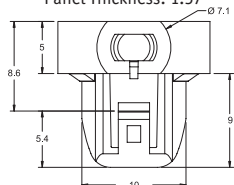
Side Mount Circuit Board Support

SMLCBS

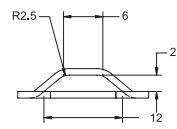
Natural UL94 V-2 Nylon 6/6, RMS-01



Top Hole: Snap-Lock $\varnothing 3.96 \pm 0.08$
Panel Thickness: 1.57



Recommended Mounting Slot



Part Number	"A" Standoff Height	Std Pack Qty
SMLCBS-5-01	7.9	1000
SMLCBS-6-01	9.5	1000
SMLCBS-7-01	11.1	1000
SMLCBS-8-01	12.7	1000