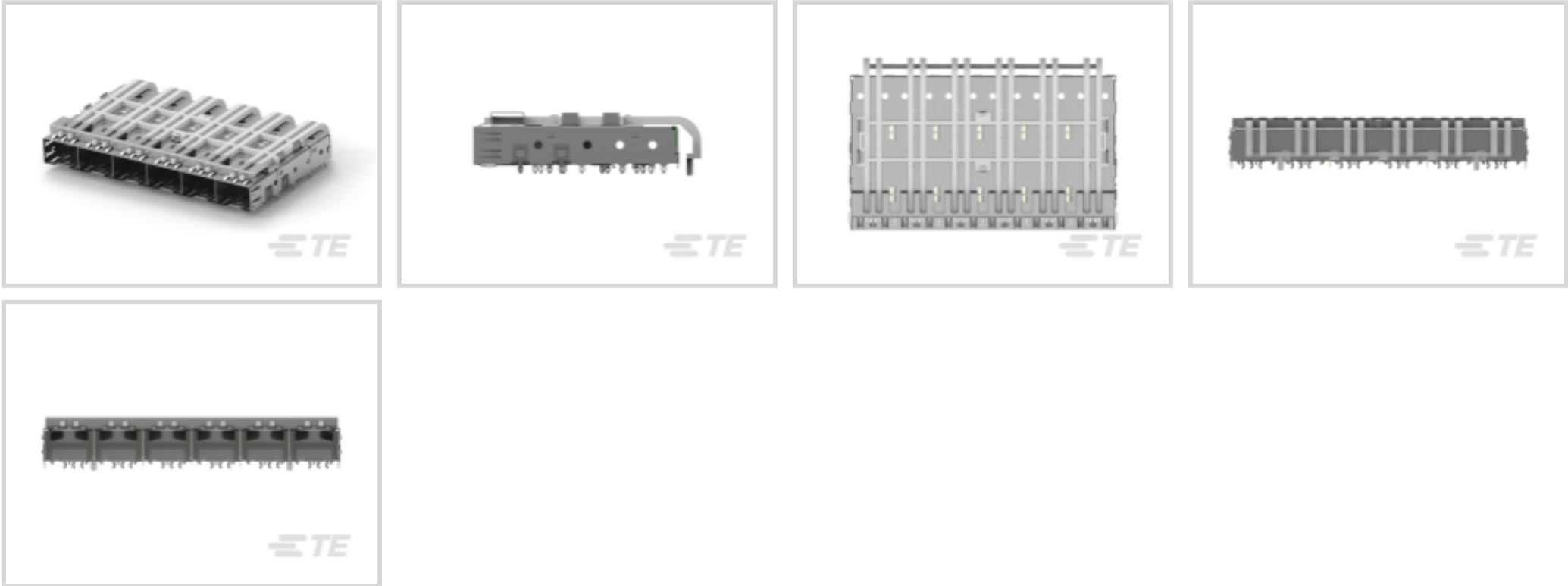




Connectors > Pluggable IO Connectors & Cages



Form Factor: **SFP**

Pluggable I/O Product Type: **Cage Assembly**

Sealable: **No**

Circuit Application: **Signal**

Operating Temperature Range: **-55 – 85 °C [-67 – 185 °F]**

Features

Product Type Features

Cage Type	Ganged
Form Factor	SFP
Pluggable I/O Product Type	Cage Assembly
Sealable	No

Configuration Features

Lightpipe Style	Standard
Number of Ports	6
Port Matrix Configuration	1 x 6

Electrical Characteristics

Data Rate (Max)	16 Gb/s
-----------------	---------

Termination Features

Termination Method to PCB	Through Hole - Press-Fit
---------------------------	--------------------------

Usage Conditions

Operating Temperature Range	-55 – 85 °C[-67 – 185 °F]
-----------------------------	---------------------------



Operation/Application

Pluggable I/O Applications	SFP
Circuit Application	Signal

Other

Included Lightpipe	Yes
EMI Containment Feature Type	Internal/External EMI Springs

Product Compliance

For compliance documentation, visit the product page on TE.com>

EU RoHS Directive 2011/65/EU	Compliant
EU ELV Directive 2000/53/EC	Compliant
China RoHS 2 Directive MIIT Order No 32, 2016	No Restricted Materials Above Threshold
EU REACH Regulation (EC) No. 1907/2006	Current ECHA Candidate List: JAN 2025 (247) Candidate List Declared Against: JAN 2025 (247) Does not contain REACH SVHC
Halogen Content	Not Low Halogen - contains Br or Cl > 900 ppm.
Solder Process Capability	Not applicable for solder process capability

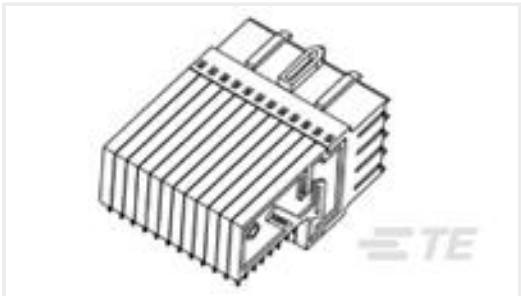
Product Compliance Disclaimer

This information is provided based on reasonable inquiry of our suppliers and represents our current actual knowledge based on the information they provided. This information is subject to change. The part numbers that TE has identified as EU RoHS compliant have a maximum concentration of 0.1% by weight in homogenous materials for lead, hexavalent chromium, mercury, PBB, PBDE, DBP, BBP, DEHP, DIBP, and 0.01% for cadmium, or qualify for an exemption to these limits as defined in the Annexes of Directive 2011/65/EU (RoHS2). Finished electrical and electronic equipment products will be CE marked as required by Directive 2011/65/EU. Components may not be CE marked. Additionally, the part numbers that TE has identified as EU ELV compliant have a maximum concentration of 0.1% by weight in homogenous materials for lead, hexavalent chromium, and mercury, and 0.01% for cadmium, or qualify for an exemption to these limits as defined in the Annexes of Directive 2000/53/EC (ELV). Regarding the REACH Regulation, the information TE provides on SVHC in articles for this part number is based on the latest European Chemicals Agency (ECHA) ‘Guidance on requirements for substances in articles’ posted at this URL: <https://echa.europa.eu/guidance-documents/guidance-on-reach>

Customers Also Bought



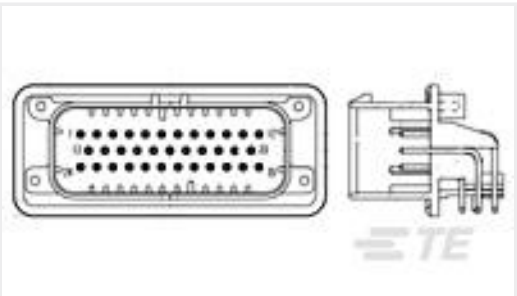
TE Part #1888247-1
20 POS SMT CONN, SFP/SFP+, 30A



TE Part #1982738-1
Female Connector Telcordia



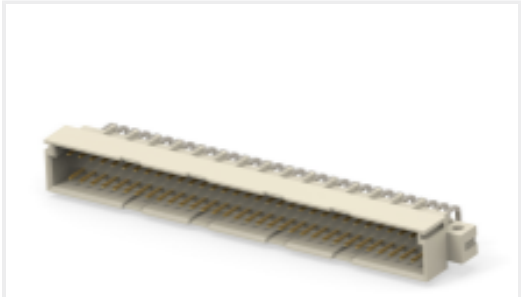
TE Part #2007198-1
SFP+ 1x1 Cage Assembly, Press-



TE Part #776163-1
35POS,PIN DIA 1.3,HDR ASSY,90DEG, COD 1



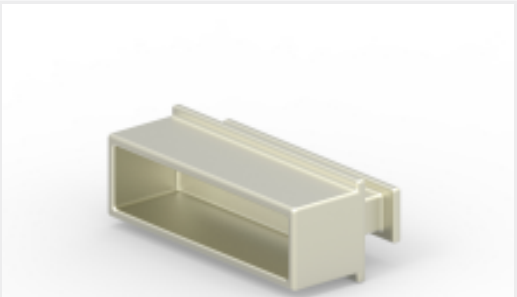
TE Part #2331350-1
DET SW6.3X3.0X8.0 GW VERT. NO AG TB



TE Part #364914-E
STVC 64 M AC VV 4-00 0606 * * 247 E007 1



TE Part #3-1419108-5
RTD34012



TE Part #2288221-1
CFP2 EMI/DUST PLUG



TE Part #1393280-5
V23086C1001A402



TE Part #1483356-1
MICRO-MATCH LEAD 16P 100MM

Documents

Product Drawings

SFP 1X6 CAGE & LIGHT PIPE KIT

English

CAD Files

3D PDF

3D

Customer View Model

ENG_CVM_CVM_1658939-3_A.2d_dxf.zip

English

Customer View Model

ENG_CVM_CVM_1658939-3_A.3d_igs.zip

English

Customer View Model

ENG_CVM_CVM_1658939-3_A.3d_stp.zip

English

By downloading the CAD file I accept and agree to the [Terms and Conditions](#) of use.

Product Specifications



Application Specification

English