



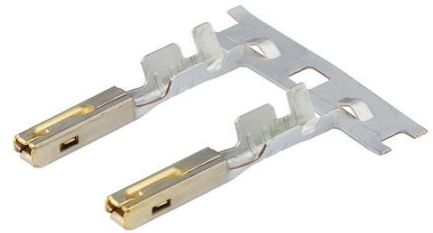
**Part Number :** [330012006](#)

**Product Description :** MX150 Female Terminal for Mat-Sealed Connectors, Gold Plating, Grip Code M3, Preferred Terminal for use in Sealed Application with 0.35-0.50mm<sup>2</sup>, Right Reel Payoff

**Series Number :** 33001

**Status :** Active

**Product Category :** Crimp Terminals



---

## Documents & Resources

### Drawings

[330012006 sd.pdf](#)

[313025040-000.pdf](#)

### Specifications

[AS-33012-002-001.pdf](#)

[AS-33012-002-CH-001.pdf](#)

[AS-33012-002-FR-001.pdf](#)

[PS-33012-002-001.pdf](#)

[TS-33001-002-001.pdf](#)

---

## Product Environment Compliance

### Compliance

GADSL/IMDS	Compliant with Exemption 34; 33
China RoHS	Not Relevant
EU ELV	Compliant per 2000/53/EC
Low-Halogen Status	Not Relevant
REACH SVHC	Not Contained per D(2025)4165-DC (25 June 2025)
EU RoHS	Compliant per EU 2015/863

### Compliance Statements

- EU RoHS
- REACH SVHC

- Low-Halogen

#### Industry Documents

- IPC 1752A Class C
- IPC 1752A Class D
- Molex Product Compliance Declaration
- IEC-62474
- chemSHERPA (xml)

#### Substances of Interest

- PFAS

#### EU RoHS Certificate of Compliance

#### Additional Product Compliance Information

---

## Part Details

### General

Status	Active
Category	Crimp Terminals
Series	33001
Description	MX150 Female Terminal for Mat-Sealed Connectors, Gold Plating, Grip Code M3, Preferred Terminal for use in Sealed Application with 0.35-0.50mm <sup>2</sup> , Right Reel Payoff
Application	Power, Wire-to-Board, Wire-to-Wire, Automotive
Comments	For automatic and semi-automatic crimping, use Left Reel Payoff terminals. See Sales Drawing for Left Reel Payoff Part Numbers.
Product Name	MX150
UPC	884982250833

### Electrical

Current - Maximum per Contact	Contact Molex
Voltage - Maximum	14V DC

### Physical

Gender	Female
Grip Code	M3

Material - Metal	High Performance Alloy (HPA)
Material - Plating Mating	Gold
Material - Plating Termination	Tin
Net Weight	0.435/g
Packaging Type	Reel
Plating min - Mating	0.762µm
Plating min - Termination	2.540µm
Termination Interface Style	Crimp or Compression
Wire Insulation Diameter	1.70mm max.
Wire Size (AWG)	N/A
Wire Size mm <sup>2</sup>	0.35-0.50

## Mates With / Use With

### Use with Part(s)

Description	Part Number
MX150 Mat-Sealed Dual Row Female Connector Assemblies	<u>33472</u>
MX150 Mat-Sealed Single Row Female Connector Assemblies	<u>33471</u>

---

## Application Tooling

### Global

Description	Part Number
Extraction Toolkit for MX150 Connectors	<u>2002220700</u>
Extraction Tool for MX150L, MX150, PT Bulb Socket, iGrid, SPOX, and Wire-to-Motor Terminals	<u>638131500</u>
Hand Crimp Tool for ISO (M3) Receptacle Terminals	<u>638233700</u>