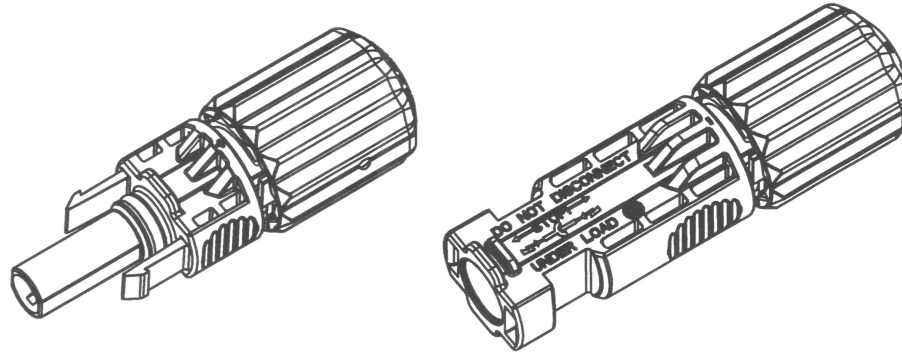


CUSTOMER DRAWING



REVISION		
LTR	DESCRIPTION	DATE
A	INITIAL RELEASE	2022-10-14
B	UPDATE THE HW PN	2023-10-19

Max
Chris

- IT IS FORBIDDEN TO MATING WITH OTHER BRAND CONNECTOR.
- THE RATED CURRENT IS ONLY FOR LABORATORY TEST, SUGGEST CUSTOMER USING DOUBLE 1.25 SAFTY FACTOR FOR FILELD USING.
- PLEASE BE AWARE THAT THE 3rd PARTY LABORATORY TEST JUST AS A REFERENCE FOR APPLICATION DESIGN. IT'S CUSTOMER'S RESPONSIBILITY TO VALIDATE SYSTEM FUNCTION AND CONNECTOR DURABILITY AT SPECIFIC APPLICATION AND EXTREME ENVIRONMENT CONDITIONS. WE RECOMMEND CUSTOMER TO CONSIDER MARGIN IN APPLICATION DESIGN TO AVOID OVER HEAT IN HIGH CURRENT SITUATION.

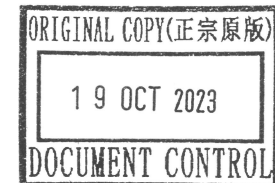
HW P/N	ORDER P/N
14192288	HH4SMD8TMS
14192289	HH4SFD8TMS

1. SPECIFICATION

SPECIFICATION	
CONTACT SIZE	10mm ² /8AWG
APPROVALS	107201 0002
RATED CURRENT (IEC)	55A
RATED SYSTEM VOLTAGE	1500V
CONTACT RESISTANCE	0.25mΩ TYP. FOR S&F TERMINAL
DEGREE OF PROTECTION	IP68(1m,24h)
PIN CONTACT MATERIAL	COPPER, TIN PLATED
INSULATION	THERMOPLASTIC
AMBIENT TEMPERATURE	-40° TO +85°
STRIP LENGTH	7.0mm
CABLE JACKET DIAMETER	FROM 7.5mm TO 8.8mm


ORDER P/N IN SYSTEM
H H 4 S F D 8 T M S

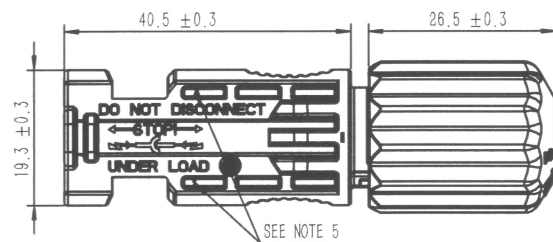
F: FEMALE END
M: MALE END



NOTES:

THIS DOCUMENT CONTAINS PROPRIETARY INFORMATION AND SUCH INFORMATION MAY NOT BE DISCLOSED TO OTHERS FOR ANY PURPOSE OR USED FOR MANUFACTURING PURPOSES WITHOUT WRITTEN PERMISSION FROM THE AMPHENOL CORP.

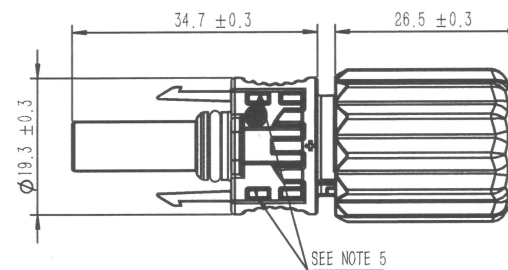
UNLESS OTHERWISE SPECIFIED		SPECIFICATIONS		POS	QTY	PART NUMBER	DESCRIPTION	NOTE
LINEAR DIMENSIONS ARE IN: MILLIMETERS TOLERANCES: ANGLES= ±2° DEFAULT LINEAR TOLERANCES SEE TABLE DIM & TOL PER ASME Y14.5M-1994; DRM PER MIL-DTL-31000; OTHER AMPHENOL STANDARDS: 9-9318	MATERIAL SPEC.	APPROVALS		DATE	PARTS LIST Amphenol Technology (ShenZhen) Co., Ltd. Building C, 2nd Industrial Zone of Xia Shi Jia, Jiangshi Community, Gongming Sub-district, Guangming New District, Shenzhen, PRC			
	N/A	DESIGNED BY JOHNNY WANG		2020-12-14	H4 PLUS CABLE END 8AWG CUSTOMER DRAWING			
		DESIGN MANAGER						
		DESIGN CHECKER						
	PROCESS SPEC.	THIRD ANGLE PROJECTION		DOCUMENT NO.	REV. B			
N/A			HH4S()D8TMS	SCALE: 1:0			SHEET 1 OF 2	



SEE NOTE 5



MALE END BODY

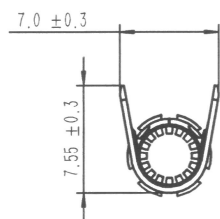
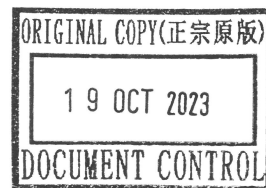


SEE NOTE 5

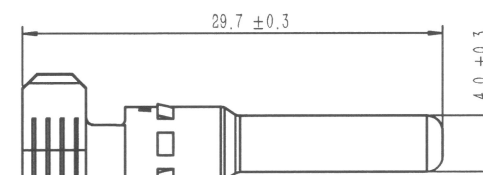
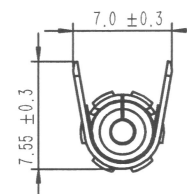


SEE NOTE 5

FEMALE END BODY



SOCKET



PIN

5. THE MARK OF LETTERS JUST THE VERSION OF THE PLASTIC PARTS FOR AMPHENOL'S MANUFACTURE PROCEDURE, WHEN THE CUSTOMER INSPECT THE PRODUCT, THEY CAN IGNORE THESE NUMBERS.

THIS DOCUMENT CONTAINS PROPRIETARY INFORMATION AND SUCH INFORMATION MAY NOT BE DISCLOSED TO OTHERS FOR ANY PURPOSE OR USED FOR MANUFACTURING PURPOSES WITHOUT WRITTEN PERMISSION FROM THE AMPHENOL CORP.

DOCUMENT NO.	HH4S(D)D8TMS	REV.
SCALE: 1.0	SHEET 2 OF 2	B