



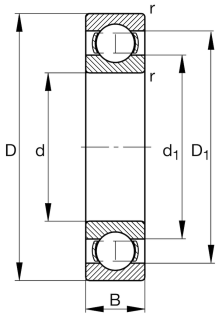
FAG

16005-A-C3

Deep groove ball bearing

Deep groove ball bearing 160..-A, single row, steel sheet metal cage

Technical information



Your current product variant

|                                  |              |   |
|----------------------------------|--------------|---|
| Changed internal design          | A            | Design variant A                        |
| Sealing                          | Without      | Not sealed                              |
| Cage                             | JN           | Steel sheet metal                       |
| Tolerance class                  | PN           | Normal (PN)                             |
| Dimensional / heat stabilization | SN           | Rings dimensional stabilized up to 120° |
| Lubricant                        | Without      | Bearing not greased                     |
| Radial internal clearance        | C3 (Group 3) | Internal clearance larger than CN       |
| Bore type                        | Z            | Cylindrical                             |

Main Dimensions & Performance Data

|                 |              |                                   |
|-----------------|--------------|-----------------------------------|
| d               | 25 mm        | Bore diameter                     |
| D               | 47 mm        | Outside diameter                  |
| B               | 8 mm         | Width                             |
| C <sub>r</sub>  | 8,860 N      | Basic dynamic load rating, radial |
| C <sub>0r</sub> | 5,610 N      | Basic static load rating, radial  |
| C <sub>ur</sub> | 325 N        | Fatigue load limit, radial        |
| n <sub>G</sub>  | 22,200 1/min | Limiting speed                    |
| n <sub>gr</sub> | 11,600 1/min | Reference speed                   |
| m               | 0.052 kg     | Weight                            |



Mounting dimensions

|              |        |                                      |
|--------------|--------|--------------------------------------|
| $d_{a\ min}$ | 27 mm  | Minimum diameter shaft shoulder      |
| $D_{a\ max}$ | 45 mm  | Maximum diameter of housing shoulder |
| $r_{a\ max}$ | 0.3 mm | Maximum fillet radius                |

Dimensions

|            |          |                              |
|------------|----------|------------------------------|
| $r_{\min}$ | 0.3 mm   | Minimum chamfer dimension    |
| $D_1$      | 40.4 mm  | Shoulder diameter outer ring |
| $D_2$      | 42.87 mm | Caliber diameter outer ring  |
| $d_1$      | 32.5 mm  | Shoulder diameter inner ring |


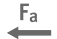




Temperature range

|            |        |                            |
|------------|--------|----------------------------|
| $T_{\min}$ | -30 °C | Operating temperature min. |
| $T_{\max}$ | 120 °C | Operating temperature max. |

Calculation factors

|       |      |                    |
|-------|------|--------------------|
| $f_0$ | 15.1 | Calculation factor |
|-------|------|--------------------|

Characteristics

|   |                              |
|---|------------------------------|
|  | Radial load                  |
|  | Axial load in one direction  |
|  | Axial load in two directions |
|  | Grease Lubrication           |
|  | Oil Lubrication              |
|  | Not sealed                   |