

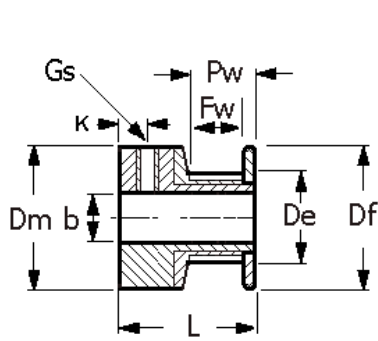
## Plastic Timing Pulleys MXL025

(0.080" / 2.032mm pitch)

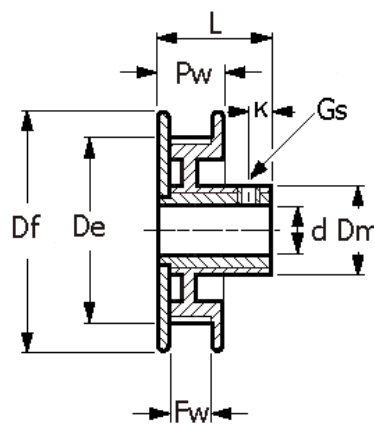
### Moulded Metric Insert

Pilot Bore

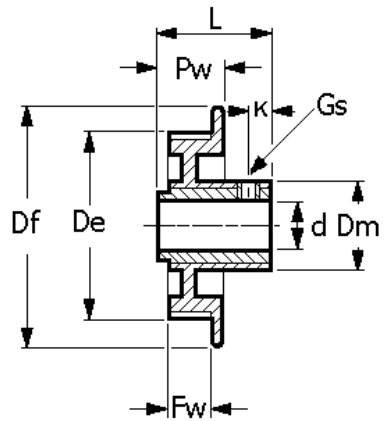
in Polycarbonate - Glass Filled with Aluminium / Brass Insert



Type A with Aluminium Insert



Type B with Aluminium Insert



Type C with Brass Insert

### Dimensions

All dimensions in mm.  
Bore tolerance +0.025 / -0.00mm.  
General tolerances ±0.25mm unless otherwise marked.  
Temperature range -40°C to +80°C

Stock Number	Type	No Teeth	Pitch Diam. mm	O.D De mm	Df mm	Dm mm	Fw mm	L mm	Bore d mm	Pw mm	Gs	K mm	Insert
7784714	A	18	11.63	11.13	16	13	8	17.5	5	11	1 x M3	3	Alu.
7784718	A	20	12.93	12.42	17	13	8	17.5	5	11	1 x M3	3	Alu.
7784727	B	22	14.22	13.72	19	13	8	17.5	5	11	1 x M3	3	Alu.
7784720	B	24	15.52	15.01	20	13	8	17.5	5	11	1 x M3	3	Alu.
7784724	B	30	19.40	18.89	24	13	8	17.5	5	11	1 x M3	3	Alu.
7784733	B	36	23.29	22.78	28	13	8	17.5	5	11	1 x M3	3	Alu.
7784736	C	40	25.88	25.37	30	17	8	17.5	5	11	1 x M3	3	Brass
7784730	C	44	28.45	27.94	33	17	8	17.5	5	11	1 x M3	3	Brass
7784749	C	48	31.04	30.53	35	17	8	17.5	5	11	1 x M3	3	Brass
7784742	C	60	38.81	38.30	43	17	8	17.5	6	11	1 x M3	3	Brass
7784746	C	72	46.56	46.05	51	17	8	17.5	6	11	1 x M3	3	Brass
7784755	C	80	51.74	51.23	56	17	8	17.5	6	11	1 x M3	3	Brass