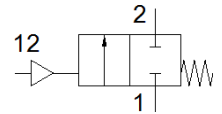


# angle seat valve VZXF-L-M22C-M-A-G2-430-H3B1-50-4

Part number: 1002510

**FESTO**

Pneumatically actuated angle seat valve in red brass. Over seat version, safety position closed, G thread, nominal width 2".



## Data sheet

| Feature                                 | Value   |
|---|---|
| Design structure                        | Poppet valve with piston actuator   |
| Type of actuation                       | pneumatic   |
| Sealing principle                       | soft  |
| Assembly position                       | Any   |
| Mounting type                           | Line installation   |
| Line connection                         | G2 threaded collar to DIN ISO 228   |
| Nominal size                            | 43 mm   |
| Valve function                          | 2/2 closed, monostable  |
| Flow direction                          | non reversible  |
| Medium pressure                         | 0 ... 4 bar   |
| Nominal pressure of process valve       | 16  |
| Exhaust-air function                    | not throttleable  |
| Type of reset                           | mechanical spring   |
| Type of piloting                        | With external control   |
| Pneumatic connection                    | Female thread G1/8  |
| Operating pressure                      | 6 ... 10 bar  |
| Medium                                  | Vapour<br>Inert gases<br>Filtered compressed air, degree of filtration 200 µm |
| Flow direction                          | Above valve seat, for gaseous media   |
| Operating medium                        | Compressed air in accordance with ISO8573-1:2010 [7:4:4]                      |
| Max. viscosity                          | 600 mm <sup>2</sup> /s  |
| Medium temperature                      | -10 ... 80 °C   |
| Ambient temperature                     | -10 ... 60 °C   |
| Flow rate Kv                            | 28 m <sup>3</sup> /h  |
| Materials note                          | Contains PWIS substances<br>Conforms to RoHS                                  |
| Material process valve housing          | Gunmetal (red brass)  |
| Material number, process valve housing  | CC499K  |
| Material spindle seal                   | NBR   |
| Material seat seal                      | PTFE  |
| Product weight                          | 2,800 g   |
| CE mark (see declaration of conformity) | to EU directive pressure devices  |
| Corrosion resistance classification CRC | 1 - Low corrosion stress  |
| Material drive housing                  | Brass   |