

Products

SP60 series | Double-pole momentary switch 16A quick connection 6.3 black body under-button



PRODUCT CODE: SP6017C100000

Wiring diagrams

Terminal type



sample image

accessories

Body colour



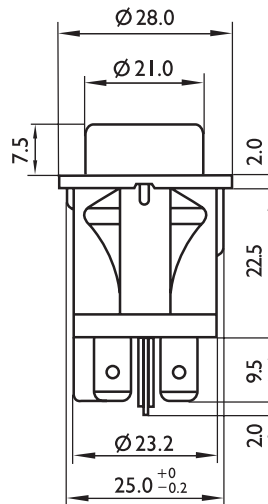
Rating

16 (6) A / 250 VAC
 10 (4) A / 400 VAC
 10 (4) A / 250 VAC - 5E4
 T120/55 °C

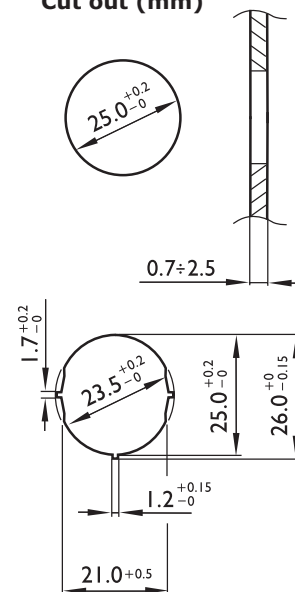
Approvals



Dimensions (mm)



Cut out (mm)



Termination

