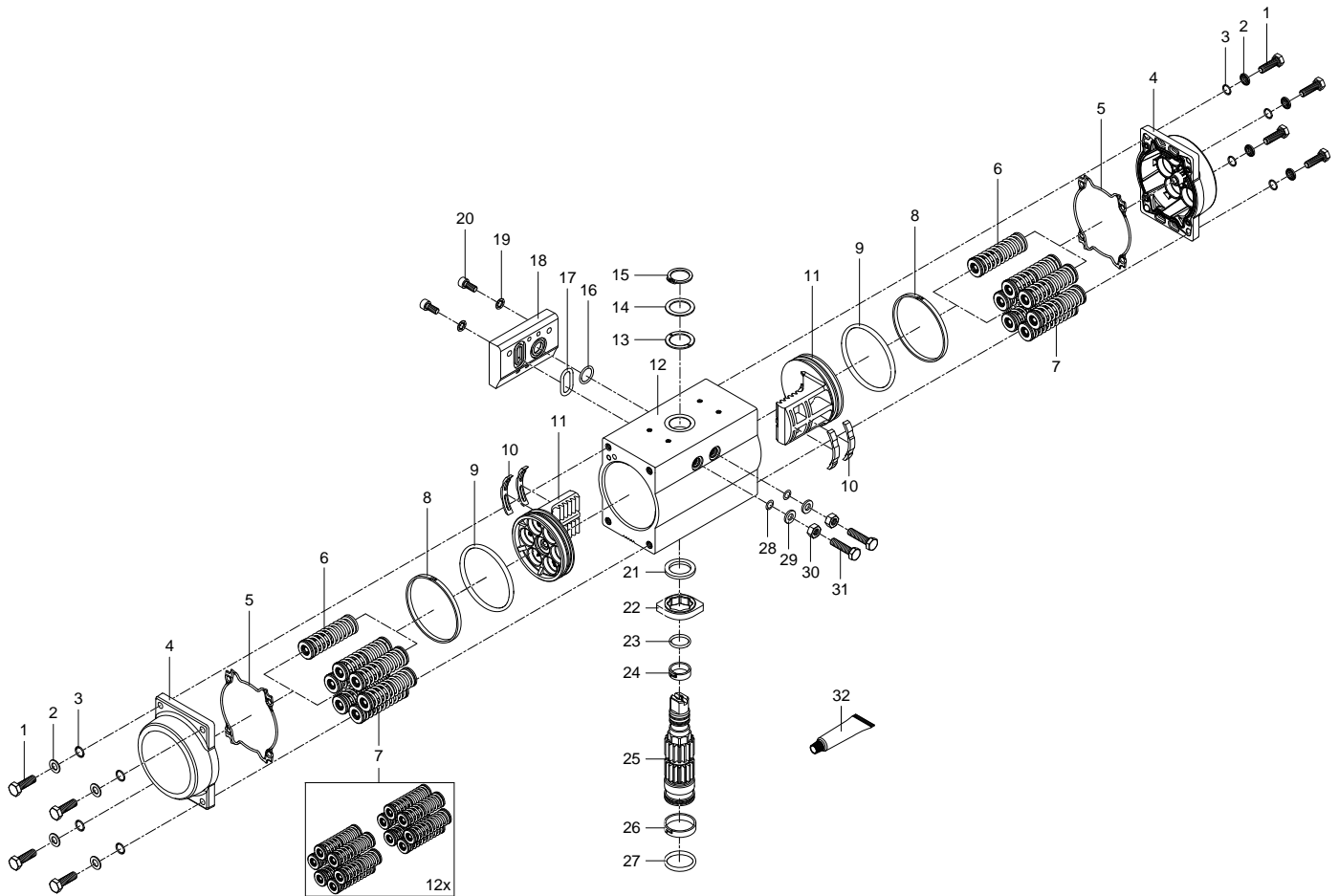


8048134 DFPD-120-RP-90-RS60-F0507 Semi-rotary drive - Series: All



8048134 DFPD-120-RP-90-RS60-F0507 Semi-rotary drive - Series: All

| Pos. | Part no. | Type | Note | Qty. | Unit |
|------|----------|--|--|------|------|
| A | 8190152 | DFPD-120-.. REV1 Set of wearing parts | Spare parts: 3, 5, 8, 9, 10, 13, 15, 16, 17, 19, 21, 23, 24, 26, 27, 28, 29, 30, 31 ▶ Replacing the wearing parts | 1 | PC |
| 1 | | ISO 4017-M8X25-A2-70 Hexagon head screw | Not available Tightening torque 23.5 Nm / 17.3 lbf ft | 8 | PC |
| 2 | | 8,3X15X1,5-1.4301 Ring | Not available | 8 | PC |
| 3 | | DIN 6797-J-8,4-A2-70 Toothed disc | Not available separately, see position 6+7+999 | 8 | PC |
| 4 | | DFPD-120-S End cap | Not available | 2 | PC |
| 5 | | DFPD-120 Moulded seal | Not available separately, see position A | 2 | PC |
| 6 | 8061431 | DFPD-120-..S-1-../T6 Spring module | | 1 | PC |
| 7 | 8060130 | DFPD-120-..S-12-../T6 Spring module | Attention! 12 pieces included | 1 | PC |
| 8 | | DFPD-120-../T6 Slip ring | Not available separately, see position A ▶ Repair note: Slip_ring | 2 | PC |
| 9 | | 80X4,5-N-NBR70 O-ring | Not available separately, see position A | 2 | PC |
| 10 | | DFPD-120-../T6 Slide element | Not available separately, see position A | 4 | PC |
| 11 | | DFPD-120-90 Piston | Not available Lubricate with SYNTHY POLYMER 402/2 during assembly | 1 | PC |
| 12 | | DFPD-120-90-F0507-AN Housing | Not available Lubricate with SYNTHY POLYMER 402/2 during assembly | 1 | PC |
| 13 | | DFPD-120-../T6 Slip ring | Not available separately, see position A | 1 | PC |
| 14 | | DIN 988-25X35X1-A2 Shim | Not available | 1 | PC |
| 15 | | DIN 471-25X1,2-A2 Retaining ring | Not available separately, see position A | 1 | PC |
| 16 | | B-16X2-N-NBR70 O-ring ISO3601 | Not available separately, see position A | 1 | PC |
| 17 | | B-21X2-N-NBR70 O-ring ISO3601 | Not available separately, see position A | 1 | PC |
| 18 | | DFPD-120/160-AN Sub-base | Not available | 1 | PC |
| 19 | | J-5,1-A2-70 Toothed disc | Not available separately, see position A | 2 | PC |
| 20 | | ISO 4762-M5X16-A2-70 Socket head screw | Not available Tightening torque 7 Nm / 5.2 lbf ft | 2 | PC |
| 21 | | DFPD-120-../T6 Slip ring | Not available separately, see position A | 1 | PC |
| 22 | | DFPD-120-90 Cam | Not available | 1 | PC |
| 23 | | B-20,24X2,62-N-NBR70 O-ring ISO3601 | Not available separately, see position A | 1 | PC |
| 24 | | DFPD-120-../T6 Slip ring | Not available separately, see position A ▶ Repair note: Slip_ring | 1 | PC |
| 25 | | DFPD-120-KT17 Shaft | Not available Lubricate with SYNTHY POLYMER 402/2 during assembly | 1 | PC |
| 26 | | DFPD-120-../T6 Slip ring | Not available separately, see position A ▶ Repair note: Slip_ring | 1 | PC |

| Pos. | Part no. | Type | Note | Qty. | Unit |
|------|----------|--|---|------|------|
| 27 | | B-36,14X2,62-N-NBR70 O-ring ISO3601 | Not available separately, see position A | 1 | PC |
| 28 | | B-7,59X2,62-N-NBR70 O-ring ISO3601 | Not available separately, see position A | 2 | PC |
| 29 | | 8,2X16X1,5-1.4301 Ring | Not available separately, see position A | 2 | PC |
| 30 | | DIN 934-M8-A2-70 Hex nut | Not available separately, see position A Tightening torque 23.5 Nm / 17.3 lbf ft | 2 | PC |
| 31 | | DFPD-120 adjusting screw | Not available separately, see position A | 2 | PC |
| 32 | | SYNTHY POLYMER 402/2 Lubricating grease | Not available SYNTHY POLYMER 402-2 Lubricating grease | 1 | PC |