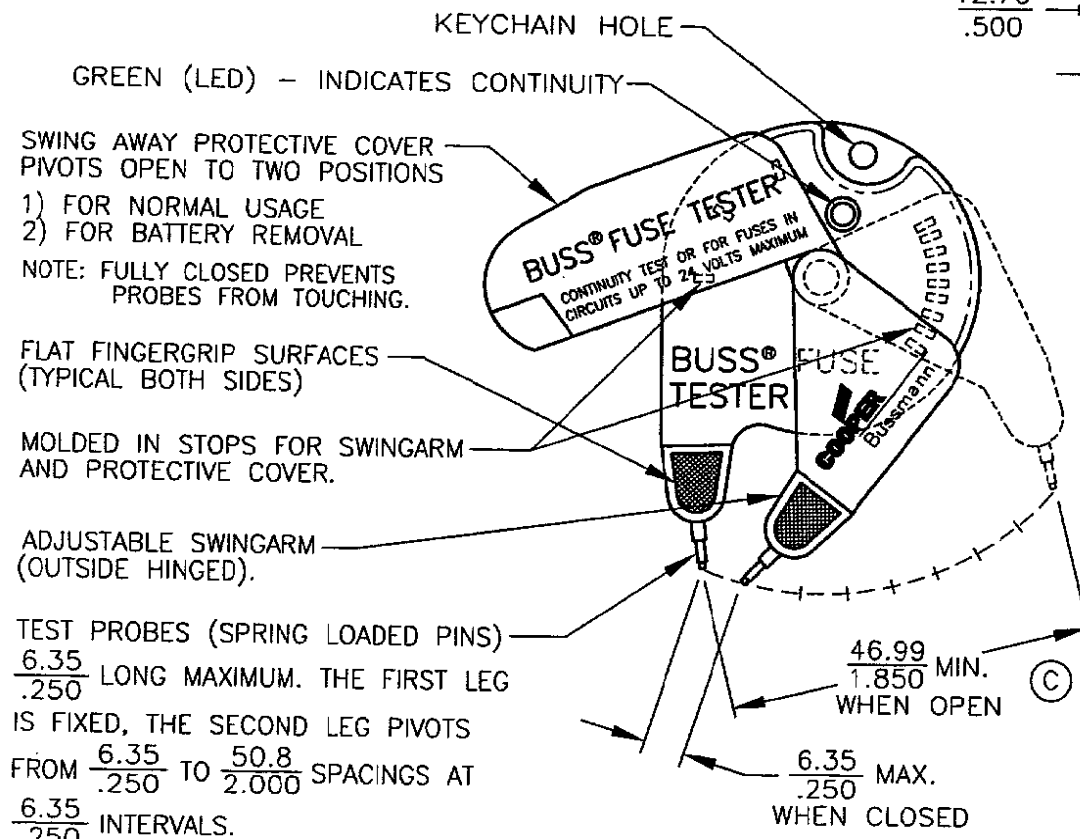


|  |           |                 |                 |           |
|--|-----------|-----------------|-----------------|-----------|
| TITLE<br><b>FUSE TESTER</b>                            |           | DATE<br>1-20-95 | NO.<br>FT-2     | REV.<br>C |
| DWG./CHK<br>TCB/JS                                     | PROG.ENG. | SUPERSEDES      |                 |           |
| COOPER Bussmann<br>St. Louis, MO 63178                 |           | REV.<br>FT-2 B  | DATED<br>8-3-94 |           |
| LETTERS IN CIRCLE INDICATE CHANGE FROM PRECEDING PRINT |           |                 |                 |           |

**SCHEMATIC DRAWING OF BUSSMANN  
UNIVERSAL FUSE TESTER  
(12 VOLT AUTOMOTIVE / MARINE)  
(24 VOLTS MAXIMUM)**

K40217  
PAGE 1 OF 4  
(A) NO CHANGE

TERMINAL SPACING: MINI FUSE =  $\frac{6.35}{.250}$   
FRN-R 60 =  $\frac{50.8}{2.000}$

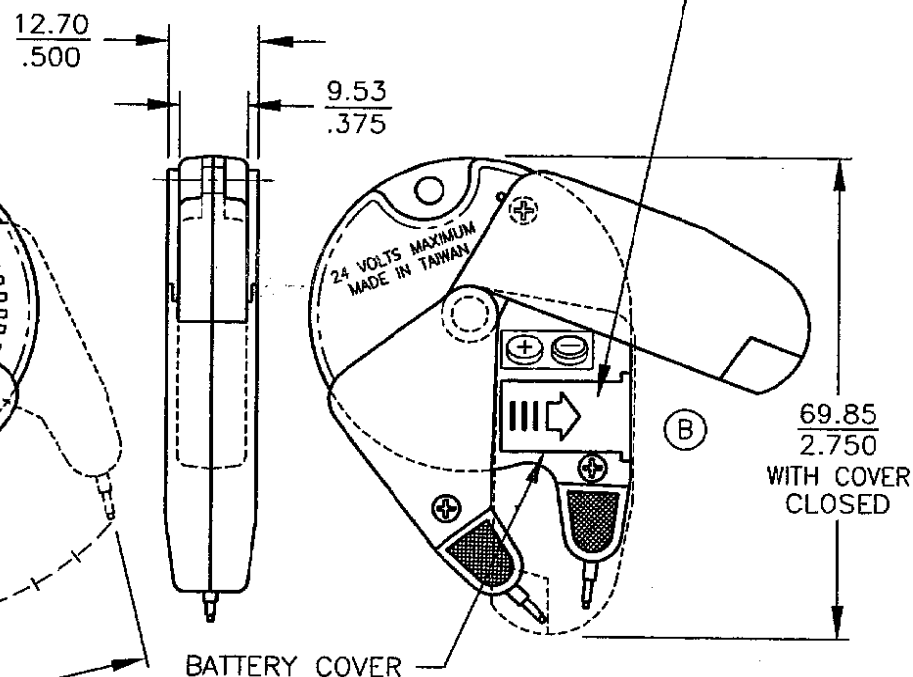


NOTE: PROBES MUST BE ABLE TO TOUCH EACH OTHER FOR BATTERY CHECK.

|              |  |               |   |
|--------------|--|---------------|---|
| E<br>J<br>56 | CONFIDENTIAL. THE INFORMATION CONTAINED IN THIS DOCUMENT IS THE PROPERTY OF COOPER INDUSTRIES, INC. IT IS NOT FOR PUBLIC DISCLOSURE. POSSESSION OF THE INFORMATION DOES NOT CONVEY ANY RIGHT TO LOAN, REPRODUCE, OR DISCLOSE THE INFORMATION. UNAUTHORIZED REPRODUCTION OR USE OF THE INFORMATION IS PROHIBITED. THIS DOCUMENT IS TO BE RETURNED TO COOPER INDUSTRIES, INC. UPON COMPLETION OF THE PURPOSE FOR WHICH IT IS LOANED OR UPON REQUEST. | SCALE<br>FULL | UNLESS OTHERWISE SPECIFIED TOLERANCES TO BE:<br>METRIC $\pm .38\text{mm}$<br>DECIMAL $\pm .015"$<br>ANGULAR $\pm 2^\circ$ |
|              | COPYRIGHT Cooper Industries, Inc.<br>This is an unpublished work. The disclosure of this work is limited to select personnel. Further dissemination or disclosure to the public is prohibited. This unpublished work is protected by Federal Copyright law and all rights thereunder are reserved by Cooper Industries, Inc.   |               |   |
|              | (O) INDICATES CRITICAL DIMENSION 12700   |               |   |

SEE PAGE 2 FOR MARKING DETAILS  
AND PAGE 3 FOR SCHEMATIC DIAGRAM.

TO BE SUPPLIED WITH 2 REPLACEABLE  
WAFFER BATTERIES AND PROTECTIVE  
PULL STRIP INSTALLED BY VENDOR.



(C) MATERIAL: PC BAYER #6555  
FLAMMABILITY RATING: 94 V-0  
COLOR: YELLOW PMS 109