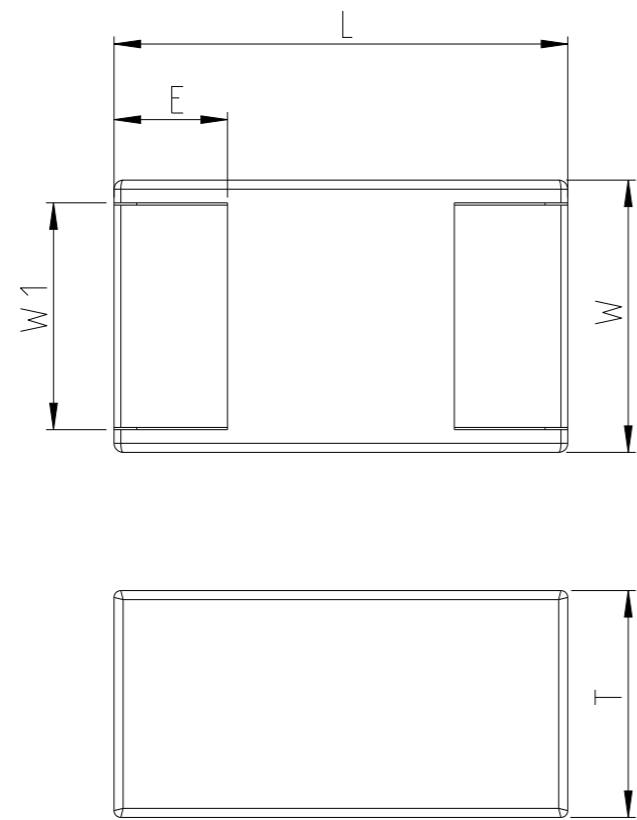
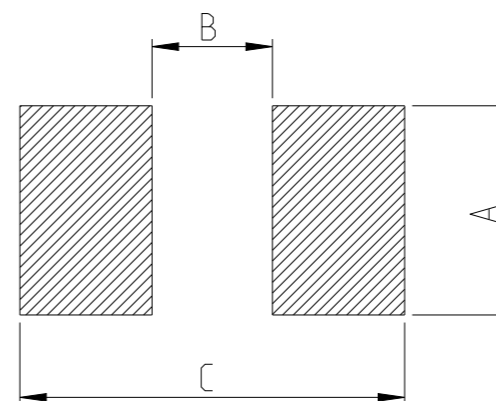


P	LTR	DESCRIPTION	DATE	DWN	APVD
	BA	NEW DRAWING	17JUL2025	AN	GT



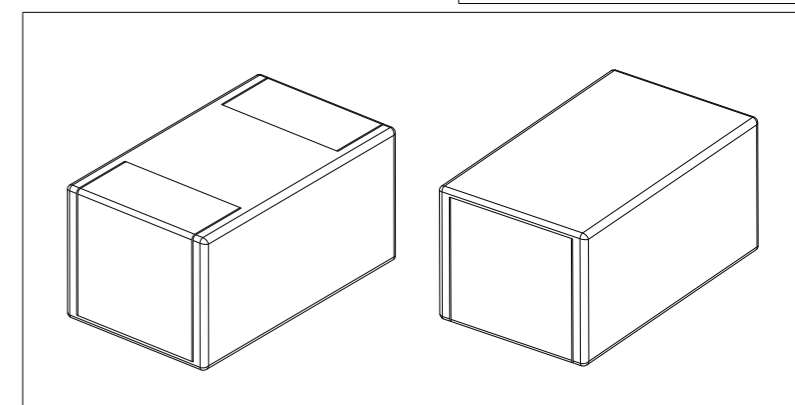
NOTE:  
FOR FURTHER INFORMATION SEE DATA SHEET FOR  
WIRE WOUND SMD POWER INDUCTOR TYPE 3657(HC) SERIES

RECOMMENDED LAND PATTERN



TYPE	Size (Inch)	L (mm)	W (mm)	W1 (mm)	T (mm)	E (mm)	A (mm)	B (mm)	C (mm)
3657	0803	2.00±0.20	1.20±0.20	1.00±0.20	0.80 max	0.50±0.30	1.2	0.9	2
3657	0805	2.00±0.20	1.20±0.20	1.00±0.20	1.00 max	0.50±0.20	1.2	0.9	2
3657	0806	2.00±0.20	1.60±0.20	1.40±0.20	1.00 max	0.50±0.20	1.6	0.9	2
3657	1004	2.50±0.20	2.00±0.20	1.80±0.20	1.00 max	0.60±0.30	2	1.2	2.8
3657	1008	2.50±0.20	2.00±0.20	1.80±0.20	1.20 max	0.60±0.30	2	1.2	2.8
3657	1310	3.20±0.20	2.50±0.20	2.30±0.20	1.10 max	0.60±0.20	2.5 TYP	1.7 TYP	3.2 TYP
3657HC	0806	2.00±0.20	1.60±0.20	1.40±0.20	1.00 max	0.60±0.30	1.6	0.9	2
3657HC	1004	2.50±0.20	2.00±0.20	1.80±0.20	1.00 max	0.60±0.30	2	1.2	2.8
3657HC	1008	2.50±0.20	2.00±0.20	1.80±0.20	1.20 max	0.60±0.30	2	1.2	2.8

RoHS Compliant



THIS DRAWING IS A CONTROLLED DOCUMENT.

DIMENSIONS:	TOLERANCES UNLESS OTHERWISE SPECIFIED:
mm	
	0 PLC ±
	1 PLC ±
	2 PLC ±
	3 PLC ±
	4 PLC ±
	ANGLES ±
MATERIAL	FINISH
-	-
-	-

DWN	17 JUL 2025
AMAL PRAKASH N	
CHK	17 JUL 2025
GILBERT, TRACY	
APVD	17 JUL 2025
GILBERT, TRACY	
PRODUCT SPEC	-
APPLICATION SPEC	-
WEIGHT	-
CUSTOMER DRAWING	

**STE** TE Connectivity

NAME: WIRE WOUND SMD POWER INDUCTOR TYPE 3657(HC) SERIES

SIZE	CAGE CODE	DRAWING NO	RESTRICTED TO
A3	00779	C=2176797	-

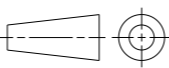
SCALE 5:1 SHEET 1 OF 3 REV BA


REVISIONS


P	LTR	DESCRIPTION	DATE	DWN	APVD
-		SEE SHEET 1	-	-	-

TCPN	CATALOGUE NUMBER	PART DESCRIPTION	PART STATUS
2176797-1	365703MR24T	3657 0803 R24 20% T&R	PRODUCTION
2176797-2	365703MR47T	3657 0803 R47 20% T&R	PRODUCTION
1-2176797-0	365705M1R0T	3657 0805 1R0 20% T&R	PRODUCTION
2-2176797-0	365706MR24T	3657 0806 R24 20% T&R	PRODUCTION
2-2176797-1	365706MR33T	3657 0806 R33 20% T&R	PRODUCTION
2-2176797-2	365706MR47T	3657 0806 R47 20% T&R	PRODUCTION
2-2176797-3	365706MR68T	3657 0806 R68 20% T&R	PRODUCTION
2-2176797-4	365706M1R0T	3657 0806 1R0 20% T&R	PRODUCTION
2-2176797-5	365706M1R5T	3657 0806 1R5 20% T&R	PRODUCTION
2-2176797-6	365706M2R2T	3657 0806 2R2 20% T&R	PRODUCTION
3-2176797-0	365704MR22T	3657 1004 R22 20% T&R	PRODUCTION
3-2176797-1	365704MR33T	3657 1004 R33 20% T&R	PRODUCTION
3-2176797-2	365704MR47T	3657 1004 R47 20% T&R	PRODUCTION
3-2176797-3	365704MR68T	3657 1004 R68 20% T&R	PRODUCTION
3-2176797-4	365704M1R0T	3657 1004 1R0 20% T&R	PRODUCTION
3-2176797-5	365704M1R5T	3657 1004 1R5 20% T&R	PRODUCTION
3-2176797-6	365704M2R2T	3657 1004 2R2 20% T&R	PRODUCTION
3-2176797-7	365704M4R7T	3657 1004 4R7 20% T&R	PRODUCTION
4-2176797-0	365708MR47T	3657 1008 R47 20% T&R	PRODUCTION
4-2176797-1	365708MR68T	3657 1008 R68 20% T&R	PRODUCTION
4-2176797-2	365708M1R0T	3657 1008 1R0 20% T&R	PRODUCTION
4-2176797-3	365708M1R5T	3657 1008 1R5 20% T&R	PRODUCTION
4-2176797-4	365708M2R2T	3657 1008 2R2 20% T&R	PRODUCTION
4-2176797-5	365708M3R3T	3657 1008 3R3 20% T&R	PRODUCTION
4-2176797-6	365708M4R7T	3657 1008 4R7 20% T&R	PRODUCTION
5-2176797-0	365710MR47T	3657 1310 R47 20% T&R	PRODUCTION
5-2176797-1	365710MR68T	3657 1310 R68 20% T&R	PRODUCTION
5-2176797-2	365710M1R0T	3657 1310 1R0 20% T&R	PRODUCTION
5-2176797-3	365710M1R5T	3657 1310 1R5 20% T&R	PRODUCTION
5-2176797-4	365710M2R2T	3657 1310 2R2 20% T&R	PRODUCTION
5-2176797-5	365710M3R3T	3657 1310 3R3 20% T&R	PRODUCTION

THIS DRAWING IS A CONTROLLED DOCUMENT.

DIMENSIONS: mm	TOLERANCES UNLESS OTHERWISE SPECIFIED:
	0 PLC ± 1 PLC ± 2 PLC ± 3 PLC ± 4 PLC ± ANGLES ±
MATERIAL -	FINISH -

DWN 17 JUL 2025 AMAL PRAKASH N	 TE Connectivity NAME WIRE WOUND SMD POWER INDUCTOR TYPE 3657(HC) SERIES - SIZE CAGE CODE DRAWING NO RESTRICTED TO A3 00779 C=2176797 - SCALE SHEET REV 5:1 2 OF 3 BA
CHK 17 JUL 2025 GILBERT, TRACY	
APVD 17 JUL 2025 GILBERT, TRACY	
PRODUCT SPEC -	
APPLICATION SPEC -	WEIGHT -
CUSTOMER DRAWING	

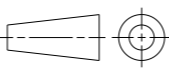
 TE Connectivity NAME WIRE WOUND SMD POWER INDUCTOR TYPE 3657(HC) SERIES - SIZE CAGE CODE DRAWING NO RESTRICTED TO A3 00779 C=2176797 - SCALE SHEET REV 5:1 2 OF 3 BA	
---	--

REVISIONS


P	LTR	DESCRIPTION	DATE	DWN	APVD
-		SEE SHEET 1	-	-	-

TCPN	CATALOGUE NUMBER	PART DESCRIPTION	PART STATUS
5-2176797-6	365710M4R7T	3657 1310 4R7 20% T&R	PRODUCTION
5-2176797-7	365710M6R8T	3657 1310 6R8 20% T&R	PRODUCTION
6-2176797-0	3657HC06MR10T	3657HC 0806 R10 20% T&R	PRODUCTION
6-2176797-1	3657HC06MR15T	3657HC 0806 R15 20% T&R	PRODUCTION
6-2176797-2	3657HC06MR22T	3657HC 0806 R22 20% T&R	PRODUCTION
6-2176797-3	3657HC06MR24T	3657HC 0806 R24 20% T&R	PRODUCTION
6-2176797-4	3657HC06MR33T	3657HC 0806 R33 20% T&R	PRODUCTION
6-2176797-5	3657HC06MR47T	3657HC 0806 R47 20% T&R	PRODUCTION
6-2176797-6	3657HC06MR68T	3657HC 0806 R68 20% T&R	PRODUCTION
6-2176797-7	3657HC06M1R0T	3657HC 0806 1R0 20% T&R	PRODUCTION
6-2176797-8	3657HC06M1R5T	3657HC 0806 1R5 20% T&R	PRODUCTION
6-2176797-9	3657HC06M2R2T	3657HC 0806 2R2 20% T&R	PRODUCTION
7-2176797-0	3657HC06M3R3T	3657HC 0806 3R3 20% T&R	PRODUCTION
7-2176797-1	3657HC06M4R7T	3657HC 0806 4R7 20% T&R	PRODUCTION
8-2176797-0	3657HC04MR22T	3657HC 1004 R22 20% T&R	PRODUCTION
8-2176797-1	3657HC04MR24T	3657HC 1004 R24 20% T&R	PRODUCTION
8-2176797-2	3657HC04MR33T	3657HC 1004 R33 20% T&R	PRODUCTION
8-2176797-3	3657HC04MR47T	3657HC 1004 R47 20% T&R	PRODUCTION
8-2176797-4	3657HC04MR68T	3657HC 1004 R68 20% T&R	PRODUCTION
8-2176797-5	3657HC04M1R0T	3657HC 1004 1R0 20% T&R	PRODUCTION
8-2176797-6	3657HC04M1R5T	3657HC 1004 1R5 20% T&R	PRODUCTION
8-2176797-7	3657HC04M2R2T	3657HC 1004 2R2 20% T&R	PRODUCTION
8-2176797-8	3657HC04M3R3T	3657HC 1004 3R3 20% T&R	PRODUCTION
8-2176797-9	3657HC04M4R7T	3657HC 1004 4R7 20% T&R	PRODUCTION
9-2176797-0	3657HC08MR47T	3657HC 1008 R47 20% T&R	PRODUCTION
9-2176797-1	3657HC08M1R0T	3657HC 1008 1R0 20% T&R	PRODUCTION
9-2176797-2	3657HC08M1R5T	3657HC 1008 1R5 20% T&R	PRODUCTION
9-2176797-3	3657HC08M2R2T	3657HC 1008 2R2 20% T&R	PRODUCTION
9-2176797-4	3657HC08M3R3T	3657HC 1008 3R3 20% T&R	PRODUCTION
9-2176797-5	3657HC08M4R7T	3657HC 1008 4R7 20% T&R	PRODUCTION

THIS DRAWING IS A CONTROLLED DOCUMENT.

DIMENSIONS: mm	TOLERANCES UNLESS OTHERWISE SPECIFIED:
	0 PLC ± 1 PLC ± 2 PLC ± 3 PLC ± 4 PLC ± ANGLES ±
MATERIAL	FINISH
-	-
-	-

DWN	17 JUL 2025
AMAL PRAKASH N	
CHK	17 JUL 2025
GILBERT, TRACY	
APVD	17 JUL 2025
GILBERT, TRACY	
PRODUCT SPEC	-
APPLICATION SPEC	-
WEIGHT	-
CUSTOMER DRAWING	

		TE Connectivity	
		NAME	
WIRE WOUND SMD POWER INDUCTOR		TYPE 3657(HC) SERIES	
SIZE	CAGE CODE	DRAWING NO	RESTRICTED TO
A3	00779	©=2176797	-
SCALE		SHEET	REV
5:1		3 OF 3	BA