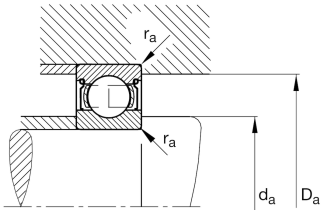
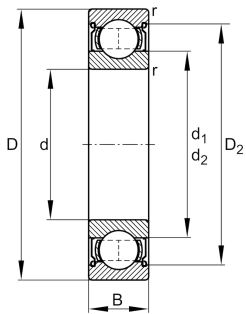


**FAG****6016-2Z-L069-C3**

Deep groove ball bearing

Deep groove ball bearing 60...-2Z, single row, shields, steel sheet metal cage

Technical information



Your current product variant

Sealing	2Z	Non-contact shield on both sides
Cage	JN	Steel sheet metal
Tolerance class	PN	Normal (PN)
Dimensional / heat stabilization	S0	Rings dimensional stabilized up to 150°
Lubricant	L069	Low noise high-temperature grease, interchangeable with grease L207
Radial internal clearance	C3 (Group 3)	Internal clearance larger than CN
Bore type	Z	Cylindrical

Main Dimensions & Performance Data

d	80 mm	Bore diameter
D	125 mm	Outside diameter
B	22 mm	Width
C _r	51,000 N	Basic dynamic load rating, radial
C _{0r}	40,000 N	Basic static load rating, radial
C _{ur}	2,410 N	Fatigue load limit, radial
n _G	6,300 1/min	Limiting speed
n _{gr}	6,100 1/min	Reference speed
m	0.86 kg	Weight



Mounting dimensions

$d_{a\min}$	86 mm	Minimum diameter shaft shoulder
$D_{a\max}$	119 mm	Maximum diameter of housing shoulder
$r_{a\max}$	1 mm	Maximum fillet radius

Dimensions

r_{\min}	1.1 mm	Minimum chamfer dimension
D_1	110.98 mm	Shoulder diameter outer ring
D_2	113.7 mm	Caliber diameter outer ring
d_1	93.7 mm	Shoulder diameter inner ring


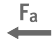




Temperature range

T_{\min}	-30 °C	Operating temperature min.
T_{\max}	150 °C	Operating temperature max.

Calculation factors

f_0	15.7	Calculation factor
-------	------	--------------------

Characteristics

	Radial load
	Axial load in one direction
	Axial load in two directions
	Lifetime lubrication, freedom from maintenance
	Grease Lubrication
	Sealed on both sides