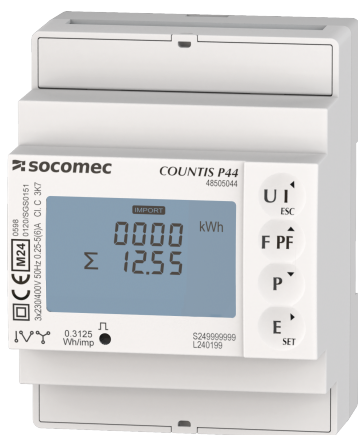


48505046

Energy Meter COUNTIS P46 Three/four conductor 3PH CT1-5A, MID M-BUS



Strong points

- Quick and easy wiring
- MID certification
- Versatile
- Complete ecosystem for easy integration
- Multi-interfaces
- Space-saving

Compliance with standards

- IEC 62053-21
- IEC 62053-23
- IEC 62053-31
- IEC 62052-11
- IEC 61010-1
- EN 50470-1
- EN 50470-3

Link to the reference



<https://emea.socomec.com/en/reference/48505046>

COUNTIS P4x are three-phase modular electrical energy meters that enable viewing of the different energies consumed and produced, and also of powers and other measurements directly on the backlit LCD display. They connect indirectly via a wide selection of transformers and current sensors.

They are suitable for use in sub-billing applications thanks to their MID certification.

Classification

UNSPSC	41113708
ETIM Class	EC001506
IGCC	6341

Commerce

Description	Modular active-energy meters COUNTIS P44 MID-certified Three phase on CT 1 and 5A, M-BUS type of electrical ports, fully integrated in SOCOMEC ecosystem including: Webview/screens/gateways/configuration software
Effective date	2025-11-01
Offer Life Cycle Code	40
Country of origin	CN
Former product list	48C03146 COUNTIS M46 3P CT MBUS MID

Environmental Sustainability

Climate change - Total - Cradle to Grave [kg CO ₂ eq.]	25
Climate change - Total - Cradle to Gate [kg CO ₂ eq.]	14
SVHC > 0.1 mass percentage?	No
RoHS applicable?	Yes

ETIM - Electrical characteristics

Nominal current (In) [A]	6
Max. current (Imax) [A]	6
Nominal voltage (Un) N-L [V]	184..276
Nominal voltage (Un) L-L [V]	320..480
Frequency [Hz]	45..55
Power consumption [W]	1
Accuracy class	C
Pole type	Three conductor/four conductor
Energy type	Effective power and reactive power
Suitable for	Purchase/supply
Tariff type	Multi-tariff
Tariff control	External
Measurement type load profile	No
Calibrated	Yes
Pulse output	Electrical
Pulse type	D0
Pulse rate [Imp/kWh (kvarh)]	10..10

ETIM - Mechanical characteristics

Escapement mechanism	No
Mounting method	DRA (DIN-rail adaptor)
Width in number of modular spacings	4
Width [mm]	72
Depth [mm]	65
Height [mm]	94.5
With lock code	No
Degree of protection (IP)	IP20
ETIM - Technical features	
Type of meter	Electronic
Model	Measurement transformer
Approval	Measuring Instruments Directive
Type of indication	Digital
Type of interface	M-bus (wired)
EEC40 signature	No
Logistics	
GTIN/EAN	3596033319471
Customs number	9028301900
Price unit	PC
Weight of the packing unit [kg]	0.3
Length of the packing unit [m]	0.08
Width of the packing unit [m]	0.12
Depth of the packing unit [m]	0.08
Technical Characteristics	
Height [mm]	94.5
Width [mm]	72
Depth [mm]	65
Application	Metering
Communication ports	M-BUS
Model	P46
Type	3PH CT1-5A, MID