

Piloted check valve HGL

FESTO



Characteristics

At a glance

Shut-off valve with manual override option.

- Valve function: piloted non-return function
- Screw-in with male thread
- Pneumatically piloted
- Pilot air connection: M5, G1/8, G1/4, G3/8, QS-4
- Manually operated exhaust with separate accessories possible

Additional measures are required for use in safety-related applications; in Europe, for example, the standards listed under the EC Machinery Directive must be observed.

Diagrams

[Link](#)  [hgl](#)



The diagrams shown in this document are also available online. These can be used to display precise values.

Type code

001	Series	
HGL	Piloted check valve	

002	Pneumatic connection 2	
1/8	Male thread G1/8	
1/4	Male thread G1/4	
3/8	Male thread G3/8	
1/2	Male thread G1/2	
M5	Male thread M5	

003	Pneumatic connection 1	
	Connection size as for port 1 or 2	
QS-4	Push-in connector 4 mm	
QS-6	Push-in connector 6 mm	
QS-8	Push-in connector 8 mm	
QS-10	Push-in connector 10 mm	
QS-12	Push-in connector 12 mm	

004	Generation	
	None	
B	Series B	

Datasheet

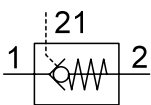
General technical data – Push-in connector HGL

Pneumatic connection, port 1	QS-4	QS-6	QS-8	QS-10	QS-12
Pneumatic connection, port 2	M5	G1/8	G1/4	G3/8	G1/2
Pilot air port 21	QS-4	M5	G1/8	G1/4	G3/8
Valve function	Piloted non-return function				
Type of actuation	Pneumatic				
Type of mounting	Screw-in, Via male thread				
Mounting position	optional				
Nominal torque	1.25 Nm	3.5 Nm	11 Nm	12.5 Nm	14 Nm
Tolerance for nominal tightening torque	± 10%				

General technical data – Female thread HGL

Pneumatic connection, port 1	M5	G1/8	G1/4	G3/8	G1/2
Pneumatic connection, port 2	M5	G1/8	G1/4	G3/8	G1/2
Pilot air port 21	M5	M5 G1/8	G1/8	G1/4	G3/8
Valve function	Piloted non-return function				
Type of actuation	Pneumatic				
Type of mounting	Screw-in, Via male thread				
Mounting position	optional				
Nominal torque	1.25 Nm	3.5 Nm	11 Nm	12.5 Nm	14 Nm
Tolerance for nominal tightening torque	± 10%				

Function



Operating and environmental conditions – Push-in connector HGL

Pneumatic connection, port 2	M5	G1/8	G1/4	G3/8	G1/2			
Pneumatic connection, port 1	QS-4	QS-6	QS-8	QS-10	QS-12			
Operating pressure	0.5 ... 10 bar							
Pilot pressure	2 ... 10 bar			1 ... 10 bar				
Operating medium	Compressed air to ISO 8573-1:2010 [7:4:4]							
Note on operating and pilot medium	Lubricated operation possible (in which case lubricated operation will always be required)							
Standard nominal flow rate 1->2 (6-5)	130 l/min	200 l/min	270 l/min	390 l/min	400 l/min	830 l/min	890 l/min	1,400 l/min
Standard flow rate 1->2 (6-0)	200 l/min	300 l/min	400 l/min	640 l/min	670 l/min	1,200 l/min	1,300 l/min	2,100 l/min
Ambient temperature	-10 ... 60°C							
Media temperature	-10 ... 60°C							
Storage temperature	-10 ... 60°C							
Corrosion resistance class CRC ¹⁾	2 - Moderate corrosion stress							
Maritime classification ²⁾	See certificate							

1) More information www.festo.com/x/topic/kbk

2) More information www.festo.com/catalogue/hgl -> Support/Downloads.

Datasheet

Operating and environmental conditions – Female thread HGL

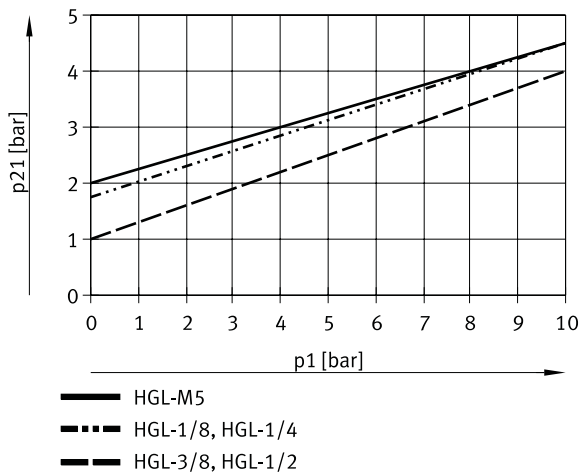
Pneumatic connection, port 2	M5	G1/8	G1/4	G3/8	G1/2
Operating pressure	0.5 ... 10 bar				
Pilot pressure	2 ... 10 bar			1 ... 10 bar	
Operating medium	Compressed air to ISO 8573-1:2010 [7:4:4]				
Note on operating and pilot medium	Lubricated operation possible (in which case lubricated operation will always be required)				
Standard nominal flow rate 1->2 (6-5)	130 l/min	300 l/min	550 l/min	1,100 l/min	1,600 l/min
Standard flow rate 1->2 (6-0)	200 l/min	430 l/min	680 l/min	1,500 l/min	2,100 l/min
Ambient temperature	-10 ... 60°C				
Media temperature	-10 ... 60°C				
Storage temperature	-10 ... 60°C				
Corrosion resistance class CRC ¹⁾	2 - Moderate corrosion stress				
Maritime classification ²⁾	See certificate				

1) More information www.festo.com/x/topic/kbk

2) More information www.festo.com/catalogue/hgl → Support/Downloads.

Materials

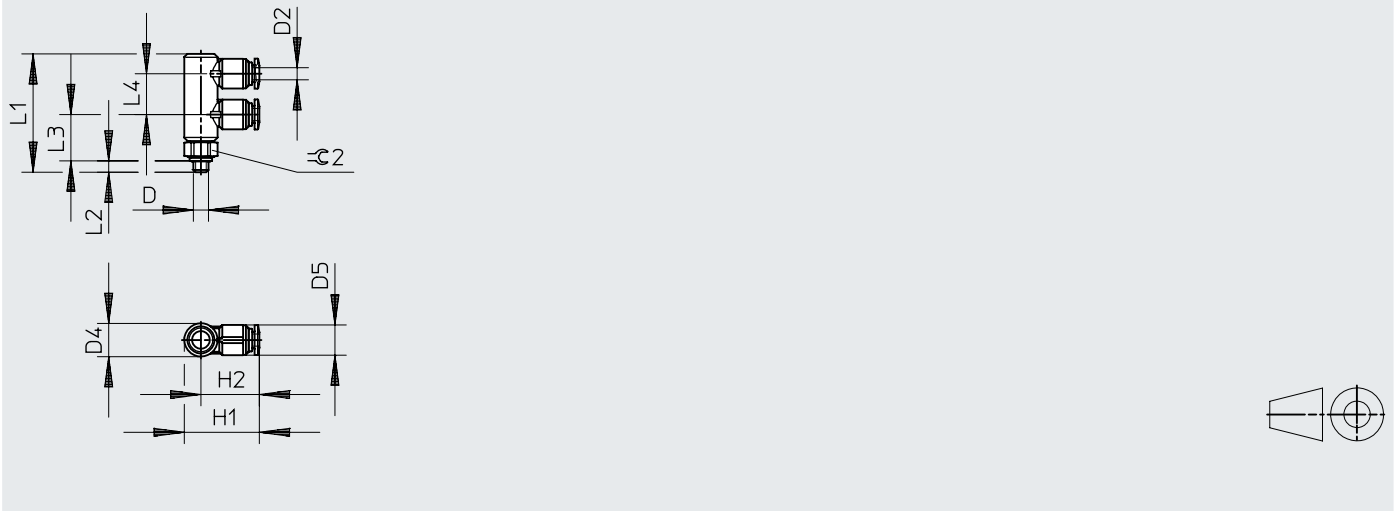
Material swivel fitting	Die-cast zinc
Material release ring	POM
Material hollow bolt	Wrought aluminium alloy, Anodised
Material screwed plug	Galvanised steel
Material seals	NBR
Material non-return collar	NBR
Note on materials	RoHS-compliant
LABS (PWIS) conformity	VDMA24364-B2-L
Cleanroom class	Class 4 according to ISO 14644-1

Minimum pilot pressure p₂₁ as a function of operating pressure p₁

Dimensions

Dimensions – Push-in connector HGL-M5

Download CAD data www.festo.com

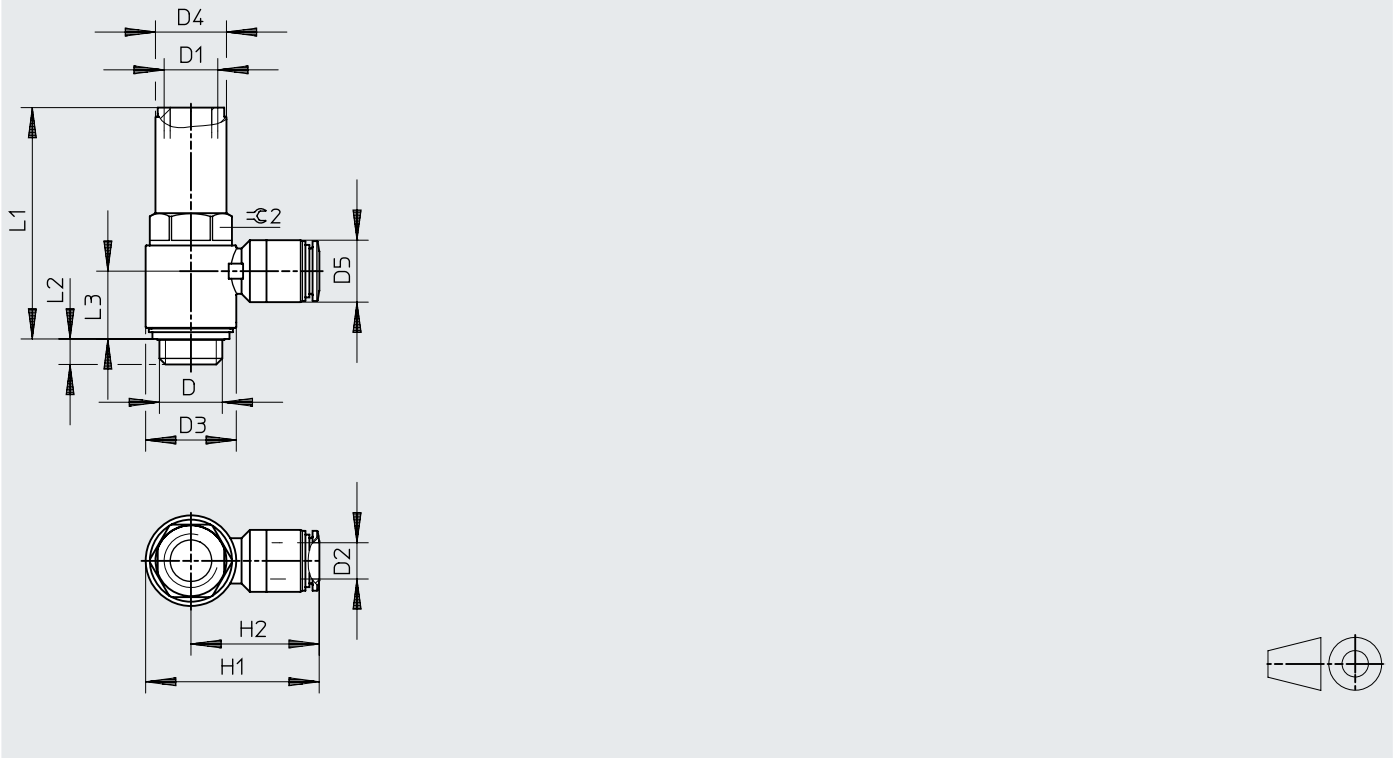


	D	D2	D4	D5	H1	H2	L1	L2	L3	L4	≈∠ 2
HGL-M5-QS-4	M5	4	11 ∅	10 ∅	24,9	19,4	39	4	15	13,5	10

Dimensions

Dimensions – Push-in connector HGL-1/8, HGL-1/4, HGL-3/8

Download CAD data www.festo.com

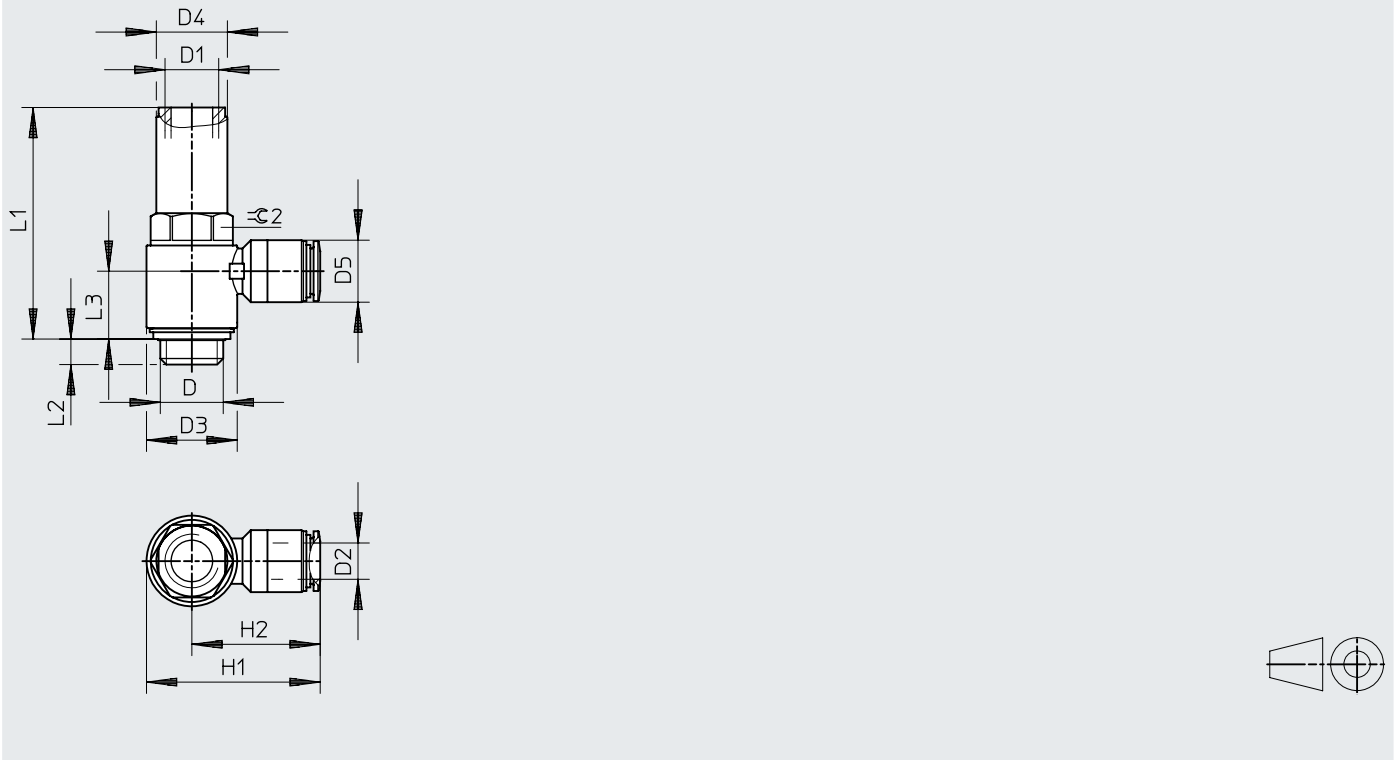


	D	D1	D2	D3 ∅	D4 ∅	D5 ∅	H1	H2	L1	L2	L3	L4	≅ 1	≅ 2
HGL-1/8-QS-4	G1/8	M5	4	13,8	11,8	10,2	29,4	22,5	42,6	5,4	13,9	37,8	8	12
HGL-1/8-QS-6			6			12,5	25,7	13,2						
HGL-1/4-QS-8	G1/4	G1/8	8	17,8	16	14,5	39,6	30,7	50,8	6,5	16,6	44,5	12	16
HGL-1/4-QS-10			10			17,5	33,1	15,5						
HGL-3/8-QS-8	G3/8	G1/4	8	22,4	18,8	14,5	44,1	32,9	56,3	7	18,2	49,5	15	19
HGL-3/8-QS-10			10			17,5	35,5	18,2						

Dimensions

Dimensions – Push-in connector HGL-1/2

Download CAD data www.festo.com

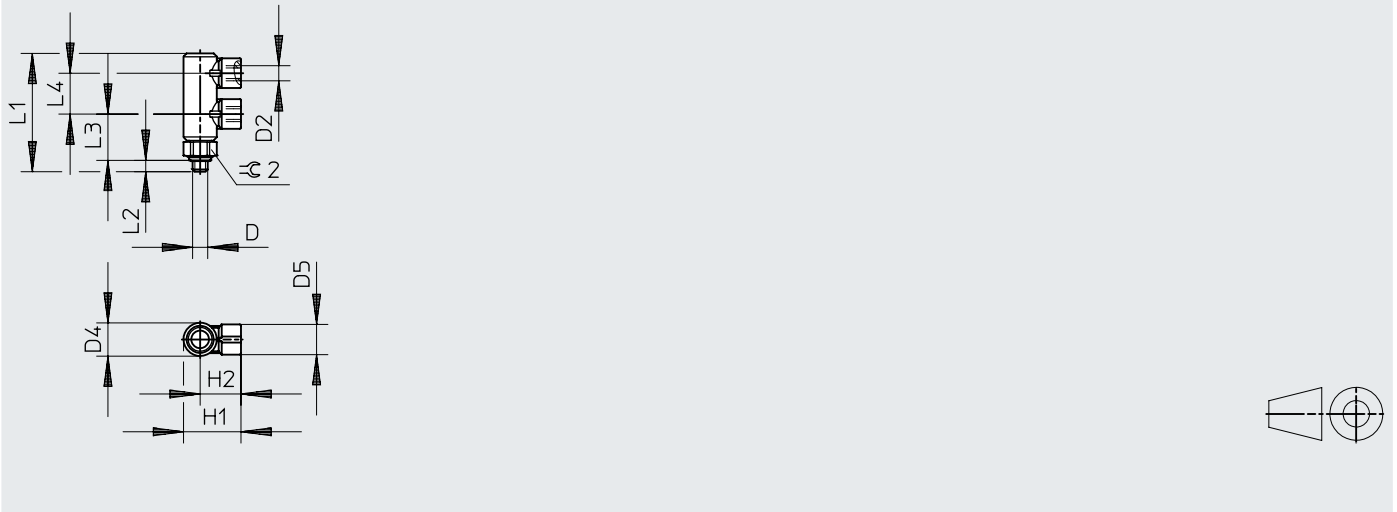


	D	D1	D2	D3 ∅	D4 ∅	D5 ∅	H1	H2	L1	L2	L3	∠ 24
HGL-1/2-QS-12	G1/2	G3/8	12	27,8	23,5	20,5	55,3	41,4	75,8	8,8	22,4	24

Dimensions

Dimensions – Female thread HGL-M5-B

Download CAD data www.festo.com

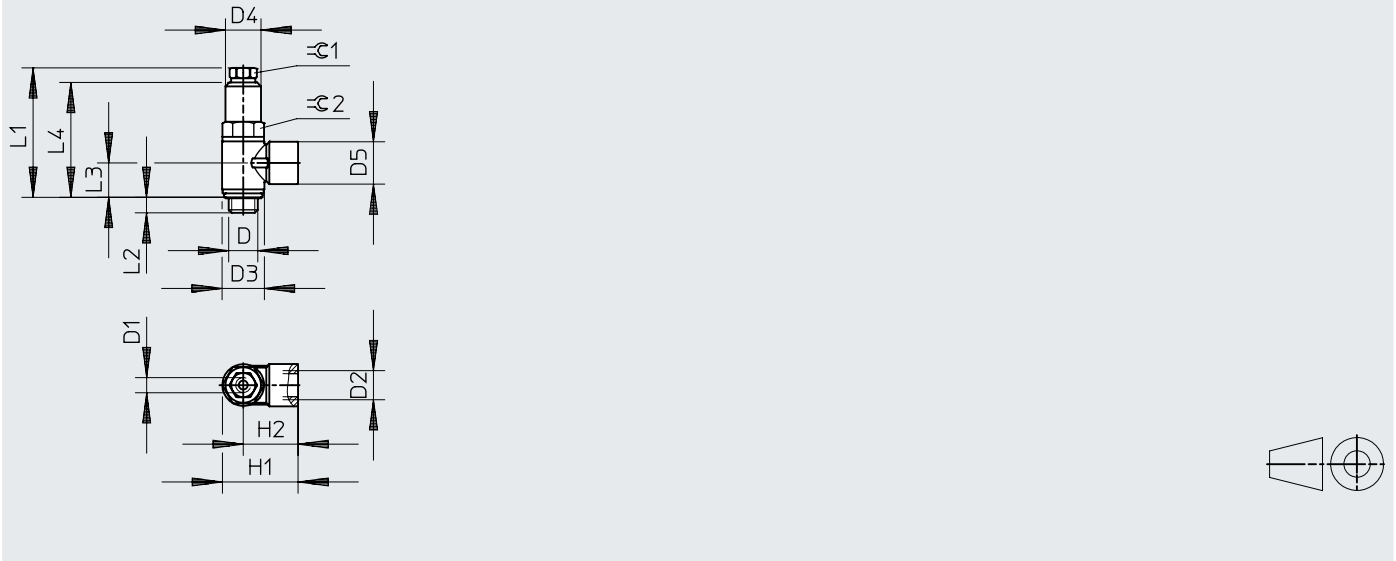


	D	D2	D4	D5	H1	H2	L1	L2	L3	L4	≈ 2
HGL-M5-B	M5	M5	11 ∅	10 ∅	19	13,5	39	4	15	13,5	10

Dimensions

Dimensions – Female thread HGL-1/8-B, HGL-1/4-B, HGL-3/8-B

Download CAD data www.festo.com

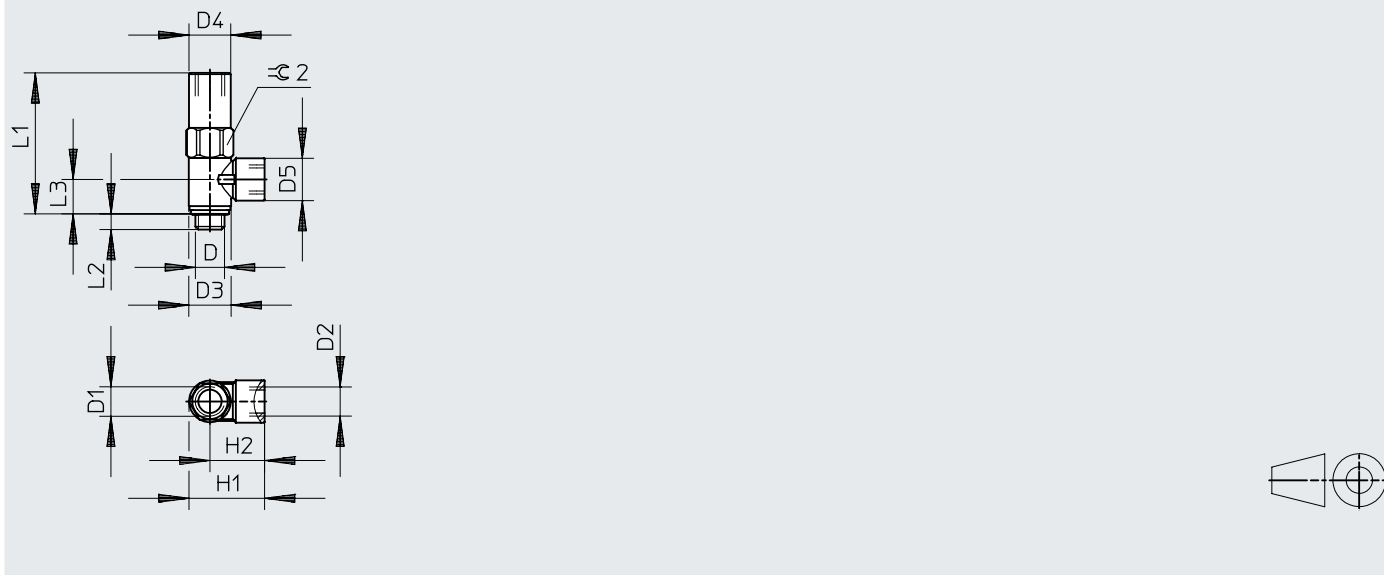


	D	D1	D2	D3 ∅	D4 ∅	D5 ∅	H1	H2	L1	L2	L3	L4	⊖ 1	⊖ 2
HGL-1/8-B	G1/8	M5	G1/8	14	11,8	14	25,1	18,1	42,6	5,4	11,2	37,8	8	12
HGL-1/4-B	G1/4	G1/8	G1/4	18	16	17,5	34	25	50,8	6,5	13,5	44,5	12	16
HGL-3/8-B	G3/8	G1/4	G3/8	23,8	18,8	20	39,3	27,4	56,3	7	15,1	49,5	15	19

Dimensions

Dimensions – Female thread HGL-1/8-1/8-B

Download CAD data www.festo.com



	D	D1	D2	D3	D4	D5	H1	H2	L1	L2	L3	≅ 2
HGL-1/8-1/8-B	G1/8	G1/8	G1/8	14	13,8	14	25,1	18,1	46,7	5,2	11,2	14

Dimensions

Dimensions – Female thread HGL-1/2-B

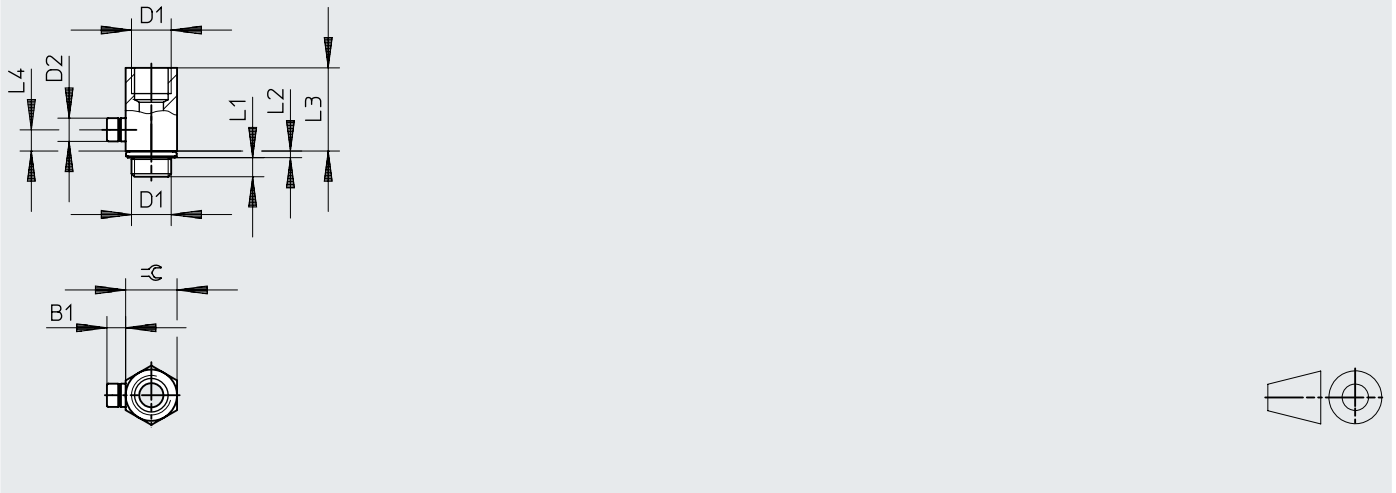
Download CAD data www.festo.com



	D	D1	D2	D3 ∅	D4 ∅	D5 ∅	H1	H2	L1	L2	L3	⊕ 2
HGL-1/2-B	G1/2	G3/8	G1/2	30	23,5	25	47,8	32,8	75,8	8,8	17,7	24


Dimensions


Dimensions – Manual override HAB


Download CAD data www.festo.com


	B1	D1	D2 ø	L1	L2	L3	L4	≈☞
HAB-1/8	6,2	G1/8	7,7	4,7	1,8	19,1	5	13
HAB-1/4	6,2	G1/4	7,7	5,8	2,2	28	7	17
HAB-3/8	6,2	G3/8	7,7	6,05	3,35	28,4	7	19
HAB-1/2	6,2	G1/2	7,7	7,9	2,6	38,5	7	24

Ordering data


Push-in connector HGL – M thread						
	Pneumatic connection, port 2	Pilot air port 21	Pneumatic connection, port 1	Product weight	Part no.	Type
	M5	M5	M5	21 g	530029	HGL-M5-B
		QS-4	QS-4		530038	HGL-M5-QS-4

Push-in connector HGL – G thread						
	Pneumatic connection, port 2	Pilot air port 21	Pneumatic connection, port 1	Product weight	Part no.	Type
	G1/8	M5	G1/8	20.8 g	530030	HGL-1/8-B
			QS-4	18.4 g	530039	HGL-1/8-QS-4
			QS-6	21.4 g	530040	HGL-1/8-QS-6
	G1/4	G1/8	G1/8	26.2 g	543253	HGL-1/8-1/8-B
			G1/4	41.2 g	530031	HGL-1/4-B
			QS-8	38.7 g	530041	HGL-1/4-QS-8
	G3/8	G1/4	QS-10	45 g	530042	HGL-1/4-QS-10
			G3/8	62.9 g	530032	HGL-3/8-B
			QS-8	54.7 g	530043	HGL-3/8-QS-8
	G1/2	G3/8	QS-10	60.3 g	530044	HGL-3/8-QS-10
			G1/2	129.4 g	530033	HGL-1/2-B
			QS-12	116.9 g	530045	HGL-1/2-QS-12

Female thread HGL – M-thread						
	Pneumatic connection, port 2	Pilot air port 21	Pneumatic connection, port 1	Product weight	Part no.	Type
	M5	M5	M5	21 g	530029	HGL-M5-B

Female thread HGL – G-thread						
	Pneumatic connection, port 2	Pilot air port 21	Pneumatic connection, port 1	Product weight	Part no.	Type
	G1/8	M5	G1/8	20.8 g	530030	HGL-1/8-B
		G1/8		26.2 g	543253	HGL-1/8-1/8-B
	G1/4	G1/4	G1/4	41.2 g	530031	HGL-1/4-B
	G3/8		G3/8	62.9 g	530032	HGL-3/8-B
	G1/2		G1/2	129.4 g	530033	HGL-1/2-B

Accessories

Manual override HAB				
	Pneumatic connection, port 1	Nominal size	Part no.	Type
	G1/8	4.1 mm	184585	HAB-1/8
	G1/4	7 mm	184586	HAB-1/4
	G3/8	11 mm	184587	HAB-3/8
	G1/2	14 mm	184588	HAB-1/2