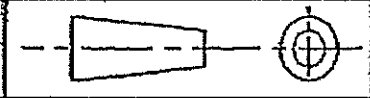
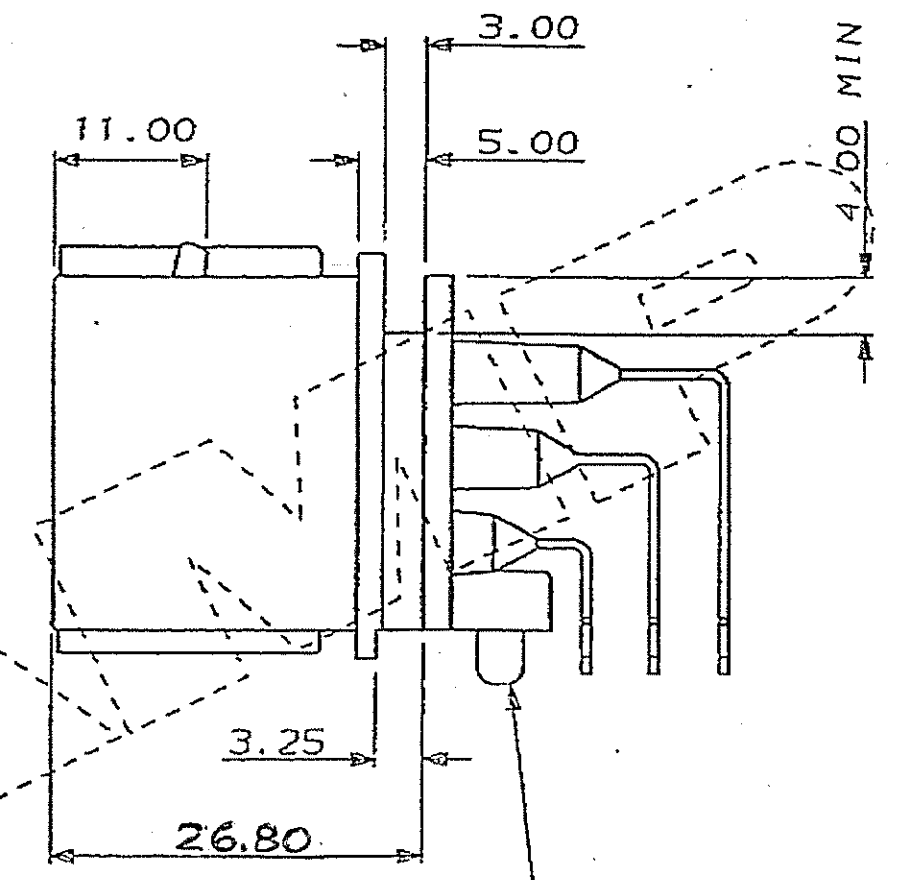
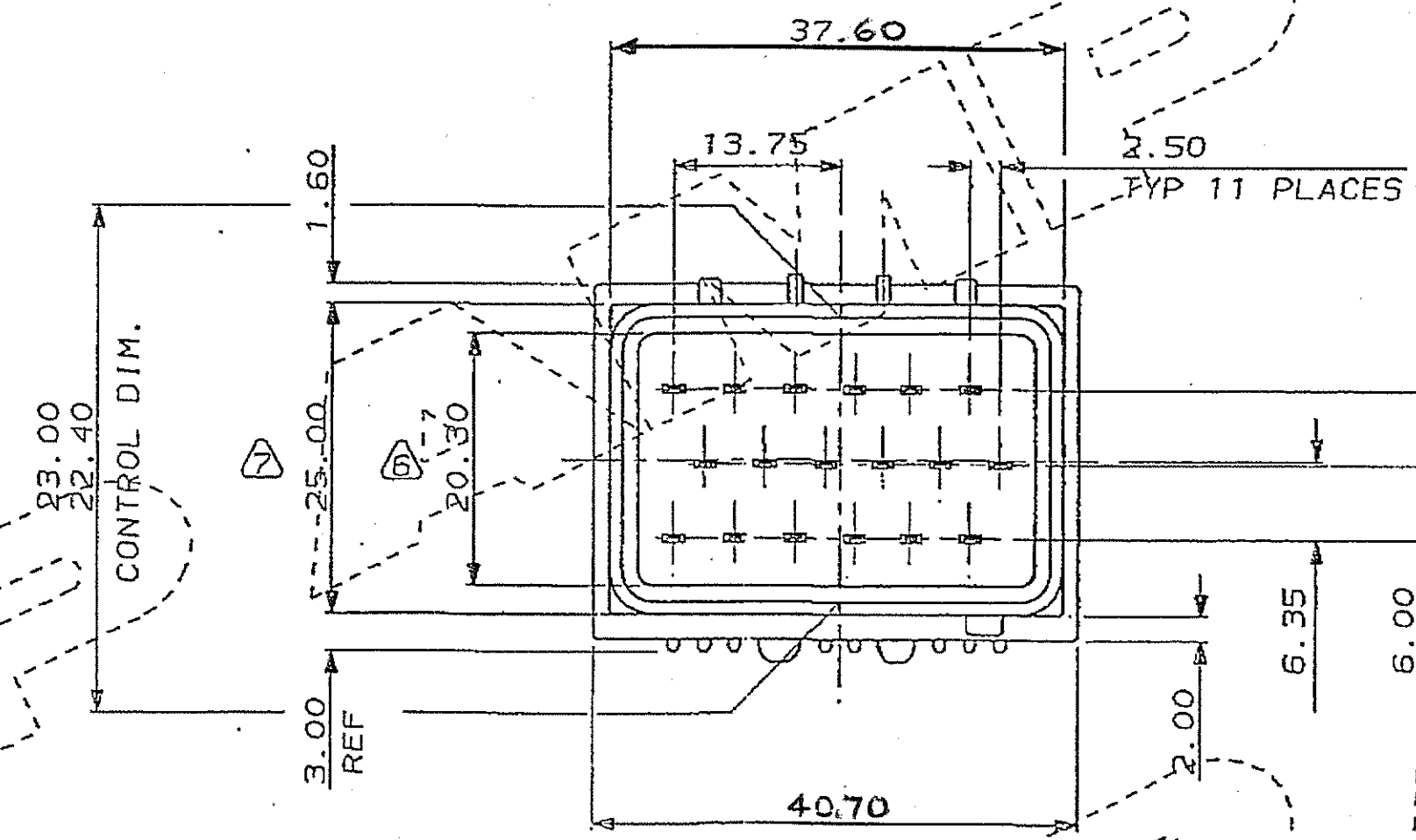
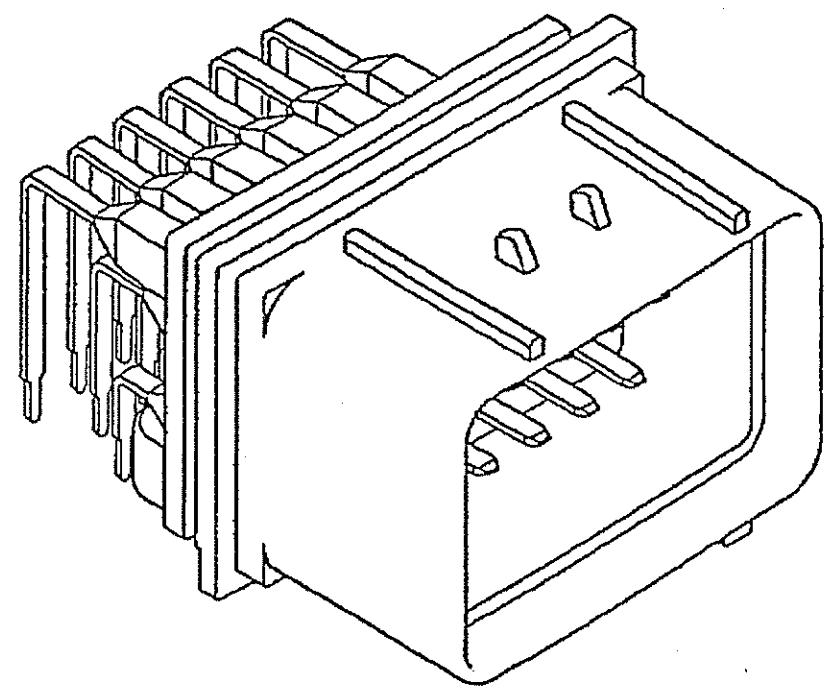


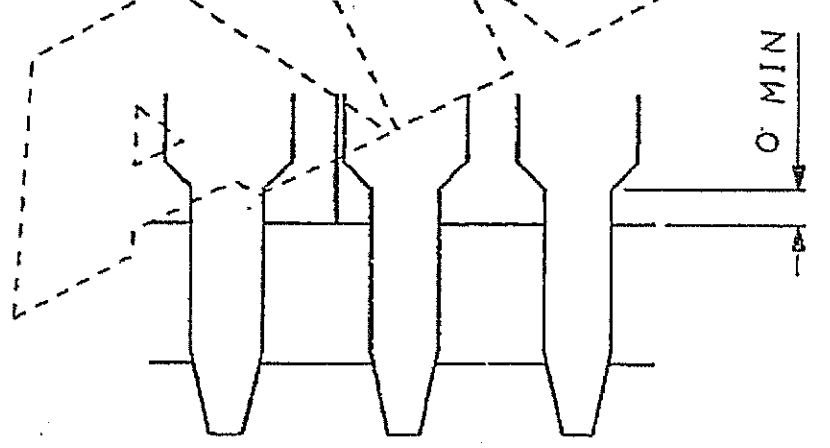
DO NOT SCALE DIMENSIONS IN MM.



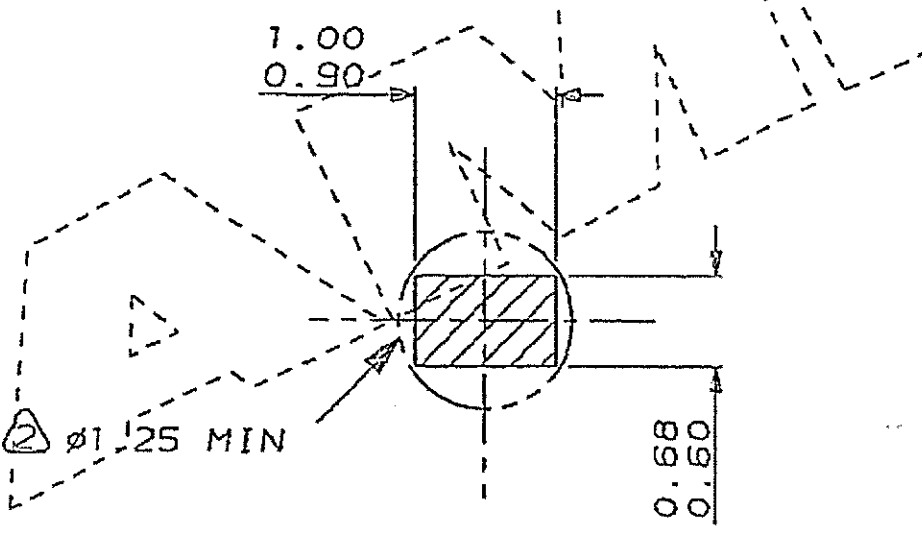
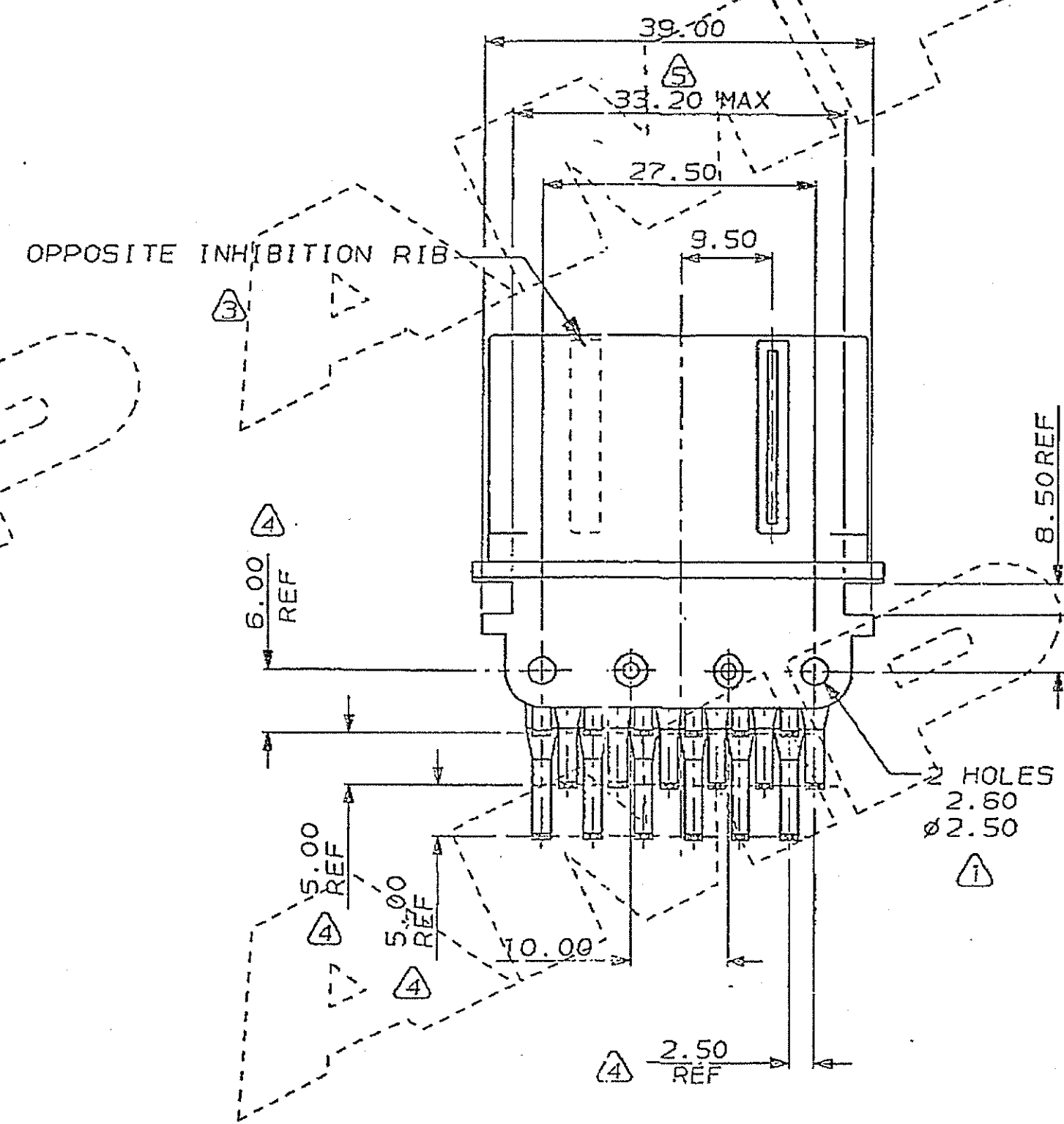
C.A.D. FILE CODE
S. C344103.E



Ø3.17 x 4.00 LONG BOSS



SCRAP VIEW OF PINS
SCALE 5:1



SCRAP VIEW OF PIN
DETAIL SHOWING MINIMUM
HOLE SIZE IN P.C.B (DOTTED)

NOTES:

- ① TO SUIT SCREW 5.00mm LONG
FLASH ACCEPTABLE AT END OF HOLE
- ② P.C.B. HOLE SIZE Ø 1.35 mm
1.25
- ③ PROVISION FOR OPPOSITE
INHIBITION RIB (IF REQUIRED)
- ④ THE POSITIONING OF THE P.C.B.
LEGS MUST BE SUCH THAT IT FITS
GAUGE NO. 38-347 WHICH HAS A
POSITIONAL TOLERANCE OF ±0.25
- ⑤ FLASH ACCEPTABLE AT TOOL
SPLIT LINE (0.1 MAX.)
- ⑥ TO BE MEASURED AT THE CORNERS.
DIMENSION AT C TO BE 19.90 MIN.
- ⑦ TO BE MEASURED AT THE CORNERS.

WAS CP86-076-08

TIN	LEGS, GOLD TABS	TEMPER 4 BRASS	IN-MOULDED TAB	344103-1
	BLACK	15% GLASS FILLED NYLON	HEADER MOULDING	
	FINISH	MATERIAL	DESCRIPTION	PART NUMBER
CUSTOMER DWG FOR REFERENCE ONLY		COPYRIGHT 1987 BY AHP OF GREAT BRITAIN LTD. ALL INTERNATIONAL RIGHTS RESERVED. ALL PRODUCTS MAY BE COVERED BY BRITISH AND FOREIGN PATENTS AND/OR PATENTS PENDING.		RELEASED FOR PUBLICATION 13/7/87
		TOLERANCES UNLESS OTHERWISE STATED	DR. <i>Neil White</i>	09 JUL 1987
E	EBA0-0049-03	RS	30-10-83	CH. RJS
D	EBA0-0047-03	RS	21-10-83	APP. RJS
C	GEN. TOL. WAS 0.50	C5626	9.10.80	
B	27.50 AND NOTE 7 ADDED	C5216	12-04-89	
A	DIMS. UPDATED	C5048	19-09-89	
Q	RELEASE FOR PRODUCTION	C4930	23-03-88	
REV	APPROVED	ECN	DATE	
		SCALE	LOC	SIZE
		2/1	E	A2
		DWG. NO.	C344103	REV
		SHEET	E	1/1

18 WAY HEADER (MK11)
FOR ECONOSEAL 3 (WIRE TO BOARD)

--0.TIF-10/30/03 7:35:10 AM
--0.TIF-10/21/03 6:43:55 AM