



CIRCUIT-BREAKER N-RELEASE 21 A,
 SIZE S0, STARTER PROTECTION,
 100 KA SCREW CONNECTION STANDARD BREAKING
 CAPACITY

General technical data:

| | | |
|---|----|-----------------|
| product brand name | | SIRIUS |
| product designation | | circuit breaker |
| Size of the circuit-breaker | | S0 |
| Degree of pollution | | 3 |
| Installation altitude / at a height over sea level / maximum | m | 2,000 |
| Protection class IP / on the front | | IP20 |
| Ambient temperature | | |
| • during storage | °C | -50 ... +80 |
| • during operating | °C | -20 ... +70 |
| • during transport | °C | 80 ... -50 |
| Resistance against shock | | 25g / 11 ms |
| Insulation voltage / rated value | V | 690 |
| Impulse voltage resistance / rated value | V | 6,000 |
| Active power loss / total / typical | W | 6 |
| Item designation | | |
| • according to DIN 40719 extendable after IEC 204-2 / according to IEC 750 | | Q |
| • according to DIN EN 61346-2 | | Q |
| Mechanical operating cycles as operating time / of the main contacts / typical | | 100,000 |

| | | |
|--|--|-----------------|
| Type of the driving mechanism / motor drive | | No |
| Design of the operating mechanism | | selector switch |
| Product function | | |
| • overload protection | | No |
| • phase disturbance recognition | | No |
| Product component | | |
| • auxiliary switch | | No |
| • undervoltage release mechanism | | No |
| • trip indicator | | No |
| Product extension / optional / motor drive | | No |

Main circuit:

| | | |
|--|-----|------------|
| Number of poles / for main current circuit | | 3 |
| type of voltage | | AC/DC |
| Operating voltage / at AC-3 / rated value / maximum | V | 690 |
| Operating current / at AC-3 / at 400 V / rated value | A | 1.6 |
| Service power / at AC-3 | | |
| • at 400 V / rated value | kW | 0.55 |
| Frequency of operation / at AC-3 / according to IEC 60947-6-2 / maximum | 1/h | 15 |
| Arrangement of electrical connectors / for main current circuit | | front side |
| Adjustable response current | | |
| • of the non-delayed short-circuit release | A | 21 ... 21 |
| Continuous current / rated value | A | 1.6 |
| Product extension / auxiliary switch | | Yes |

Auxiliary circuit:

| | | |
|---|--|---|
| Number of NC contacts / for auxiliary contacts / instantaneous switching | | 0 |
| Number of NO contacts / for auxiliary contacts / instantaneous switching | | 0 |
| Number of change-over switches / for auxiliary contacts | | 0 |

Inputs/ Outputs:

| | | |
|---------------------------------|--|---|
| Number of digital inputs | | 0 |
|---------------------------------|--|---|

Short-circuit:



| | | |
|--|----|----------------------|
| Breaking capacity limit short-circuit current (I_{cu}) | | |
| • at 400 V / rated value | kA | 100 |
| • at 500 V / rated value | kA | 100 |
| • at 690 V / rated value | kA | 100 |
| Design of the electrical connection / for auxiliary and control current circuit | | screw-type terminals |

| | | |
|--|--|----------|
| Design of the overcurrent release and short-circuit release | | magnetic |
|--|--|----------|

| Installation/mounting/dimensions: | | |
|--|----|--|
| Built in orientation | | any |
| Type of mounting | | screw and snap-on mounting onto 35 mm standard mounting rail according to DIN EN 50022 |
| Width | mm | 45 |
| Height | mm | 97 |
| Depth | mm | 96 |
| Distance, to be maintained, to the ranks assembly | | |
| • backwards | mm | 0 |
| • sideways | mm | 0 |
| Product function / removable terminal for auxiliary and control circuit | | No |

| Connections: | | |
|--|-----------------|--|
| Design of the electrical connection | | |
| • for main current circuit | | screw-type terminals |
| Type of the connectable conductor cross-section | | |
| • for main contacts | | |
| • solid | | 2x (1 ... 2.5 mm ²), 2x (2.5 ... 6 mm ²) |
| • stranded | | 2x (1 ... 2.5 mm ²), 2x (2.5 ... 6 mm ²) |
| • finely stranded | | |
| • with conductor end processing | | 2x (1 ... 2.5 mm ²), 2x (2.5 ... 6 mm ²) |
| • for AWG conductors / for main contacts | | 2x (14 ... 10) |
| Conductor cross section that can be connected / for main contacts | | |
| • solid | mm ² | 1 ... 6 |
| • stranded | mm ² | 1 ... 6 |
| • stranded wire | | |
| • with conductor end processing | mm ² | 1 ... 6 |
| AWG number / as coded connectable conductor cross-section | | |
| • for main contacts | | 14 ... 10 |

Certificates/approvals:

| | |
|--|---|
| General Product Approval | Test Certificates |
|  CSA | ROSTEST |
| |  UL |

| | |
|--|---|
| Shipping Approval | other |
|  ABS |  BUREAU VERITAS |
|  DNV |  GL |
| | Manufacturer |
| | other |

Safety:

| | |
|--|-------------|
| Protection against electrical shock | finger-safe |
|--|-------------|

Further information:

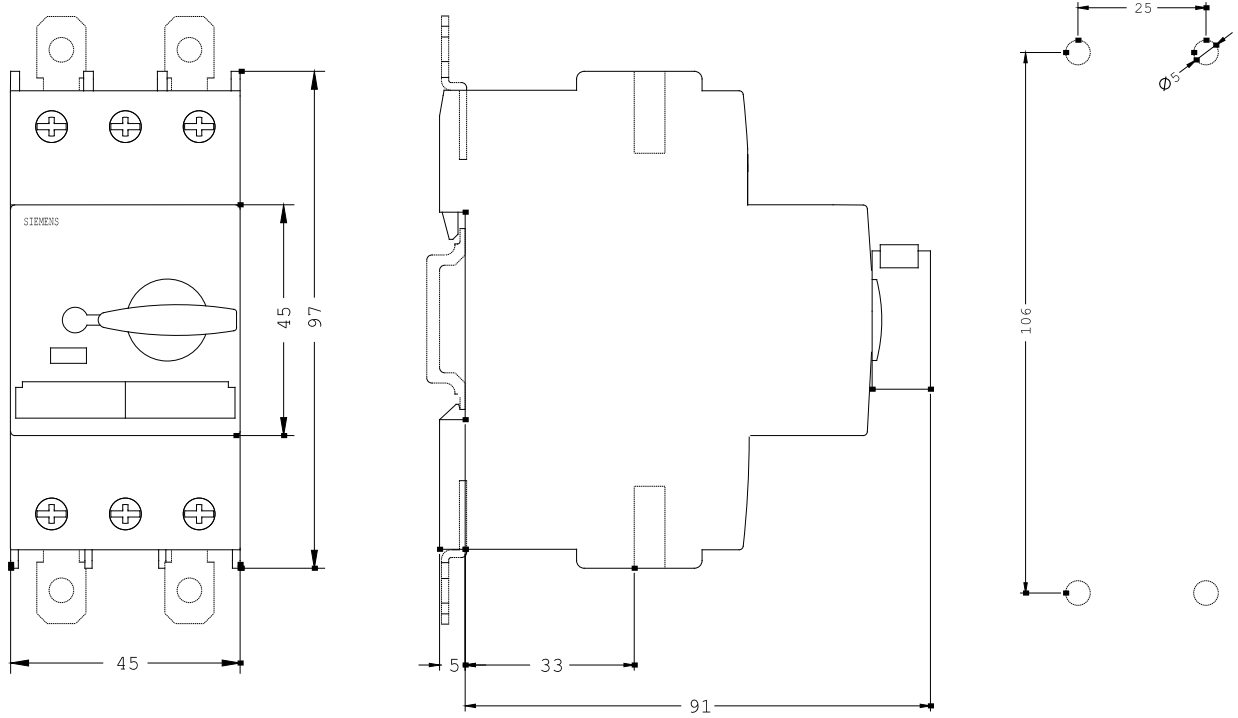
Information- and Downloadcenter (Catalogs, Brochures,...)
<http://www.siemens.com/industrial-controls/catalogs>

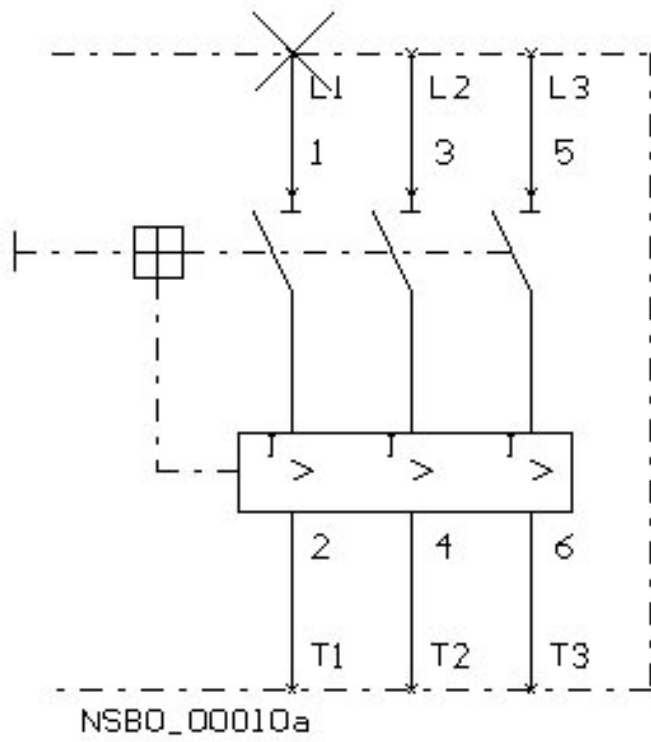
Industry Mall (Online ordering system)
<http://www.siemens.com/industrial-controls/mall>

CAX-Online-Generator
<http://www.siemens.com/cax>

Service&Support (Manuals, Certificates, Characteristics, FAQs,...)
<http://support.automation.siemens.com/WW/view/en/3RV1321-1AC10/all>

Image database (product images, 2D dimension drawings, 3D models, device circuit diagrams, ...)
http://www.automation.siemens.com/bilddb/cax_en.aspx?mlfb=3RV1321-1AC10





last change:

Feb 6, 2012