



zQSFP+/QSFP28

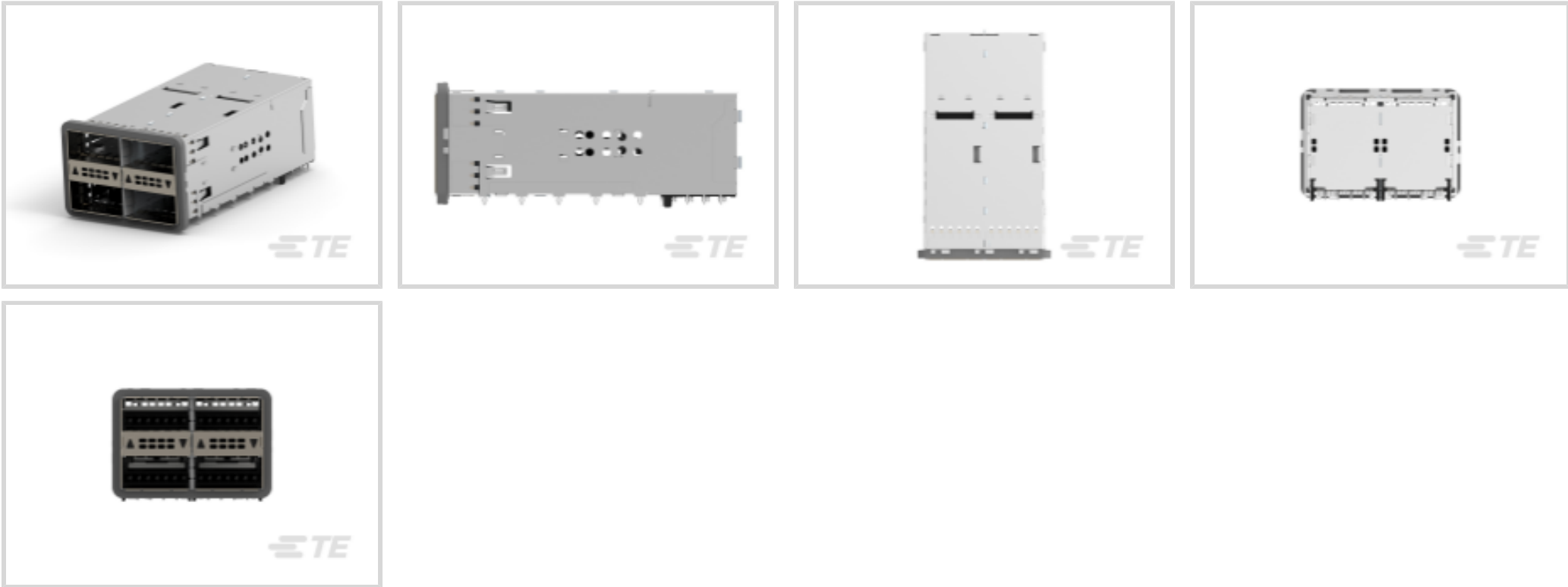
TE Internal #: 2227225-2

zQSFP+, Cage Assembly with Integrated Connector, .8mm [.032in]

Centerline, Sealable, Signal, Operating Temperature Range -40 – 85 °C [-40 – 185 °F]

[View on TE.com >](#)

Connectors > Pluggable IO Connectors & Cages



Form Factor: **zQSFP+**

Pluggable I/O Product Type: **Cage Assembly with Integrated Connector**

Centerline (Pitch): **.8 mm [.032 in]**

Sealable: **Yes**

Circuit Application: **Signal**

Features

Product Type Features

Cage Type	Stacked
Form Factor	zQSFP+
Pluggable I/O Product Type	Cage Assembly with Integrated Connector
Sealable	Yes

Configuration Features

Number of Rear EONs per Port Column	3
Number of Positions	152
Number of Ports	4
Port Matrix Configuration	2 x 2

Electrical Characteristics

Data Rate (Max)	28 Gb/s
-----------------	---------

Contact Features

Contact Current Rating (Max)	.5 A
Contact Underplating Material	Tin



Contact Mating Area Plating Material	Gold (Au)
PCB Contact Termination Area Plating Material	Gold
Contact Mating Area Plating Material Thickness	.76 µm[30 µin]

Termination Features

Termination Method to PCB	Through Hole - Press-Fit
Termination Post & Tail Length	2 mm[.079 in]

Housing Features

Cage Material	Nickel Silver
Centerline (Pitch)	.8 mm[.032 in]

Dimensions

PCB Thickness (Recommended)	1.57 mm[.062 in]
-----------------------------	------------------

Usage Conditions

Operating Temperature Range	-40 – 85 °C[-40 – 185 °F]
-----------------------------	---------------------------

Operation/Application

Pluggable I/O Applications	SFP+ Stacked Belly-to-Belly
Heat Sink Compatible	No
Circuit Application	Signal

Industry Standards

UL Flammability Rating	UL 94V-0
------------------------	----------

Packaging Features

Packaging Method	Box & Tray
------------------	------------

Other

Included Lightpipe	Yes
EMI Containment Feature Type	Elastomeric Gasket

Product Compliance

[For compliance documentation, visit the product page on TE.com>](#)

EU RoHS Directive 2011/65/EU	Compliant
EU ELV Directive 2000/53/EC	Compliant
China RoHS 2 Directive MIIT Order No 32, 2016	No Restricted Materials Above Threshold
EU REACH Regulation (EC) No. 1907/2006	Current ECHA Candidate List: JAN 2025 (247)




Not Yet Reviewed

Halogen Content	Low Bromine/Chlorine - Br and Cl < 900 ppm per homogenous material. Also BFR /CFR/PVC Free
Solder Process Capability	Not applicable for solder process capability

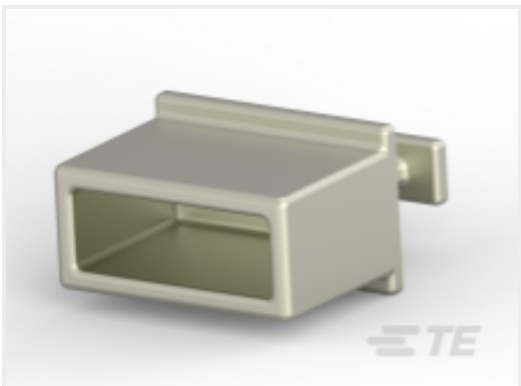
Product Compliance Disclaimer

This information is provided based on reasonable inquiry of our suppliers and represents our current actual knowledge based on the information they provided. This information is subject to change. The part numbers that TE has identified as EU RoHS compliant have a maximum concentration of 0.1% by weight in homogenous materials for lead, hexavalent chromium, mercury, PBB, PBDE, DBP, BBP, DEHP, DIBP, and 0.01% for cadmium, or qualify for an exemption to these limits as defined in the Annexes of Directive 2011/65/EU (RoHS2). Finished electrical and electronic equipment products will be CE marked as required by Directive 2011/65/EU. Components may not be CE marked. Additionally, the part numbers that TE has identified as EU ELV compliant have a maximum concentration of 0.1% by weight in homogenous materials for lead, hexavalent chromium, and mercury, and 0.01% for cadmium, or qualify for an exemption to these limits as defined in the Annexes of Directive 2000/53/EC (ELV). Regarding the REACH Regulations, TE’s information on SVHC in articles for this part number is still based on the European Chemical Agency (ECHA) ‘Guidance on requirements for substances in articles’(Version: 2, April 2011), applying the 0.1% weight on weight concentration threshold at the finished product level. TE is aware of the European Court of Justice ruling of September 10th, 2015 also known as O5A (Once An Article Always An Article) stating that, in case of ‘complex object’, the threshold for a SVHC must be applied to both the product as a whole and simultaneously to each of the articles forming part of its composition. TE has evaluated this ruling based on the new ECHA “Guidance on requirements for substances in articles” (June 2017, version 4.0) and will be updating its statements accordingly.

Compatible Parts



TE Part # 1551920-2
zQSFP+ connector assembly



TE Part # 1888810-2
EMI/Dust Cover, XFP And QSFP

Also in the Series | zQSFP+/QSFP28



Heat Sinks(7)

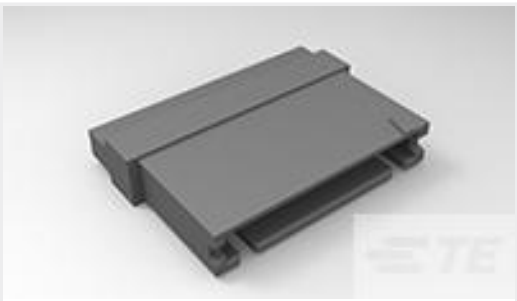


Pluggable IO Connectors & Cages(424)

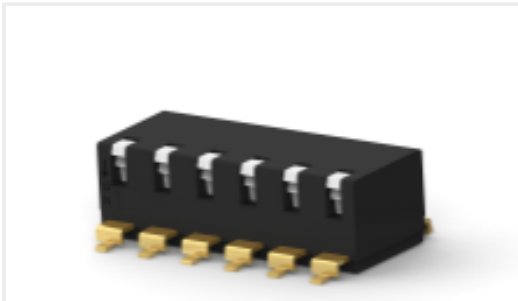


QSFP, QSFP+ & zQSPF+(424)

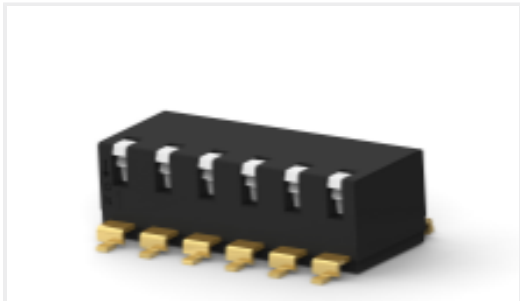
Customers Also Bought



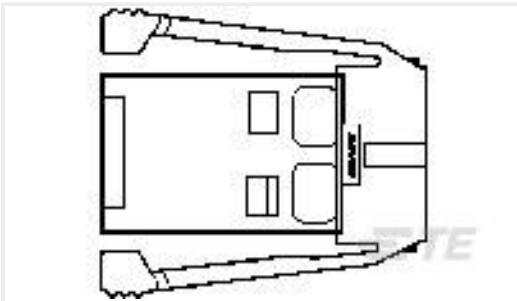
TE Part #1-485893-8
020 HOUSING FFC PIN 100CL SR



TE Part #2319764-8
E STACK PIANO 6P G SHORT TUBE PD ON



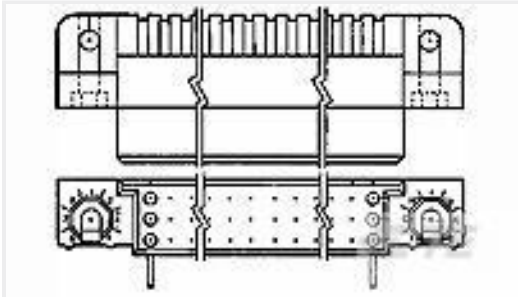
TE Part #3-2319764-8
E STACK PIANO 6P G SHORT T&R PD ON



TE Part #5-520532-2
6 SDL RND PLUG ASSY 36 SERIES



TE Part #6-103956-0
2X11 MTE RCPT SR LATCH .100CL



TE Part #5532431-1
ASSY,RECPT,R.ANGLE,HDI,LEAD-FR



TE Part #2212341-1
FORGE, ASSY SCKT, 2#0-2#4-2#8-2#12-2#22



TE Part #YDTS26F21-11PAC001
PLUG ASSY



TE Part #YDTS26F21-41SAC001
PLUG ASSY



TE Part #103949-1
8X2 MTE SHRD PIN SR LTCH .100

Documents

CAD Files

3D PDF

3D

Customer View Model

ENG_CVM_CVM_2227225-2_A.2d_dxf.zip

English

Customer View Model

ENG_CVM_CVM_2227225-2_A.3d_igs.zip

English

Customer View Model

ENG_CVM_CVM_2227225-2_A.3d_stp.zip

English

By downloading the CAD file I accept and agree to the [Terms and Conditions](#) of use.

Datasheets & Catalog Pages

QSFP28/56 and zQSFP+ Interconnects

English

Product Specifications



Product Specification

English