



**Part Number :** [22552242](#)

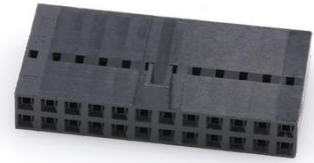
**Product Description :** 2.54mm Pitch SL Crimp Housing, Dual Row, Version B, Polarized, 24 Circuits, Black

**Series Number :** 70450

**Status :** Active

**Product Category :** Connector Housings

**Engineering Number :** 704500060



---

## Documents & Resources

### Drawings

[022552242\\_sd.pdf](#)

[PK-70450-100-001.pdf](#)

### 3D Models and Design Files

[STEP AP242](#)

[SOLIDWORKS](#)

[Creo](#)

### Specifications

[PS-70058-001.pdf](#)


[PS-70400-001.pdf](#)

[TS-70058-001-001.pdf](#)

---

## Product Environment Compliance

### Compliance

|                    |  |
|--------------------|--|
| GADSL/IMDS         | Not Relevant   |
| China RoHS         | <br>per SJ/T 11365-2006 |
| EU ELV             | Not Relevant   |
| Low-Halogen Status | Not Low-Halogen per IEC<br>61249-2-21  |
| REACH SVHC         | Not Contained per D(2025)4165-DC<br>(25 June 2025)   |
| EU RoHS            | Compliant per EU 2015/863  |

## Compliance Statements

- EU RoHS
- REACH SVHC
- Low-Halogen

## Industry Documents

- IPC 1752A Class C
- IPC 1752A Class D
- Molex Product Compliance Declaration
- IEC-62474
- chemSHERPA (xml)

## Substances of Interest

- PFAS

## EU RoHS Certificate of Compliance

## Additional Product Compliance Information

---

## Part Details

### General

|              |   |
|--------------|---|
| Status       | Active  |
| Category     | Connector Housings  |
| Series       | 70450   |
| Description  | 2.54mm Pitch SL Crimp Housing, Dual Row, Version B, Polarized, 24 Circuits, Black |
| Application  | Signal, Wire-to-Board   |
| Comments     | Version B   |
| Product Name | SL  |
| UPC          | 800754249416  |

### Agency

|     |         |
|-----|---------|
| CSA | LR19980 |
| UL  | E29179  |

### Physical

|                    |       |
|--------------------|-------|
| Breakaway          | No    |
| Circuits (maximum) | 24    |
| Color - Resin      | Black |
| Flammability       | 94V-0 |

|                               |                |
|-------------------------------|----------------|
| Gender                        | Receptacle     |
| Glow-Wire Capable             | No             |
| Material - Resin              | Polyester      |
| Net Weight                    | 2.100/g        |
| Number of Rows                | 2              |
| Packaging Type                | Bag            |
| Panel Mount                   | No             |
| Pitch - Mating Interface      | 2.54mm         |
| Stackable                     | No             |
| Temperature Range - Operating | -40° to +105°C |

### Solder Process Data

|                              |     |
|------------------------------|-----|
| Lead-Free Process Capability | N/A |
|------------------------------|-----|

---

### Mates With / Use With

#### Mates with Part(s)

| Description                                       | Part Number  |
|---|--------------|
| C-Grid Right-Angle Dual Row Headers               | <u>70229</u> |
| C-Grid Right-Angle, Dual Row, Low Profile Headers | <u>70247</u> |
| C-Grid Vertical Dual Row Breakaway Headers        | <u>70280</u> |
| C-Grid Vertical, Dual Row, Low Profile Headers    | <u>70246</u> |

#### Use with Part(s)

| Description         | Part Number  |
|---------------------|--------------|
| SL Female Terminals | <u>70058</u> |
| SL Female Terminals | <u>71851</u> |