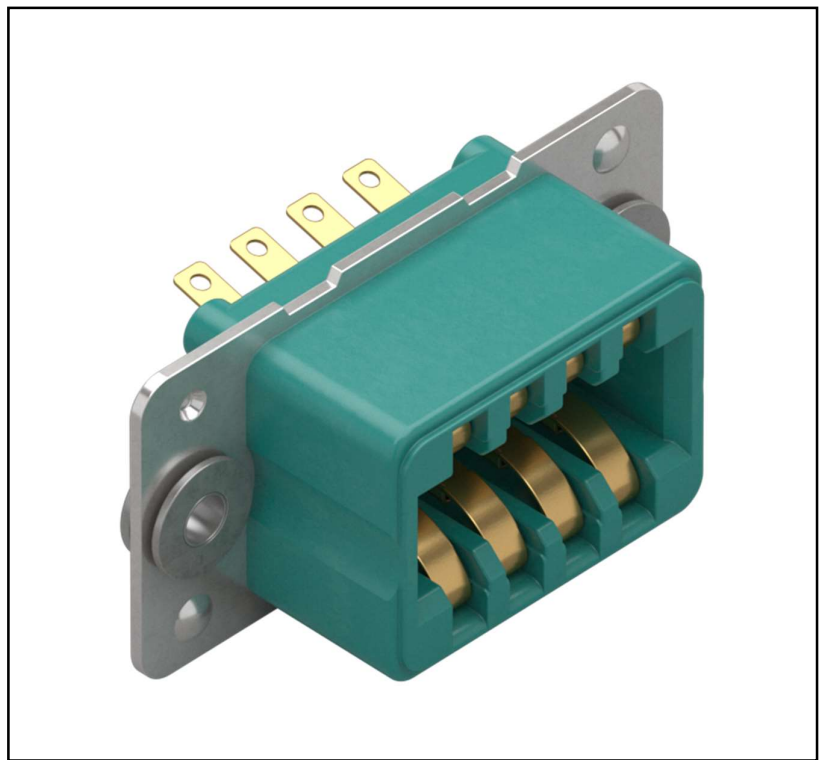


Features

- Rugged construction
- Blind-mate, 180° polarized pre-mating insulator
- Low mating engagement force
- Excellent current carrying characteristics
- Available in four sizes with 8, 16, 24 and 32 contacts
- 5 A current rating, continuous across all contacts
- Gold plated contacts
- Working voltage 800 V DC or AC peak
- Operating temperature range -55°C to +125°C
- UL-94 V-0 rated flame-retardant mouldings

RS PRO, 8 way, Female Connector

RS Stock No.: 0434496



RS Professionally Approved Products bring to you professional quality parts across all product categories. Our product range has been tested by engineers and provides a comparable quality to the leading brands without paying a premium price.

Product Description

This heavy-duty rectangular rack and panel connector system is particularly suited for use in rugged conditions. Designed as a panel-mount connector, they feature a pre-mating, polarised insulator with integral float-mount bushes and low insertion force contacts which means the plug and socket will self-align. As a result, the connectors are ideally suited for inaccessible blind-mate applications for Line Removable Units (LRUs).

General Specifications

Insulators	Diallyl-Phthalate (DAP), UL-94 V-0 rated flame-retardant
Contact	Copper alloy plated hard acid gold
Mounting plates	Stainless Steel
Float-mount bushes	Mild steel bright nickel plate

Mechanical Specifications

Mechanical Operations	500
Insertion and withdrawal force per contact pair	2.25 N max / 0.75 N min
Climatic category	55/125/56

Electrical Specifications

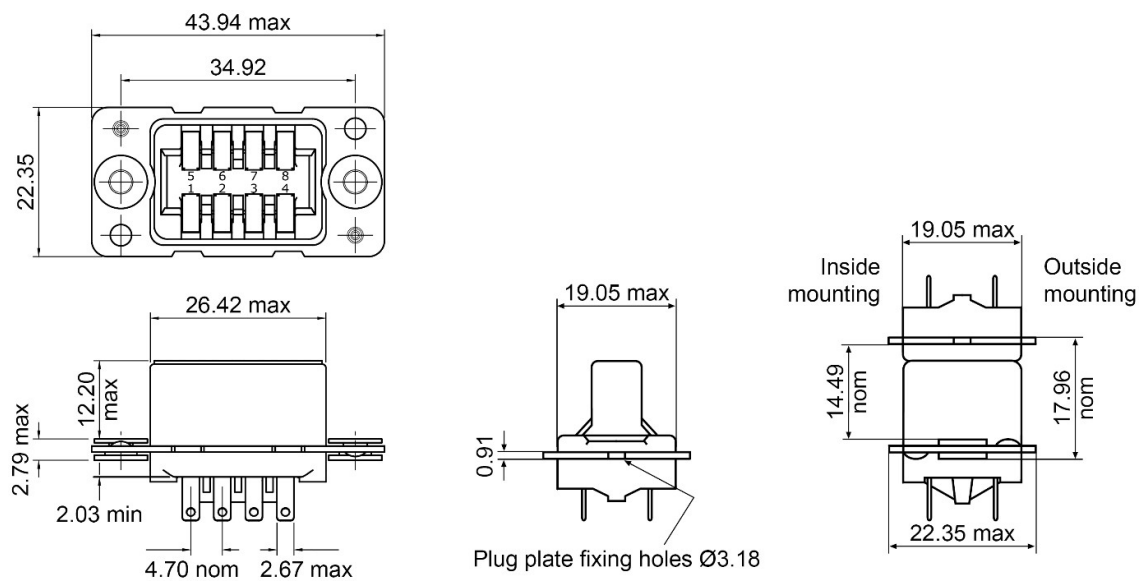
Maximum current rating	5 A all contacts simultaneously at 100°C
Working voltage DC or AC peak	800 V
Proof voltage DC or AC peak	3.5 kV
Contact resistance initially	5 mΩ max
Contact resistance after conditioning	10 mΩ max
Insulation resistance initially	10 ⁵ MΩ min
Insulation resistance after conditioning	10 ⁴ MΩ min
Number of ways	8, Female

Similar Products

Stock No.	Product Name	Number of ways
0434498	RS PRO, 16 way, Female Connector	16
0434499	RS PRO, 24 way, Female Connector	24
0434500	RS PRO, 32 way, Female Connector	32

Mating half part number: 0434491

Dimensions



Mounting Details

