

LinkRunner™ Network Multimeter

Frontline PC and network technicians are the first line of defense against problems at the physical and link layers of the network. Typical problems the technician checks for include determining whether the drop is active, whether they can "ping" other network resources, finding any cable problems and tracing the cable path.

Designed for the frontline technician, LinkRunner improves troubleshooting and escalation accuracy by helping to quickly identify if a problem is in the network or the PC NIC. LinkRunner performs essential tests for troubleshooting and solving problems in the physical and link layers, the source of 80% of network problems.

Instant vision into the network drop. That's Network SuperVision.™ That's Fluke Networks' promise to you.

LinkRunner helps you answer questions like:

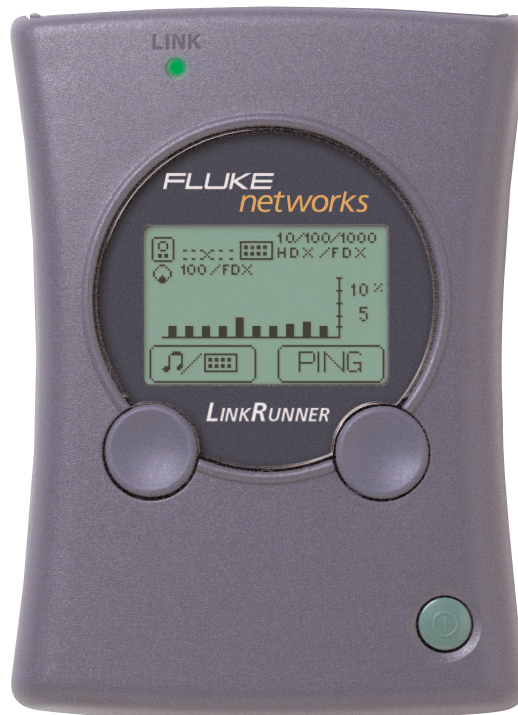
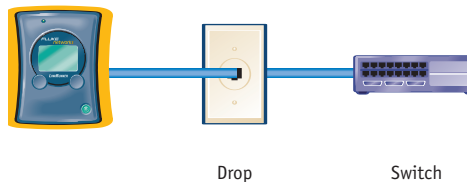
- Is this an active Ethernet port?
- What speed/duplex is the hub/switch/PC NIC configured for?
- Am I seeing traffic from this connection?
- Is the PC NIC okay?
- Where does the cable go?
- Am I connected to the Internet?

Perform the following tests quickly

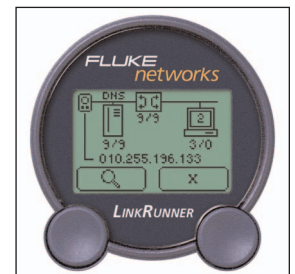
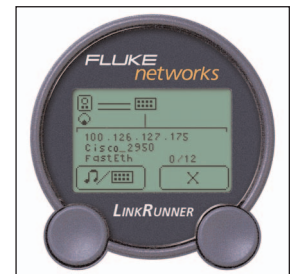
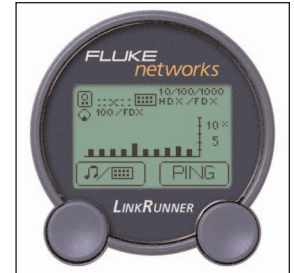
Link – determine whether the drop is active, identify its speed, duplex capabilities, service type (e.g., Ethernet, Token ring, Telco), and location on a switch (supports Cisco and Extreme Discovery Protocols). Users can then reconfigure these settings on the hub or NIC as needed. Now detects up to Gigabit Ethernet.

Length – determine whether the cable length is within specifications, what type it is (straight or crossover), and whether it has any faults. These tests, which work for both structured and patch cables, eliminate the need for a separate cable tester.

Ping – verify connectivity to key network resources and determine whether a PC NIC is responding.

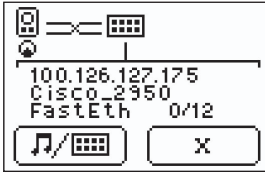


Actual size.



Quickly verify and troubleshoot network drops with this essential, personal tool.

CDP/EDP – precisely determine where a network drop is connected at the far end (available for Cisco and Extreme switches). Eliminates guesswork that can arise from toning or blinking the switch.



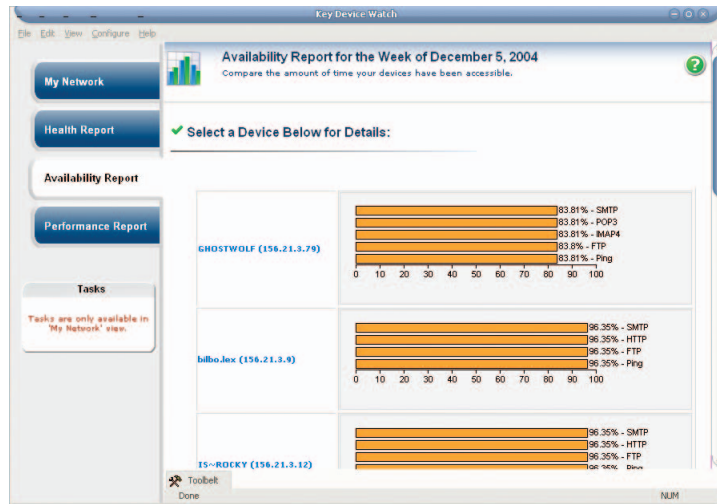
Cable ID – identify unknown cabling paths using the optional Cable ID by seeing which numbered plug is on the other end of the wire.



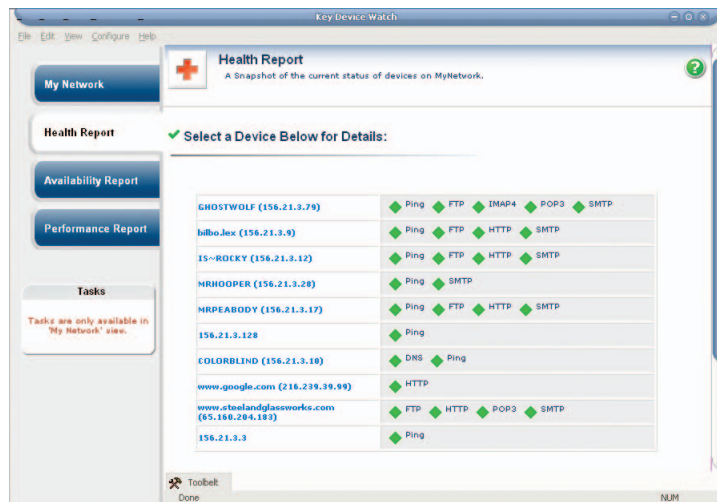
Proactively monitor and reactively troubleshoot

WhatsUp Key Device Watch software is an easy-to-use solution that maps the network, monitors key devices, and alerts of failures before they become catastrophes. Key Device Watch software, LinkRunner and your knowledge give you a powerful combination to help keep your resources up and running.

Key Device Watch monitors up to 10 networked resources, waiting for something to go wrong. When something does go wrong with your networked devices, a notification is sent to the proper party letting them know where to go and what to fix. Key Device Watch doesn't solve the problem but alerts those who can. That information combined with the handheld network tester allows the troubleshooter to quickly fix the problem.



Availability Report



Health Report

WhatsUp Key Device Watch:

- Discovers devices automatically
- Monitors key devices 24x7
- Notifies troubleshooter with problem location and type
- Speeds-up the troubleshooting process
- Provides trend analysis of network diagnostics

Order the software bundled with LinkRunner and save on this powerful combination over individual purchases.



Ordering Information

Model Name	Description
LINKRUNNER	LinkRunner Network Multimeter
LR-KDW	LinkRunner Network Multimeter packaged with Key Device Software
LINKRUNNER-KIT	LinkRunner extended test kit packaged with Key Device Software (Includes LinkRunner and all accessories listed below including custom carrying case)
KDW-CD	Standalone mini-CD with Key Device Software
CABLE ID KIT	Cable ID Kit (numbers 1-8)
LRUN-WM	Wiremap Adapter
RJ-45 COUPLER	RJ-45 Coupler
MT-8200-53A	IntelliTone 100 Probe
CLIP SET	Clip adapter to test unterminated cables
BATT-AA-NIMH	NiMH Battery Pack
NT-BATT-CHG	NiMH Battery Charger
LR-CASE	Custom Carrying Case for LinkRunner Extended Test Kit
PC-INSP	PC Inspector

Specifications

Media access	10BASE-T and 100BASE-TX
Identifies	10BASE-T, 100BASE-TX (full or half-duplex), Gigabit Ethernet, Token Ring, Telco, Cable ID, un-powered PC or hub, Auto-MDIX ports and Auto-Negotiation or strapped port
Cable tests	Length, open, short, splits, wiremap, crossed, straight through
Ports	RJ-45 LAN, RJ-45 Wiremap
Interface	Push button navigation of icon/menu driven view
Power	2 AA batteries standard. Optional NiMH batteries and battery charger available. Approximately 20 hours continuous use with 4 hours of pinging.
Dimensions	2.75"w x 3.75"h x 1.25"d (6.98cm x 9.52cm x 3.17cm)
Weight	4.5 oz/128 grams with batteries installed
Warranty	One year

FREE Belt clip holster when you register your LinkRunner



Visit www.flukenetworks.com/linkrunner and www.flukenetworks.com/keydevice for more information.

LinkRunner KDW

- LinkRunner Network Multimeter
- Key Device Watch Software
- Quick Reference User Guide
- 2 AA alkaline batteries



LinkRunner Extended Test Kit Includes:

All available accessories and the custom carrying case

NETWORK SUPERVISION

Fluke Networks
P.O. Box 777, Everett, WA USA 98206-0777

Fluke Networks operates in more than 50 countries worldwide. To find your local office contact details, go to www.flukenetworks.com/contact.

©2005 Fluke Corporation. All rights reserved.
Printed in U.S.A. 10/2005 1995782 D-ENG-N Rev E