

DIN RAIL ENCLOSURES

DIN Rail Instrument Enclosures

UNIVERSAL ENCLOSURES

Low Profile and Deep Profile DIN Rail Mount Instrument Boxes

HAND HELD CASES

HEAVY DUTY ENCLOSURES

DIN RAIL ENCLOSURES

INTERFACE SUPPORTS

ELECTRICAL ENCLOSURES

DIECAST & METAL ENCLOSURES

DESKTOP & INSTRUMENT CASES

POTTING BOXES

19" ENCLOSURES

19" CABINETS

DEVELOPMENT BOARD ENCLOSURES

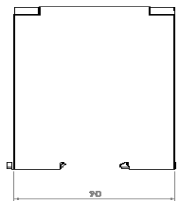
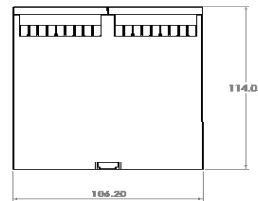
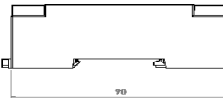
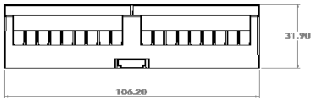
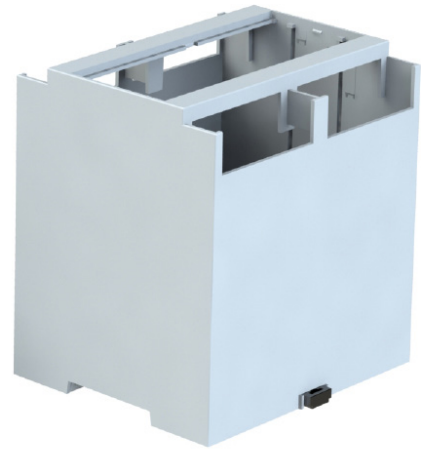
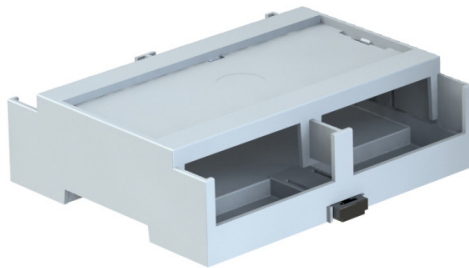
CUSTOM SIZED ENCLOSURES

CUSTOM SERVICES

- Designed for 35mm DIN Rail Mounting
- DIN Clips can also be used for surface mounting the housing
- Multiple snap-in PCB positions available (horizontal & vertical)
- X2 pillars in the base for screw fixing PCB
- Snap-fit Top Covers (See CNMB)
- Snap-fit Terminal Guards (See CNMB)
- Open Top and Solid Top versions available
- Low Profile and Deep Profile variants
- Enclosure base gives isolation from DIN Rail
- Customisation options include cutouts, holes & vents
- Surfaces, Covers and Terminal guards easily customised and printed
- Moulded in UL94-V0 Polycarbonate

SPECIFICATION

Material	Base & Body- UL94-V0, Polycarbonate Clips- POM
Standard colours	RAL 7035
Standard unit includes	Body, base & clips
Accessories	Terminal Guards and Covers (See CNMB)



PART NO.	DESCRIPTION
CDIB/6/L2	CDIB, Size 6, Low Profile, Open Top, Open Sides
CDIB/6ST/L2	CDIB, Size 6, Low Profile, Solid Top, Open Sides
CDIB/6/D2	CDIB, Size 6, Deep Profile, Open Top, Open Sides
CDIB/6ST/D2	CDIB, Size 6, Deep Profile, Solid Top, Open Sides

Kits

- Each kit contains one grey panel cover and a selection of solid and perforated terminal guards.



COMPONENT KIT PART NO.	BODY	BASE	COVER /PG	TERMINAL /TG508P	GUARD /TGS
CDIB/6/L2/KIT	1	1	1	4	2
CDIB/6/D2/KIT	1	1	1	4	2
CDIB/6ST/D2/KIT	1	1	0	4	2
CDIB/6ST/L2/KIT	1	1	0	4	2