



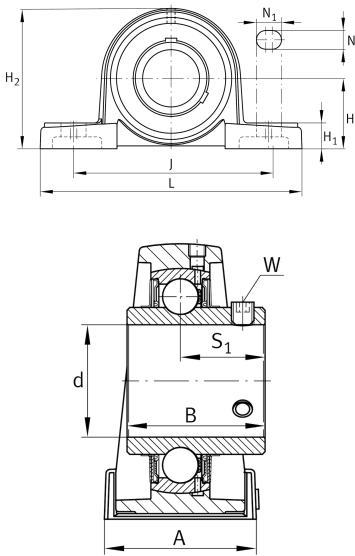
FAG

UCP211

Plummer block housing unit

Plummer block housing units UCP, cast iron housing, with long base, radial insert ball bearing with grub screws in inner ring, RSR seals

Technical information



Your current product variant

Material	GG	Grey cast iron
Housing clearance	J7	Normal swivel torque

Main Dimensions & Performance Data

d	55 mm	Bore diameter
L	219 mm	Length total
H 2	126 mm	Height
≈m	3.588 kg	Weight

Mounting dimensions

J	171 mm	Distance fixing bore
N	20 mm	Width (slot)
N 1	25 mm	Length (slot)

Dimensions

H	63.5 mm	Distance shaft axis
A	60 mm	Width (base)
H 1	23 mm	Heigth (base)
B	55.6 mm	Width
S 1	33.4 mm	Distance of raceway to locking collar
Q	M6	Connection thread for lubrication



Additional information

P211	Housing
UC211	Bearing designation

Temperature range

T _{min}	-20 °C	Operating temperature min.
T _{max}	120 °C	Operating temperature max.