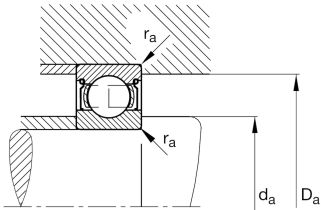
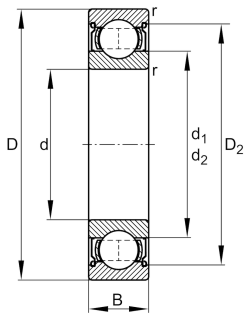


**FAG****626-Z-HLN**

Deep groove ball bearing

Deep groove ball bearing 62...-Z, single row, shield, steel sheet metal cage

Technical information



Your current product variant

Logistical code	HLN	-
Sealing	Z	Non-contact shield on one Side
Cage	J	Steel sheet metal
Tolerance class	PN	Normal (PN)
Dimensional / heat stabilization	SN	Rings dimensional stabilized up to 120°
Lubricant	Without	Bearing not greased
Radial internal clearance	CN (Group N)	Normal internal clearance
Bore type	Z	Cylindrical

Main Dimensions & Performance Data

d	6 mm	Bore diameter
D	19 mm	Outside diameter
B	6 mm	Width
C _r	2,610 N	Basic dynamic load rating, radial
C _{0r}	1,050 N	Basic static load rating, radial
C _{ur}	65 N	Fatigue load limit, radial
n _G	53,000 1/min	Limiting speed
n _{gr}	30,500 1/min	Reference speed
≈m	7.24 g	Weight



Mounting dimensions

$d_{a\min}$	8.4 mm	Minimum diameter shaft shoulder
$D_{a\max}$	16.6 mm	Maximum diameter of housing shoulder
$r_{a\max}$	0.3 mm	Maximum fillet radius

Dimensions

r_{\min}	0.3 mm	Minimum chamfer dimension
D_2	16.7 mm	Caliber diameter outer ring
d_2	9 mm	Caliber diameter inner ring

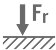





Temperature range

T_{\min}	-30 °C	Operating temperature min.
T_{\max}	120 °C	Operating temperature max.

Calculation factors

f_0	12.4	Calculation factor
-------	------	--------------------

Characteristics

	Radial load
	Axial load in one direction
	Axial load in two directions
	Grease Lubrication
	Oil Lubrication
	Sealed on one side