



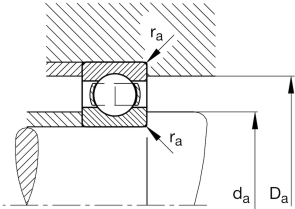
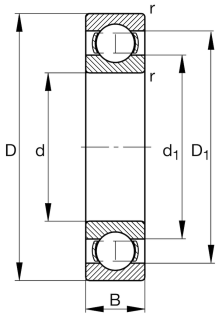
FAG

6307-C4

Deep groove ball bearing

Deep groove ball bearing 63, single row, steel
sheet metal cage

Technical information



Your current product variant

| | | |
|----------------------------------|--------------|---|
| Sealing | Without | Not sealed |
| Cage | JN | Steel sheet metal |
| Tolerance class | PN | Normal (PN) |
| Dimensional / heat stabilization | SN | Rings dimensional stabilized up to 120° |
| Lubricant | Without | Bearing not greased |
| Radial internal clearance | C4 (Group 4) | Internal clearance larger than C3 |
| Bore type | Z | Cylindrical |

Main Dimensions & Performance Data

| | | |
|-----------------|--------------|-----------------------------------|
| d | 35 mm | Bore diameter |
| D | 80 mm | Outside diameter |
| B | 21 mm | Width |
| C _r | 35,500 N | Basic dynamic load rating, radial |
| C _{0r} | 19,100 N | Basic static load rating, radial |
| C _{ur} | 1,290 N | Fatigue load limit, radial |
| n _G | 12,300 1/min | Limiting speed |
| n _{gr} | 9,900 1/min | Reference speed |
| ≈m | 0.446 kg | Weight |



Mounting dimensions

| | | |
|--------------|--------|--------------------------------------|
| $d_{a\ min}$ | 44 mm | Minimum diameter shaft shoulder |
| $D_{a\ max}$ | 71 mm | Maximum diameter of housing shoulder |
| $r_{a\ max}$ | 1.5 mm | Maximum fillet radius |

Dimensions

| | | |
|------------|---------|------------------------------|
| r_{\min} | 1.5 mm | Minimum chamfer dimension |
| D_1 | 65.6 mm | Shoulder diameter outer ring |
| D_2 | 67.6 mm | Caliber diameter outer ring |
| d_1 | 49.3 mm | Shoulder diameter inner ring |

Temperature range

| | | |
|------------|--------|----------------------------|
| T_{\min} | -30 °C | Operating temperature min. |
| T_{\max} | 120 °C | Operating temperature max. |

Calculation factors

| | | |
|-------|------|--------------------|
| f_0 | 13.1 | Calculation factor |
|-------|------|--------------------|

Characteristics

| | |
|--|------------------------------|
| | Radial load |
| | Axial load in one direction |
| | Axial load in two directions |
| | Grease Lubrication |
| | Oil Lubrication |
| | Not sealed |