



Connectors > Rectangular Connectors > Standard Rectangular Connectors



Connector Product Type: **Housing**

Connector & Housing Type: **Receptacle**

Termination Method to Wire & Cable: **Crimp**

Connector System: **Wire-to-Board**

Contact Mating Area Plating Material: **Silver (Ag)**

Features

Product Type Features

Connector Product Type	Housing
Connector & Housing Type	Receptacle
Connector System	Wire-to-Board
Sealable	No
Connector & Contact Terminates To	Wire & Cable

Configuration Features

Number of Power Positions	2
Number of Signal Positions	0
Number of Positions	2
Number of Rows	1

Electrical Characteristics

Operating Voltage	500 VAC
-------------------	---------

Body Features

Primary Product Color	Black
-----------------------	-------

Contact Features



Contact Type	Receptacle
Contact Mating Area Plating Material Thickness	.8 μm[76.2 μin]
Contact Mating Area Plating Material	Silver (Ag)
Contact Retention Within Housing	With
Contact Current Rating (Max)	40 A

Termination Features

Termination Method to Wire & Cable	Crimp
------------------------------------	-------

Mechanical Attachment

Connector Mounting Type	Cable Mount (Free-Hanging)
-------------------------	----------------------------

Housing Features

Housing Material	PBT GF
Centerline (Pitch)	7.8 mm[.307 in]

Dimensions

Wire Size	12 – 14 AWG
Row-to-Row Spacing	7.8 mm[.307 in]

Usage Conditions

Operating Temperature Range	-40 – 125 °C[-40 – 257 °F]
-----------------------------	----------------------------

Operation/Application

Circuit Application	Power
---------------------	-------

Industry Standards

Glow Wire Rating	Standard Part - Not Glow Wire
UL Flammability Rating	UL 94V-0

Packaging Features

Packaging Method	Tray
------------------	------

Product Compliance

For compliance documentation, visit the product page on TE.com>

EU RoHS Directive 2011/65/EU	Compliant
EU ELV Directive 2000/53/EC	Compliant
China RoHS 2 Directive MIIT Order No 32, 2016	No Restricted Materials Above Threshold
EU REACH Regulation (EC) No. 1907/2006	Current ECHA Candidate List: JAN 2025 (247)



Candidate List Declared Against: JAN 2025 (247)  
Does not contain REACH SVHC

Halogen Content	Not Low Halogen - contains Br or Cl > 900 ppm.
Solder Process Capability	Not applicable for solder process capability

Product Compliance Disclaimer

This information is provided based on reasonable inquiry of our suppliers and represents our current actual knowledge based on the information they provided. This information is subject to change. The part numbers that TE has identified as EU RoHS compliant have a maximum concentration of 0.1% by weight in homogenous materials for lead, hexavalent chromium, mercury, PBB, PBDE, DBP, BBP, DEHP, DIBP, and 0.01% for cadmium, or qualify for an exemption to these limits as defined in the Annexes of Directive 2011/65/EU (RoHS2). Finished electrical and electronic equipment products will be CE marked as required by Directive 2011/65/EU. Components may not be CE marked. Additionally, the part numbers that TE has identified as EU ELV compliant have a maximum concentration of 0.1% by weight in homogenous materials for lead, hexavalent chromium, and mercury, and 0.01% for cadmium, or qualify for an exemption to these limits as defined in the Annexes of Directive 2000/53/EC (ELV). Regarding the REACH Regulation, the information TE provides on SVHC in articles for this part number is based on the latest European Chemicals Agency (ECHA) 'Guidance on requirements for substances in articles' posted at this URL: <https://echa.europa.eu/guidance-documents/guidance-on-reach>

Compatible Parts



TE Part # 1982295-1  
ELCON MINI 2P RA HEADER, W /CODING



TE Part # 2042274-1  
ELCON MINI 2P VERT HEADER,W/ CODING




TE Part # 2042274-8  
ELCON MINI 2P VERT HEADER,PRESS-FIT,W/HD



TE Part # 2042274-5  
ELCON MINI 2P VERT HEADER,TRAY, W/ CODING

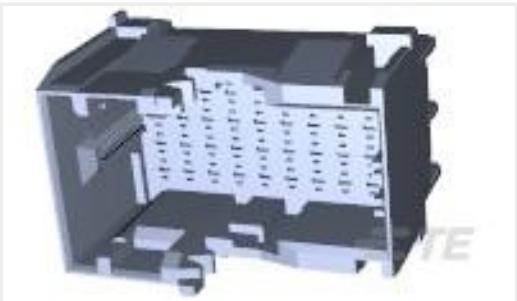


TE Part # 2042274-4  
ELCON MINI 2P VERT HEADER,GOLD, W/ CODING

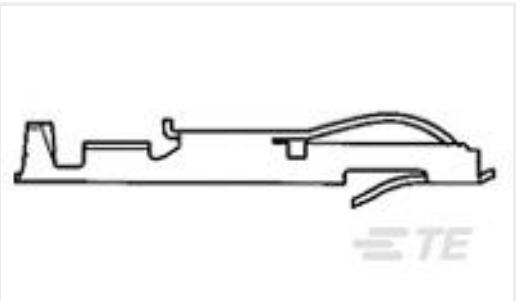


TE Part # 1982295-5  
ELCON MINI 2P RA HEADER,TRAY,W/ CODING

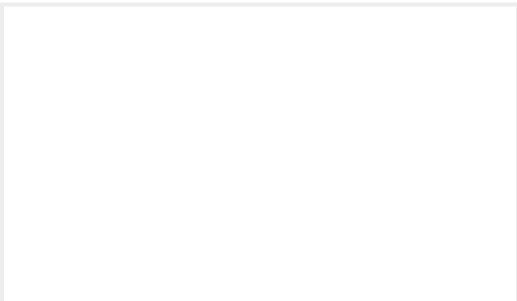
Customers Also Bought



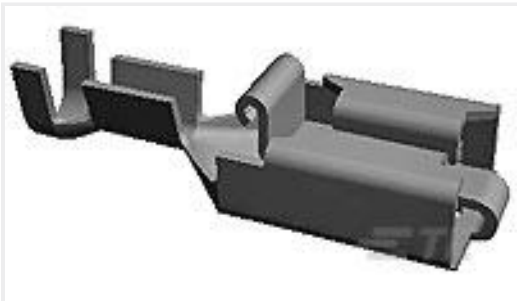
TE Part #1-1718492-4  
1.5MM TAB HSG 36 POS ASSY



TE Part #5-583853-3  
TWIN LEAF TERM. STRIP CSTL



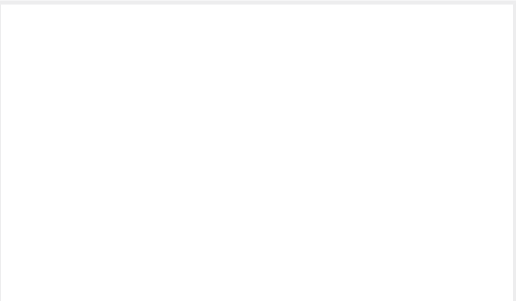
TE Part #2328874-1  
QSFP28, 1X4, CAGE ASSEMBLY, SPRING, HS



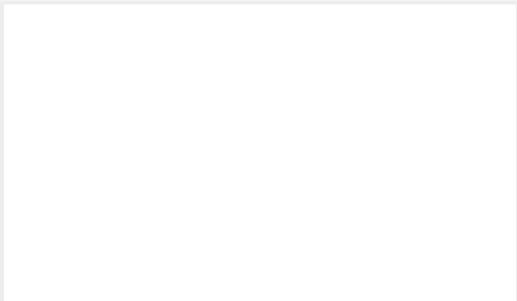
TE Part #160759-1  
PL 250 TERMINAL REC 0.5-1.5 MM2 BR



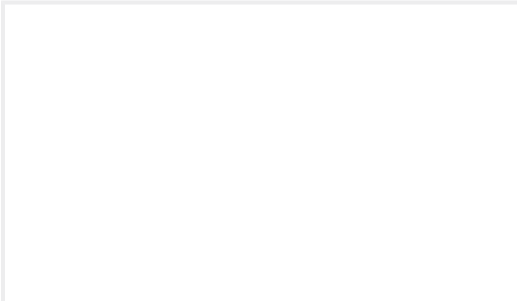
TE Part #2178186-3  
ELCON MINI 2P CABLE CONN,6MM2, W/ (B)



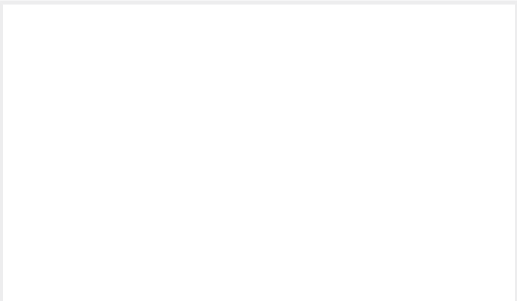
TE Part #2835317-1  
FOSM GLARO LEAD 4.8 FULLAXS LC-FXS 1M



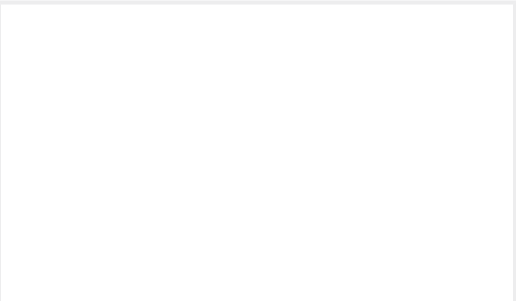
TE Part #2159441-2  
MICRO USB PLUG TO 10 POS MODULAR JACK



TE Part #2835319-2  
FOSM LEAD 4.8 FULLAXS LC/SPX-LC /SPX 2M



TE Part #2-2835317-0  
FOSM GLARO LEAD 4.8 FULLAXS LC-FXS 20M



TE Part #1-1997963-1  
DC POWER CABLE WCDMA

Documents

Product Drawings

ELCON MINI 2P CABLE CONN,WITH CODING(B)

English

CAD Files

3D PDF

3D

Customer View Model

ENG\_CVM\_CVM\_1982299-3\_B.2d\_dxf.zip

English

Customer View Model

ENG\_CVM\_CVM\_1982299-3\_B.3d\_igs.zip

English

Customer View Model

ENG\_CVM\_CVM\_1982299-3\_B.3d\_stp.zip

English

By downloading the CAD file I accept and agree to the [Terms and Conditions](#) of use.

Datasheets & Catalog Pages



POWER\_CONNECTORS\_CATALOG\_SEC02\_CABLE\_MOUNTED

English

Product Specifications

Application Specification

English