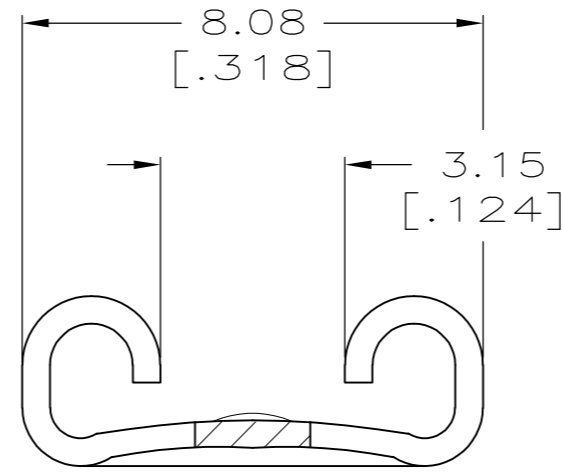
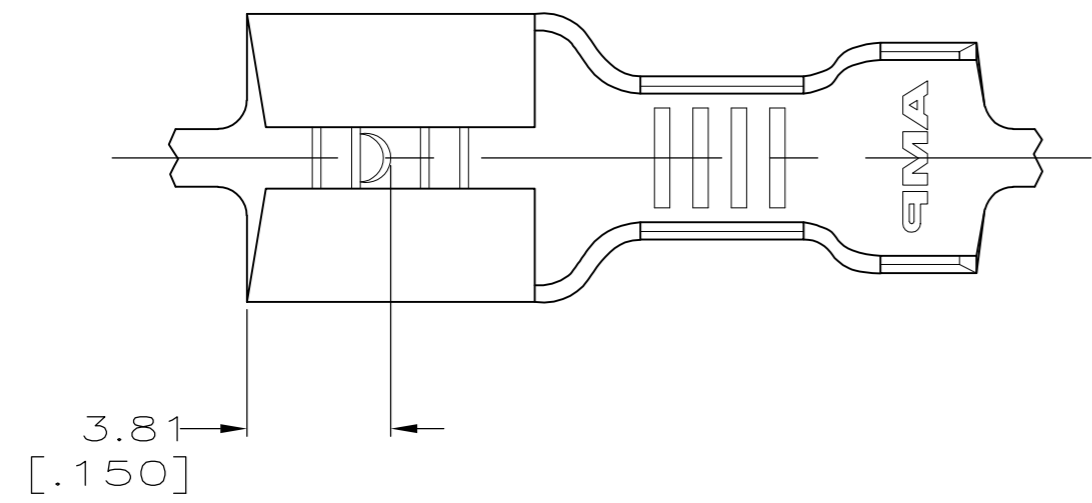


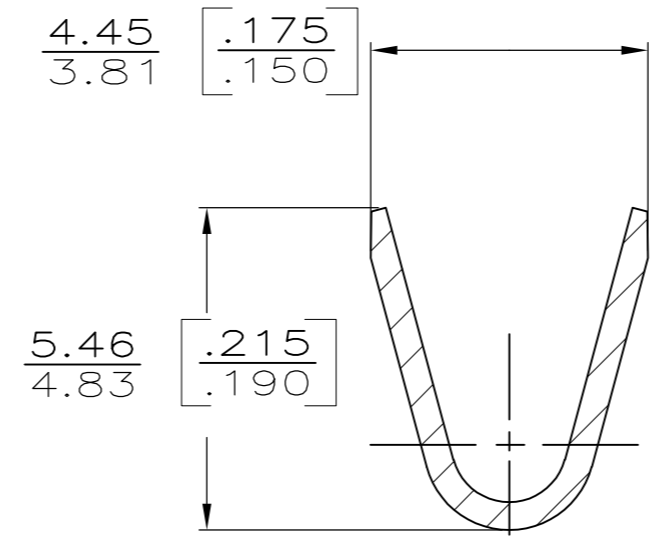
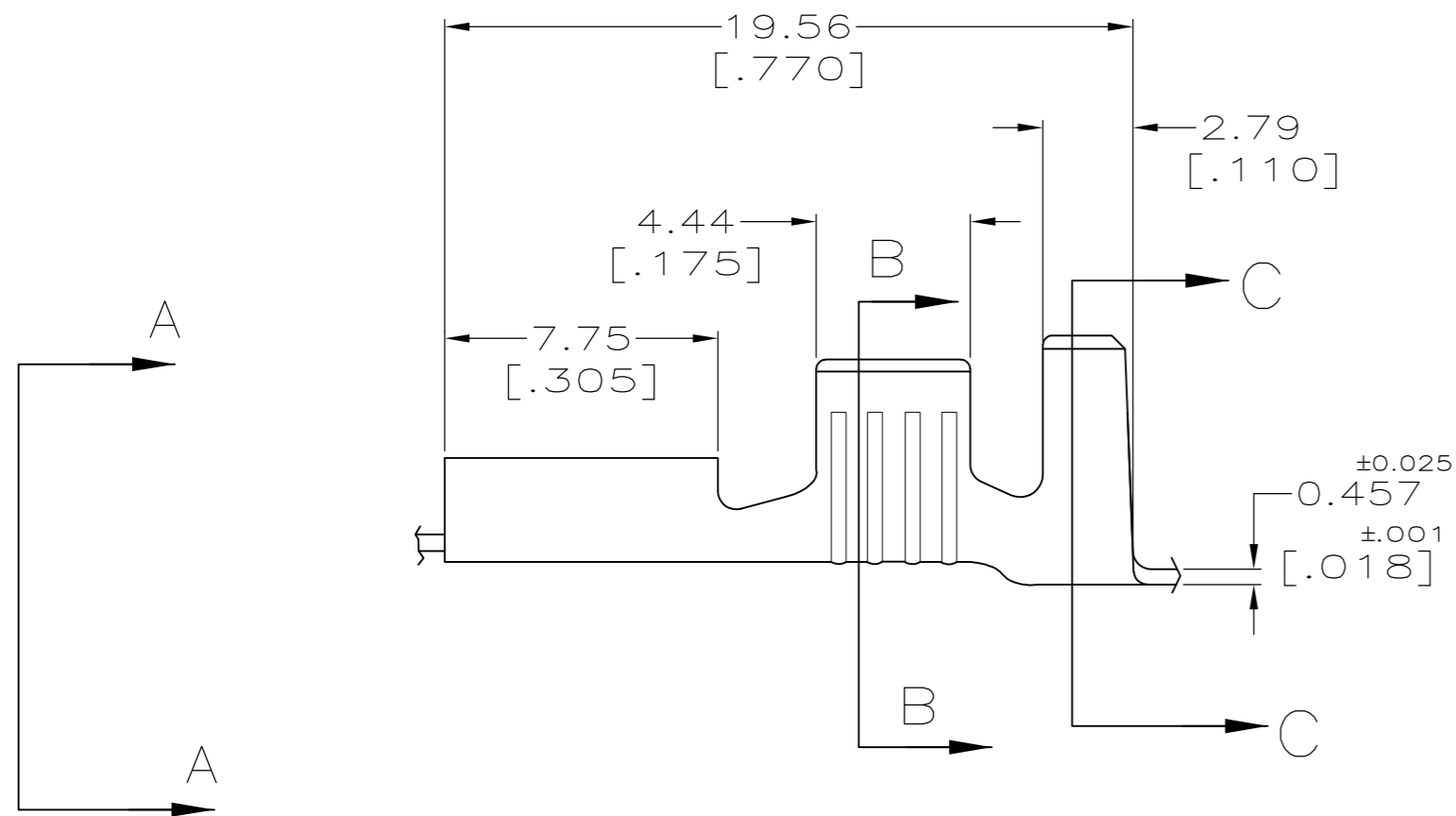
THIS DRAWING IS UNPUBLISHED. RELEASED FOR PUBLICATION
 © COPYRIGHT - By - ALL RIGHTS RESERVED.

LOC	DIST	REVISIONS			
P	LTR	DESCRIPTION	DATE	DWN	APVD
AF	50	AC2	REVISED PER ECO-11-005027	11MAR11	RK HMR

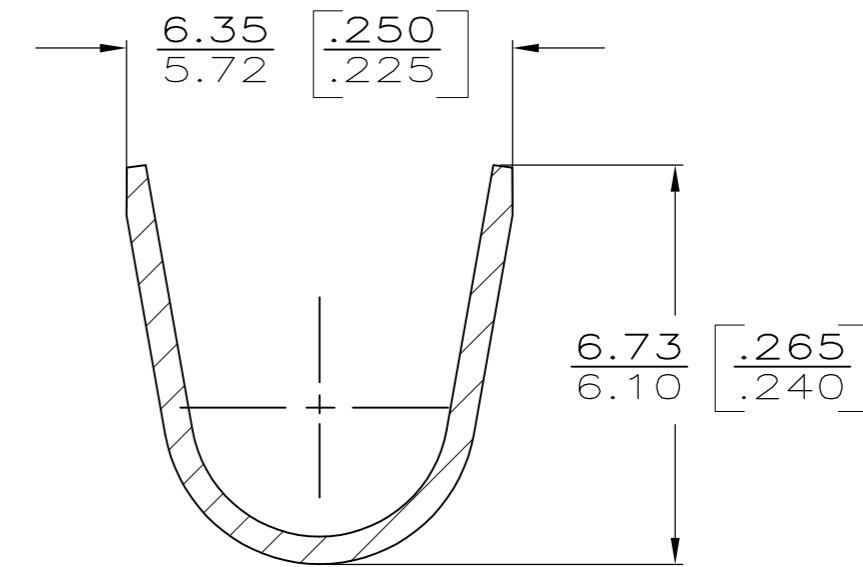


VIEW A-A
SCALE 10:1

- 1 CONTINUOUS STRIP ON REELS
- 2 MAX FIRST INSERTION FORCE, 88.96 NEWTON [20 LBS] USING GAGE 100505.
- 3 WIRE SIZE IS #14-10 AWG
- 4 INSULATION RANGE IS 3.81-5.08 [.150-.200] DIA
- 5 MATING TAB THK IS 0.81±0.025 [.032±.001]
- 6 FOREIGN PRODUCTION ONLY
- 7 OBSOLETE PARTS: OBSOLETE CIS STREAMLINING PER D.RENAUD/D.SINISI



SECTION B-B
SCALE 8:1



SECTION C-C
SCALE 8:1

TYPE	WIDTH	STRIP LENGTH	TYPE	WIDTH	HEIGHT	WIRE
F	5.33 [.210]	6.4 [.252]	F	3.30 [.130]	2.108 [.083] 2.413 [.095] 2.921 [.115]	2.0mm [14] 3.0mm [12] 5.0mm [10]
INSUL BARREL CRIMP		±0.38 ±[.015]	WIRE BARREL CRIMP		±0.051 [±.002]	

FINISH	MATERIAL	PART NO.
6/7 OBSOLETE	SILVER	TEMP3 PHOS BRZ
	TIN	TEMP3 PHOS BRZ
OBSOLETE	-	TEMP3 PHOS BRZ
OBSOLETE	SILVER	TEMP4 BRASS
	TIN	TEMPER 4M BRASS
OBSOLETE	-	TEMP4 BRASS
FINISH	MATERIAL	PART NO.

THIS DRAWING IS A CONTROLLED DOCUMENT.

DWN	JR RUTH	7/10/89
CHK	MS FEHER	7/10/89
APVD	C MEYERS	7/10/89
PRODUCT SPEC		
APPLICATION SPEC		
WEIGHT	-	
CUSTOMER DRAWING		

TE Connectivity

RECEPTACLE, FASTON, .250 SERIES

SIZE	A2	CAGE CODE	00779	DRAWING NO	C=42437
SCALE	5:1	SHEET	1 OF 1	REV	AC2