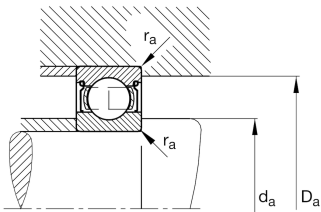
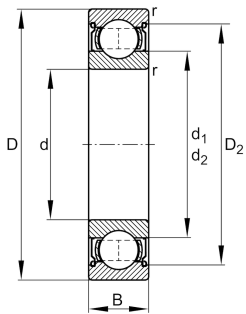


**FAG****6307-Z-C3**

Deep groove ball bearing

Deep groove ball bearing 63...Z, single row, shield , steel sheet metal cage

## Technical information



## Your current product variant

Sealing	Z	Non-contact shield on one Side
Cage	JN	Steel sheet metal
Tolerance class	PN	Normal (PN)
Dimensional / heat stabilization	SN	Rings dimensional stabilized up to 120°
Lubricant	Without	Bearing not greased
Radial internal clearance	C3 (Group 3)	Internal clearance larger than CN
Bore type	Z	Cylindrical

## Main Dimensions &amp; Performance Data

d	35 mm	Bore diameter
D	80 mm	Outside diameter
B	21 mm	Width
C <sub>r</sub>	35,500 N	Basic dynamic load rating, radial
C <sub>0r</sub>	19,100 N	Basic static load rating, radial
C <sub>ur</sub>	1,290 N	Fatigue load limit, radial
n <sub>G</sub>	12,300 1/min	Limiting speed
n <sub>gr</sub>	9,900 1/min	Reference speed
≈m	0.455 kg	Weight



Mounting dimensions

d <sub>a min</sub>	44 mm	Minimum diameter shaft shoulder
D <sub>a max</sub>	71 mm	Maximum diameter of housing shoulder
r <sub>a max</sub>	1.5 mm	Maximum fillet radius

Dimensions

r <sub>min</sub>	1.5 mm	Minimum chamfer dimension
D <sub>1</sub>	65.6 mm	Shoulder diameter outer ring
D <sub>2</sub>	67.6 mm	Caliber diameter outer ring
d <sub>1</sub>	49.3 mm	Shoulder diameter inner ring

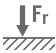





Temperature range

T <sub>min</sub>	-30 °C	Operating temperature min.
T <sub>max</sub>	120 °C	Operating temperature max.

Calculation factors

f <sub>0</sub>	13.1	Calculation factor
----------------	------	--------------------

Characteristics

	Radial load
	Axial load in one direction
	Axial load in two directions
	Grease Lubrication
	Oil Lubrication
	Sealed on one side