

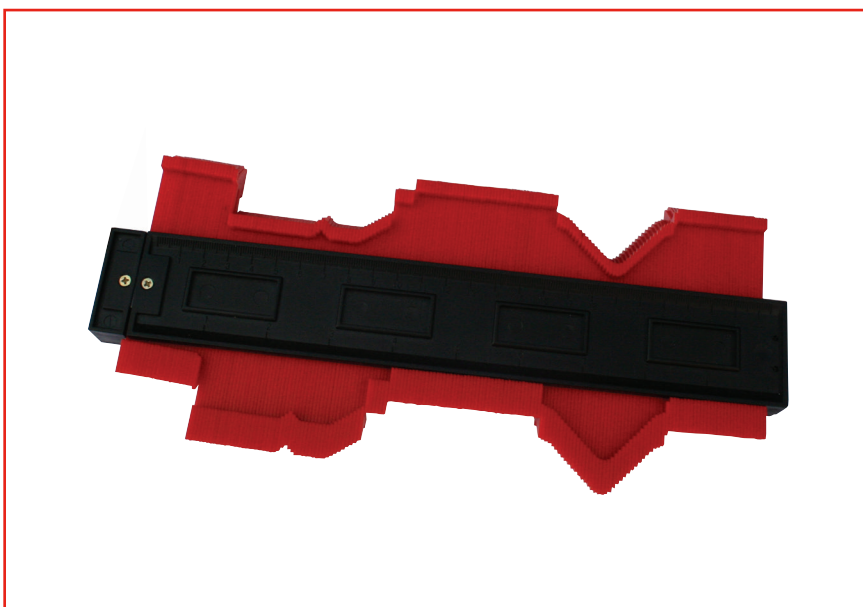


ENGLISH

Datasheet

RS Pro Contour Gauge

RS Stock No: 446-857



Specifications:

Gauge accurately reproduces complex profiles.

Enables fast and easy fitting of various materials flush to required profile

Manufactured from tough plastic to avoid corrosion

4 magnets inserted along body exterior

Maximum profile width: 260mm

Maximum profile depth: 30mm

Individual blade width: 1.4mm

Overall Body Dimensions:

Length: 280mm

Width: 105mm

Thickness: 20mm

Order Code	Manufacturers Code	Description
446-857	52-470-260	Contour Gauge