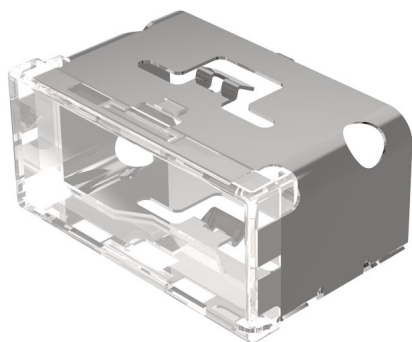


# EAO – Your Expert Partner for Human Machine Interfaces

## 03-901.9 - Lens single-headed uni-colour for pushbutton single-headed

### 03-901.9 - Lens single-headed uni-colour for pushbutton single-headed



*Attention: The preview is based on a sample product. This can differ from your current configuration.*

#### Mounting

Design flush

#### Other Attributes

Weight 0,009 kg  
Dimension 18 x 38 mm

#### Operating-/Indication part

Lens optics translucent  
Lens material Plastic  
Lens colour white ribbed  
Lens illumination illuminative  
Lens profile flat