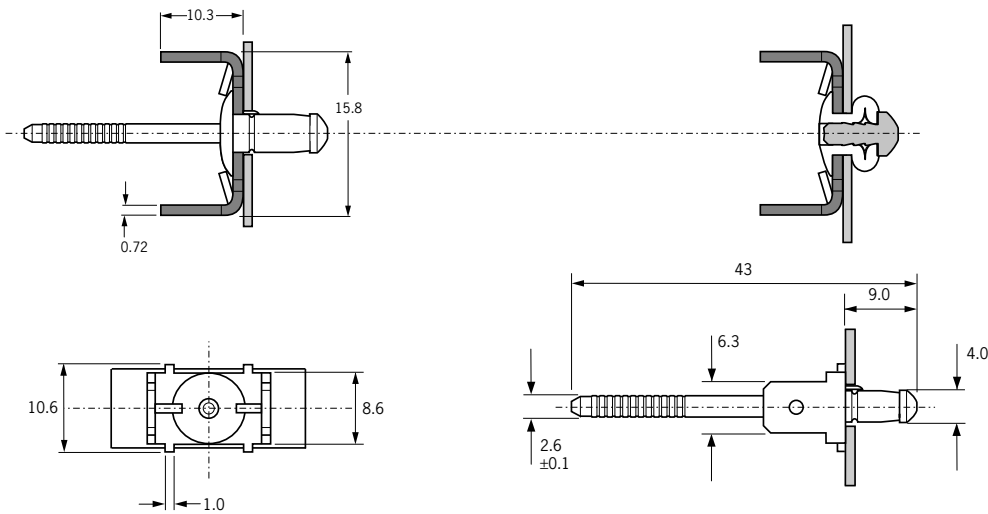


Steel Body and Mandrel  
with Brass Tab

	Material	Finish
Body	Low carbon steel to BS 3111 Type 0 SAE 1008 DIN 1654 QSt 34-2	Zinc plated and yellow passivated to BS EN 12329
Mandrel	Medium carbon steel to BS 3111 Type 1 SAE 1045 Werkstoff 1.0517	Zinc plated and yellow passivated to BS EN 12329
Tab	Brass DIN 17660 CuZn30	



**Dimensions** in millimetres

Hole Size ± 0.05	Grip Range		Part Number
	min.	max.	
5.2	1.0	1.5	<b>OBN11-00509</b>

- Earth Tab Rivet is designed to work on a single phase power supply of 240 volts or below.
- When fitted, Earth Tab Rivet provides a resistance at or below 0.1 ohms.
- Earth Tab Rivet has been tested and approved to EN 60335-1 (the procedure used by BEAB) and BS 3456 Part 201, clauses 27, 28, 31.
- To ensure the integrity of the connection, Textron Fastening Systems recommend the use of a connector which has a mechanical locking pip to lock into the hole of the male tab.