

PART NAME

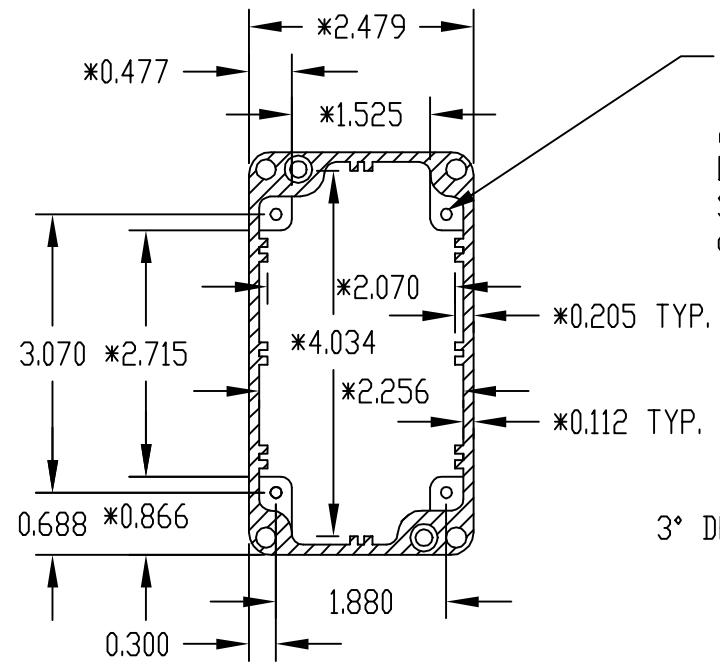
NEMA 4 ENCLOSURE

PART No.

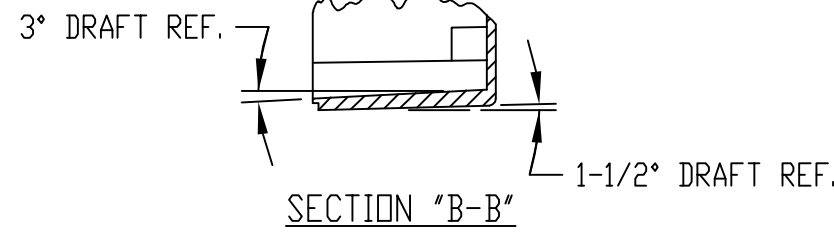
AN-1303, AN-1303-G, AN-2803 & AN-2803-B

REV. DATE

2-12-04



0.125 DIA. x 0.350 DEEP
(4) PLACES
ACCEPTS EITHER M3.5 METRIC
OR #6 STD. SHEET METAL
SCREWS x 0.250" LG.
(NOT SUPPLIED)



MATERIAL: ALUMINUM ALLOY #ADC-10

FINISH: NATURAL (NO SUFFIX)
GRAY (SUFFIX -G)
SMOOTH BLACK (SUFFIX -B)

FOUR (4) M4 x 20mm (0.787") LG. SCREWS
SUPPLIED FOR ASSEMBLY.

TWO (2) M3.5 x 6mm LG. NICKEL PLATED
SCREWS AND WASHERS SUPPLIED FOR
GROUNDING

ALL DIMENSIONS HAVE ±0.015 TOLERANCE
UNLESS OTHERWISE SPECIFIED

