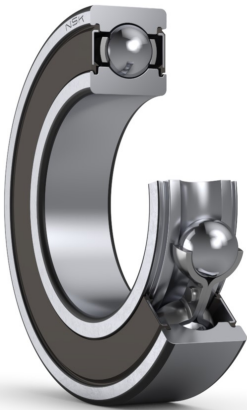




# PRODUCT DATASHEET

Datasheet creation date: 2025/07/08 5:13 (UTC)



## 6202VV

### Single-Row Deep Groove Ball Bearings

#### Parts Number

6202VVC3
----------

#### Boundary Dimensions

d	15	mm	Bore diameter
D	35	mm	Outside diameter
B	11	mm	Width
r (min.)	0.6	mm	Chamfer dimension

#### Basic Load Ratings

Cr	8400	N	Basic dynamic load rating
C0r	3750	N	Basic static load rating

#### Speeds

Grease	22000	min-1	Grease lubrication
--------	-------	-------	--------------------

#### Abutment and Fillet Dimensions

da (min.)	19	mm	Diameter of shaft abutment
da (max.)	20.5	mm	Diameter of shaft abutment
Da (max.)	31	mm	Diameter of housing abutment
ra (max.)	0.6	mm	Radius of shaft or housing fillet
Dx (min.)	0	mm	Diameter of snap ring recess in the housing
Cy (max.)	0	mm	Distance from outer ring side face to snap ring back face

#### Calculation factors

fo	13.2	Factor
----	------	--------

#### Additional information

z	8	Number of Balls	
Dw	5.953	mm	Ball Diameter

#### Mass

Mass approx.	0.045	kg	Mass approx.
--------------	-------	----	--------------

