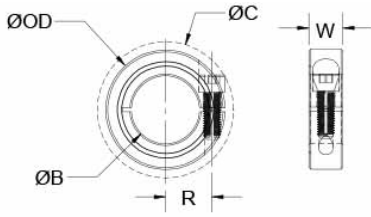




MCL-12-SS

Ruland MCL-12-SS, 12mm One-Piece Shaft Collar, 303 Stainless Steel, Clamp Style, 28mm OD, 11mm Width



Description

Ruland MCL-12-SS is a one-piece shaft collar with a 12mm bore, 28mm OD, and 11mm width. The clamp style design does not mar the shaft, is easy to remove, and is indefinitely adjustable. It is commonly used for guiding, spacing, stopping, mounting, and component alignment. Equipment manufacturers benefit from the tightly controlled face to bore perpendicularity (TIR of $\leq .05\text{mm}$). Perpendicularity is critical for alignment when the shaft collar is used as a load bearing face, mechanical stop, or for mounting components such as gears or bearings. Proprietary processes have been developed by Ruland to maintain superior fit, finish, and holding power. MCL-12-SS is stamped with the Ruland name and bore size for ease of identification. Forged screws test beyond DIN 912 12.9 standards to ensure maximum holding power. MCL-12-SS is machined from solid bar stock to a fine burr free finish and sourced exclusively from North American mills. Ruland uses 303 stainless steel with hardware of like material for consistent corrosion resistance. It is RoHS2 and REACH compliant and manufactured in our Marlborough, MA factory under strict controls using proprietary processes.

Product Specifications

Bore B	12 mm	Bore Tolerance	+0.050 mm / +.012 mm
Outer Diameter OD	28 mm	Clearance Diameter C MAX	32.0 mm
Width W	11 mm	Width Tolerance	+0.076 mm / -.254 mm
Forged Clamp Screw	M4x12	Screw Material	18-8 300 Series Stainless Steel
Hex Wrench Size	3.0 mm	Screw Finish	Bright
Seating Torque	2.5 Nm	Screw Location R	10.01 mm
Number of Screws	1 ea	Material Specification	Type 303 Austenitic, Non-Magnetic Bar
Temperature	-40°F to 350°F -40°C to 176°C	Finish Specification	Bright
Country of Origin	USA	Weight (lbs.)	0.1000
UPC	63452901180		