

Features

- Heavy duty stainless steel 304 construction.
- Unique twist to unlck mechanism
- Includes stainless steel catchplate

RS PRO Door Latches

RS Stock No.: 0335166



RS Professionally Approved Products bring to you professional quality parts across all product categories. Our product range has been tested by engineers and provides a comparable quality to the leading brands without paying a premium price.

Product Description

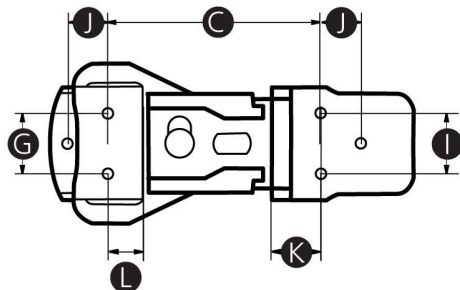
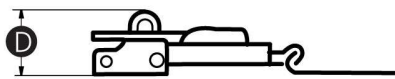
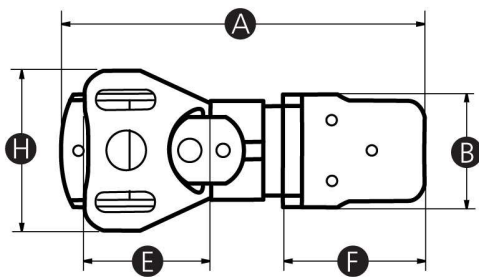
A high quality stainless steel butterfly catch with to twist-to-lock mechanism. Includes stainless steel 304 catch plate. Ideally suited to cases, flight cases, and enclosures.

General Specifications

Length	104mm
Hole size for padlock	6.4mm
Material	Stainless stee
Colour	Silver
Application	Cases, flight cases and industrial enclosures

Mechanical Specifications

A	104
B	34
C	60
D	23
E	38
F	40
G	18
H	48
I	18
J	12
K	12
L	11



Similar Products

Stock No.	Brand	Product Name	Length
0335162	RS PRO	Stainless Steel Butterfly Latch	88mm
0335164	RS PRO	Stainless Steel Butterfly Latch, Padlock Compatible	89mm
0335165	RS PRO	Stainless Steel Butterfly Latch	104mm
0335166	RS PRO	Stainless Steel Butterfly Latch, Padlock Compatible	104mm