



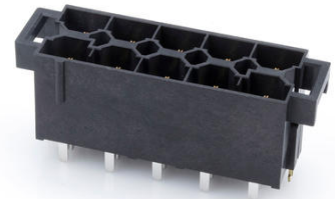
Part Number : [439151208](#)

Product Description : 10.00mm Pitch Mini-Fit Sr. Header, Dual Row, Vertical, 5.10mm Tail Length, 2.36mm PCB Thickness, 0.76µm Gold (Au) Selective Plating, 10 Circuits

Series Number : 43915

Status : Active

Product Category : PCB Headers and Receptacles



Documents & Resources

Drawings

[439151208 sd.pdf](#)

3D Models and Design Files

[STEP AP242](#)


[SOLIDWORKS](#)

[Creo](#)

[Symbol and Footprint \(Multi-Format\)](#)

Product Environment Compliance

Compliance

GADSL/IMDS	Compliant with Exemption 33; 44; 34
China RoHS	 per SJ/T 11365-2006
EU ELV	Not Relevant
Low-Halogen Status	Not Low-Halogen per IEC 61249-2-21
REACH SVHC	Not Contained per D(2025)4165-DC (25 June 2025)
EU RoHS	Compliant per EU 2015/863

[Compliance Statements](#)

- EU RoHS
- REACH SVHC

- Low-Halogen

Industry Documents

- IPC 1752A Class C
- IPC 1752A Class D
- Molex Product Compliance Declaration
- IEC-62474
- chemSHERPA (xml)

Substances of Interest

- PFAS

EU RoHS Certificate of Compliance

Additional Product Compliance Information

Part Details

General

Status	Active
Category	PCB Headers and Receptacles
Series	43915
Description	10.00mm Pitch Mini-Fit Sr. Header, Dual Row, Vertical, 5.10mm Tail Length, 2.36mm PCB Thickness, 0.76µm Gold (Au) Selective Plating, 10 Circuits
Application	Power, Wire-to-Board
Component Type	PCB Header
Product Name	Mini-Fit Sr.
UPC	800756521350

Agency

UL	E29179
----	--------

Electrical

Current - Maximum per Contact	50.0A
Voltage - Maximum	600V

Physical

Breakaway	No
Circuits (Loaded)	10

Circuits (maximum)	10
Color - Resin	Black
Durability (mating cycles max)	100
First Mate / Last Break	No
Flammability	94V-0
Glow-Wire Capable	No
Guide to Mating Part	No
Keying to Mating Part	None
Lock to Mating Part	Yes
Material - Metal	Brass
Material - Plating Mating	Gold
Material - Plating Termination	Tin
Material - Resin	High Temperature Thermoplastic
Net Weight	22.510/g
Number of Rows	2
Orientation	Vertical
Packaging Type	Tray
PCB Locator	Yes
PCB Retention	Yes
PCB Thickness - Recommended	2.36mm
PC Tail Length	5.10mm
Pitch - Mating Interface	10.00mm
Pitch - Termination Interface	10.00mm
Plating min - Mating	0.762µm
Plating min - Termination	2.540µm
Polarized to Mating Part	Yes
Polarized to PCB	Yes
Shrouded	Fully
Stackable	No
Temperature Range - Operating	-40° to +105°C
Termination Interface Style	Through Hole

Solder Process Data

Max-Duration	30
Lead-Free Process Capability	SMC&WAVE

Max-Cycle	3
Max-Temp	235

Mates With / Use With

Mates with Part(s)

Description	Part Number
Mini-Fit Sr. Dual Row Receptacle Housings	<u>43914</u>

This document was generated on Sep 24, 2025