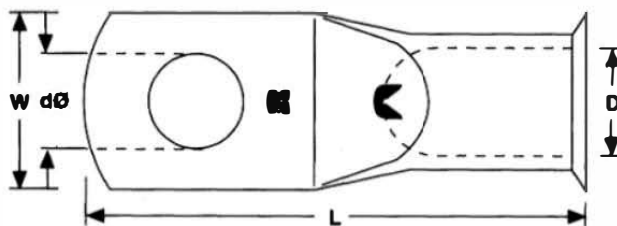




Datasheet

ENGLISH

RS Pro Uninsulated Heavy Duty Tubular Ring Terminals



Specifications

- Manufactured from precision drawn tubes to BS 2871
- Designed to meet performance requirements of BS 4579 Part 1
- Tin plated to BS 1872 Part 2 for corrosion resistance
- Bell mouth cable entry for easy access
- Suitable for use up to temperatures of 150°C

Dimensions (mm)						
RS Pro Stock Number	Conductor Size (mm ²)	Stud Size	Length (L)	Width (W)	Inside Diameter (D)	Hole Diameter (dØ)
119-160	6	6	24.6	10	4	6.3
119-176	6	8	27.3	12.5	4	8.3
531-015	10	5	30	10.4	4.5	5.1
531-021	10	6	30	10.5	4.5	6.3
531-037	10	8	30	12.5	4.5	8.2
531-043	16	6	30.7	11	5.5	6.3
531-059	16	8	30.7	12.5	5.5	8.4
531-065	25	6	32.2	13.1	6.7	6.3
531-071	25	8	32.2	13.1	6.7	8.3
531-087	25	10	36.9	15.1	6.7	10.2
241-4631	35	8	37.6	15.8	8.6	8.3
531-885	35	10	41.5	16.2	8.6	10.3
531-891	50	10	43.2	17.6	9.6	10.3
531-908	50	12	43.2	18.7	9.6	12.8
531-914	70	10	50.4	21.8	12	10.2
531-920	70	12	50.4	21.8	12	12.7
241-4647	95	10	53.2	24.3	13.5	10.3
241-4669	95	12	53.2	24.3	13.5	12.7
241-4653	120	10	59.1	27.5	15	10.3
241-4675	120	12	59.1	27.5	15	12.7
241-4681	150	10	66.3	30.3	16.5	10.2
241-4704	150	12	66.3	30.3	16.5	12.7