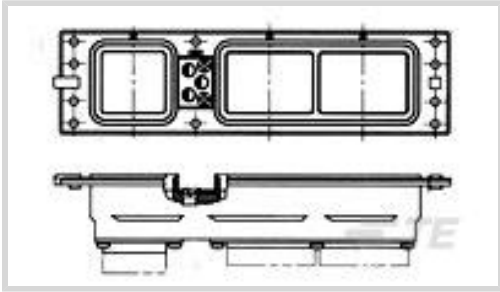




Connectors > PCB Connectors > Backplane Connectors > Rack & Panel Connectors



Connector Product Type: **Connector Assembly**

Rack & Panel Connector Shell Size: **2**

Sealable: **Yes**

Panel Mount Feature Type: **Clinch Nut**

Connector Mounting Type: **Board Mount**

Features

Product Type Features

Connector Product Type	Connector Assembly
Rack & Panel Connector Shell Size	2
Sealable	Yes

Configuration Features

Release Style	Front
---------------	-------

Body Features

Shell Plating Material	Electroless Nickel
Connector & Keying Code	1

Contact Features

Contact Arrangement Code (Module C)	13C2
Contact Arrangement Code (Module B)	Q11
Rack & Panel Connector Contact Style	Quadrax
Contact Arrangement Code (Module A)	150
Contact Size	Size 22
Contact Type	Socket

Mechanical Attachment

Mating Alignment Type	Polarization
Mating Alignment	With



Clinch Nut Quantity	10
Panel Mount Feature Type	Clinch Nut
Connector Mounting Type	Board Mount

Product Compliance

[For compliance documentation, visit the product page on TE.com>](#)

EU RoHS Directive 2011/65/EU	Not Compliant
EU ELV Directive 2000/53/EC	Compliant with Exemptions
China RoHS 2 Directive MIIT Order No 32, 2016	Restricted Materials Above Threshold
EU REACH Regulation (EC) No. 1907/2006	Current ECHA Candidate List: JAN 2025 (247) Candidate List Declared Against: JAN 2025 (247) SVHC > Threshold: Pb (3.7% in 74019106) <b>Article Safe Usage Statements:</b> Do not eat, drink or smoke when using this product. Wash thoroughly after handling. Recycle if possible and dispose of the article by following all applicable governmental regulations relevant to your geographic location.
Halogen Content	Low Halogen - Br, Cl, F, I < 900 ppm per homogenous material. Also BFR/CFR/PVC Free
Solder Process Capability	Wave solder capable to 265°C

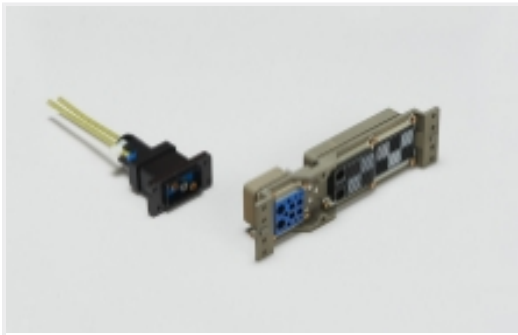
Product Compliance Disclaimer

This information is provided based on reasonable inquiry of our suppliers and represents our current actual knowledge based on the information they provided. This information is subject to change. The part numbers that TE has identified as EU RoHS compliant have a maximum concentration of 0.1% by weight in homogenous materials for lead, hexavalent chromium, mercury, PBB, PBDE, DBP, BBP, DEHP, DIBP, and 0.01% for cadmium, or qualify for an exemption to these limits as defined in the Annexes of Directive 2011/65/EU (RoHS2). Finished electrical and electronic equipment products will be CE marked as required by Directive 2011/65/EU. Components may not be CE marked. Additionally, the part numbers that TE has identified as EU ELV compliant have a maximum concentration of 0.1% by weight in homogenous materials for lead, hexavalent chromium, and mercury, and 0.01% for cadmium, or qualify for an exemption to these limits as defined in the Annexes of Directive 2000/53/EC (ELV). Regarding the REACH Regulations, TE’s information on SVHC in articles for this part number is still based on the European Chemical Agency (ECHA) ‘Guidance on requirements for substances in articles’(Version: 2, April 2011), applying the 0.1% weight on weight concentration threshold at the finished product level. TE is aware of the European Court of Justice ruling of September 10th, 2015 also known as O5A (Once An Article Always An Article) stating that, in case of ‘complex object’, the threshold for a SVHC must be applied to both the product as a whole and simultaneously to each of the articles forming part of its composition. TE has evaluated this ruling based on the new ECHA “Guidance on requirements for substances in articles” (June 2017, version 4.0) and will be updating its statements accordingly.

Also in the Series | [AMP ARINC 600 Series](#)



[Connector Contacts\(57\)](#)



[Rack & Panel Connectors\(54\)](#)

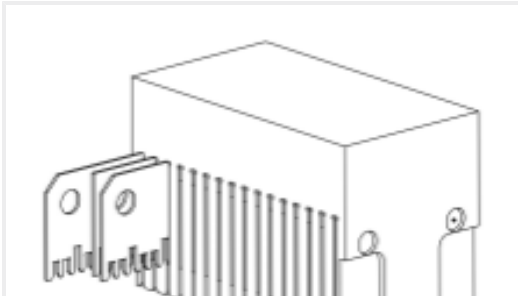


[RF Contacts\(2\)](#)

Customers Also Bought



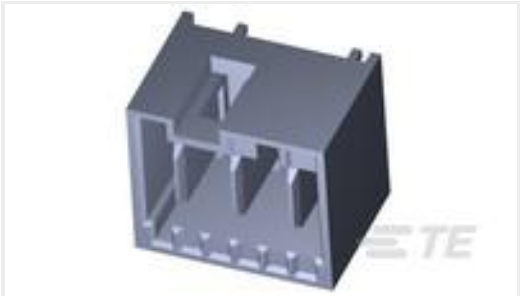
TE Part #1776312-2  
[TSB200002=EUROPA TM-BLK,14.5MM](#)



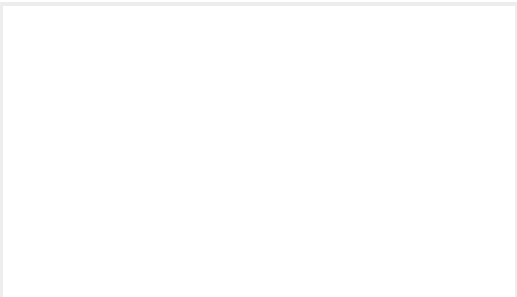
TE Part #1804790-4  
[SEATING TL ASSY, STD, 4 PAIR](#)



TE Part #1484620-1  
[RCPT ASSY,SZ2,FR,ARINC 600](#)



TE Part #3-1971846-3  
[3P, RAST 5 Tab Header, THV](#)



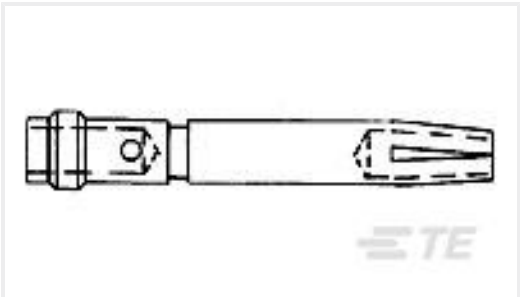
TE Part #1996636-1  
[A600C,SZ8,FILLER,PLUG,](#)



TE Part #767114-3  
[MICT,REC,114,ASY,.025,TAPE,CAP](#)



TE Part #2-1445089-2  
[MICRO MNL HDR ASSY S/ROW AU LF](#)



TE Part #225935-4  
[ARINC COAXICON PIN SIZE 9](#)



TE Part #3-1462050-6  
[HF3 46E = 75OHM 300MW 12V BIST 2COIL](#)

Documents

Product Drawings

[ARINC 600 RECP ASSY, SZ 2](#)

English

CAD Files

[3D PDF](#)

3D

Customer View Model

[ENG\\_CVM\\_CVM\\_1484373-1\\_E.2d\\_dxf.zip](#)



English

Customer View Model

[ENG\\_CVM\\_CVM\\_1484373-1\\_E.3d\\_igs.zip](#)

English

Customer View Model

[ENG\\_CVM\\_CVM\\_1484373-1\\_E.3d\\_stp.zip](#)

English

By downloading the CAD file I accept and agree to the [Terms and Conditions](#) of use.

Datasheets & Catalog Pages

[1308940\\_Sec4\\_arinc600](#)

English

[ARINC 600 Next Generation Receptacle Connector](#)

English