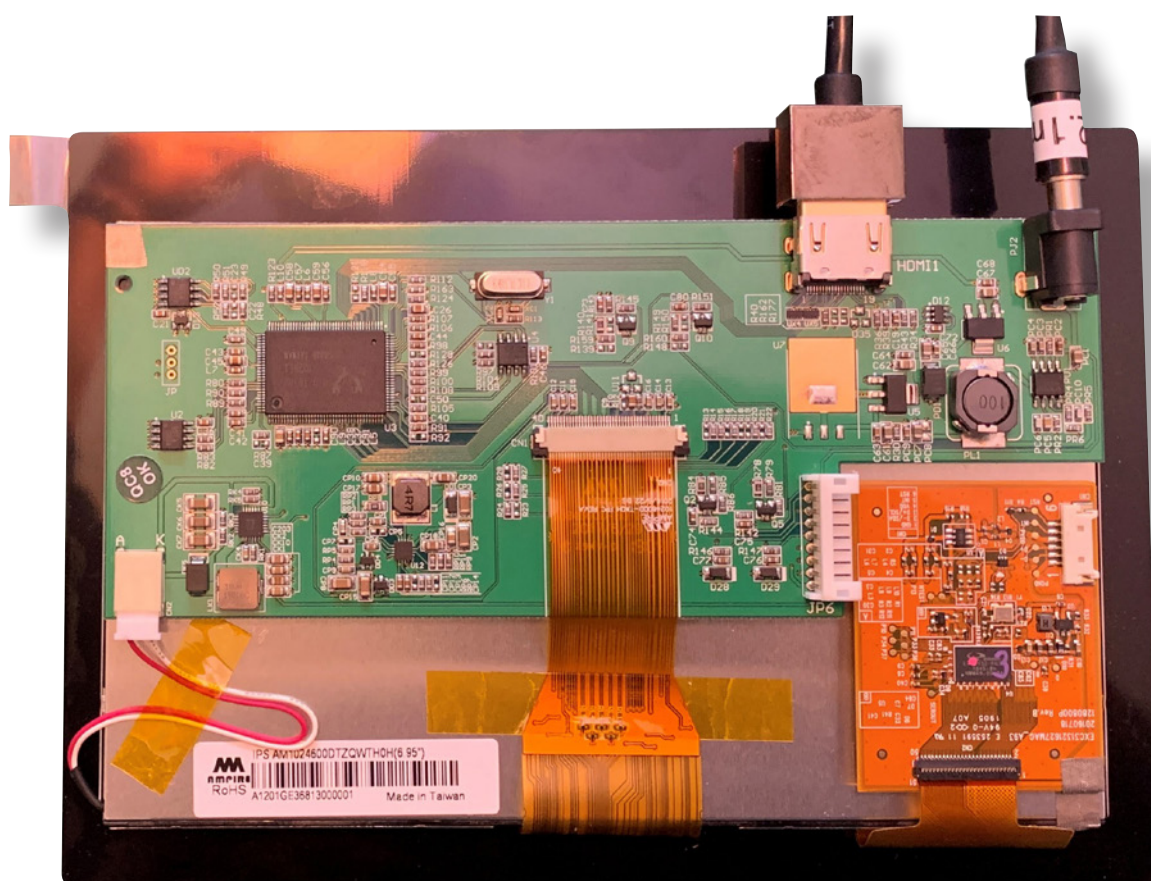


Quick Start Guide

AM-1024600DTZQW-TH0H

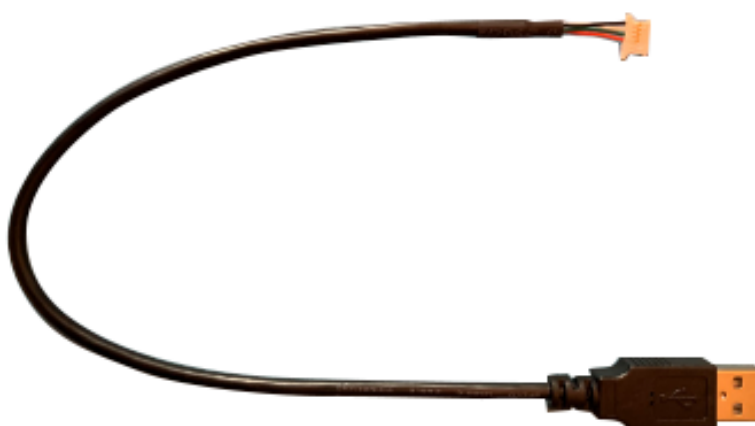
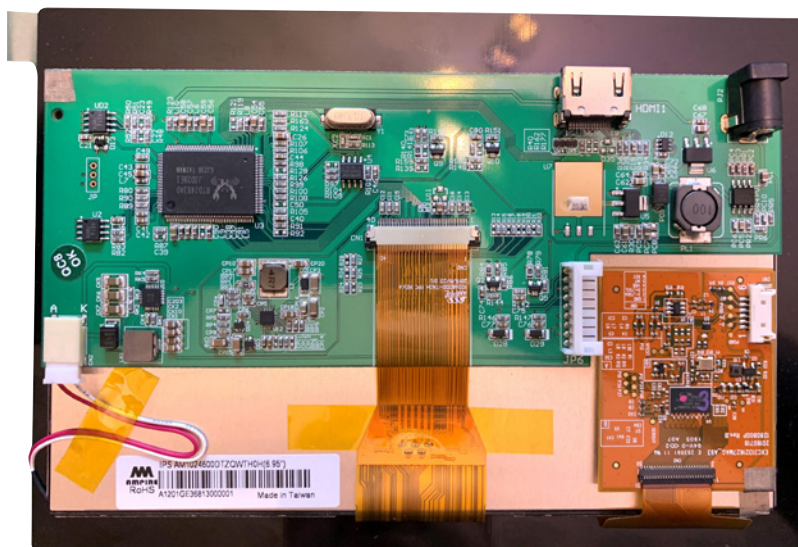


CONTENTS

Kit Content	page 2	Part 1: Connecting the display	page 3
Required Parts not Supplied in Kit	page 2	Part 2: Connecting the touch panel	page 4

KIT CONTENTS

Item	Description	Qty
1	Display with integrated HDMI driver and touch panel	1
2	USB adapter cable from IDS Ltd	1



REQUIRED PARTS NOT SUPPLIED IN THE KIT

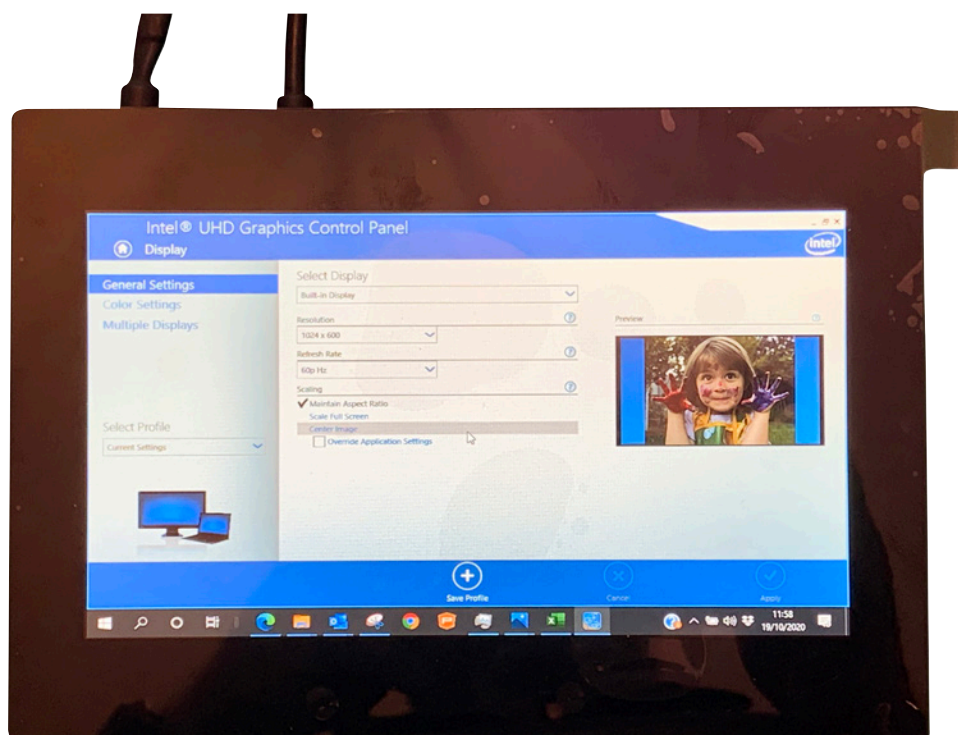
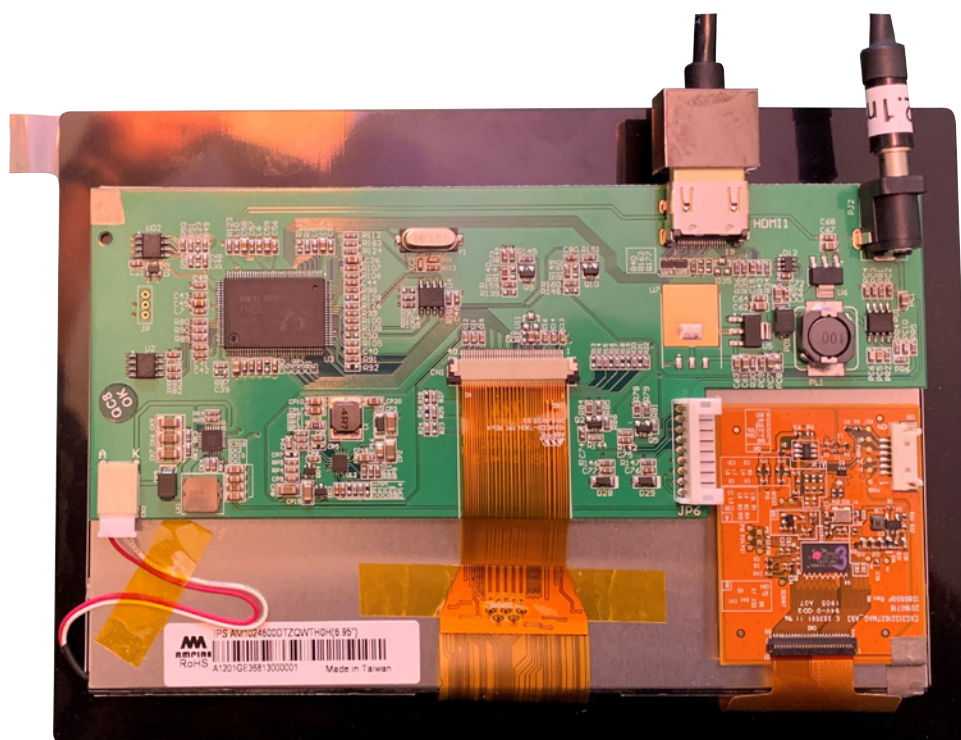
Item	Description	RS Part Number
1	12V 2A Power supply with 2.1 mm x 5.5mm DC Jack	144-0971
2	HDMI cable	182-8473

PART 1: CONNECTING THE DISPLAY

Connect the driver card to a power supply and HDMI source

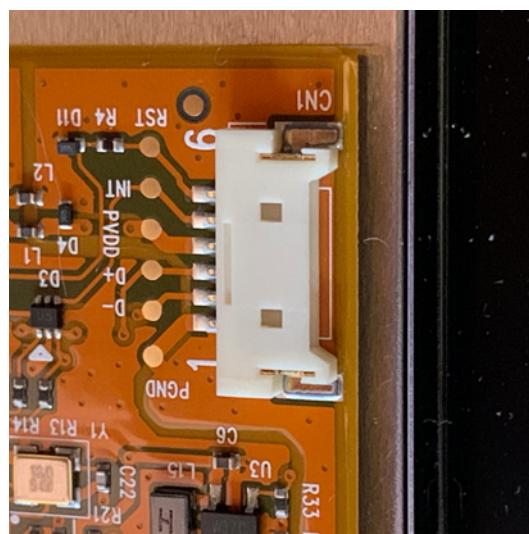
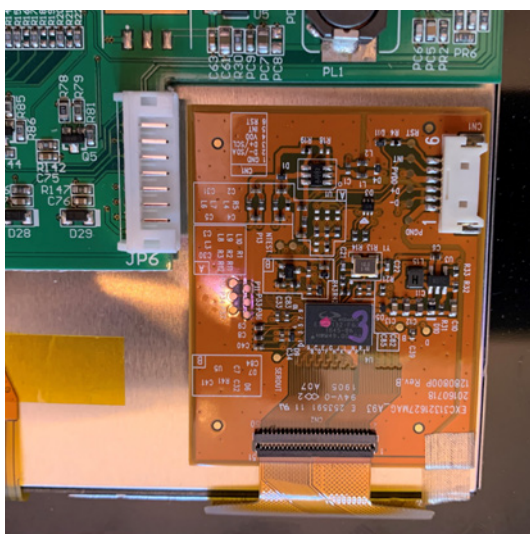
Connect the power connector to the 12V DC power supply using a 2.1mm connector with centre positive and barrel negative

Connect the HDMI connector to your source

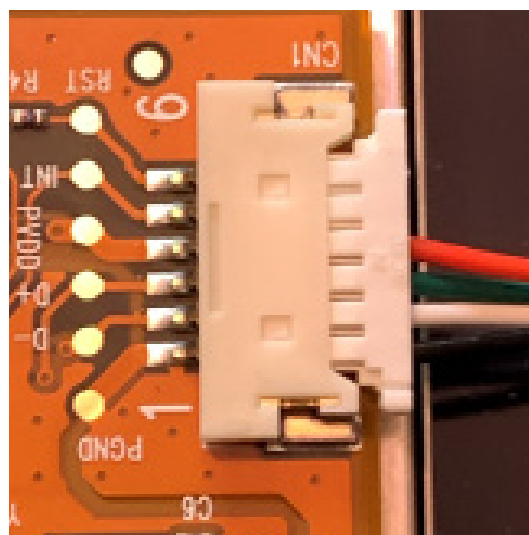
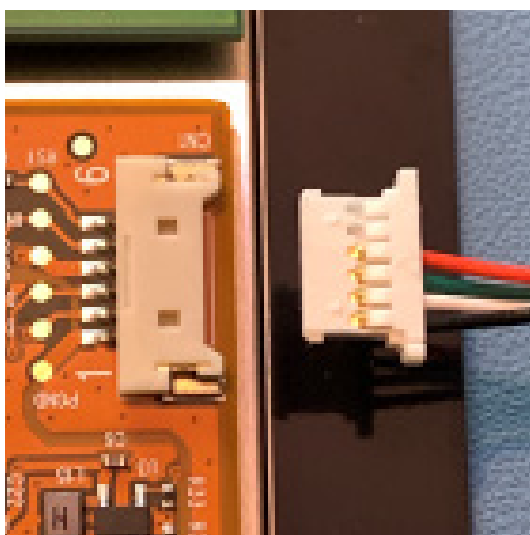


PART 2: CONNECTING THE TOUCH PANEL

The display has a connector with the USB Connections



Note the correct orientation and then push the USB adapter cable connector into the display touch connector



PART 2: CONNECTING THE TOUCH PANEL



Insert the USB connector into your PC

The touch screen will be automatically recognised and installed by Windows 10.

FURTHER INFORMATION

The values contained in this data sheet can change due to technical innovation. Any such changes will be made without separate notification.

If you require further assistance or have a specific or custom enquiry, please contact the IDS team via email or phone. Alternatively please visit our website for more product info and to see our full range.



Unit 2, Berkshire Business Centre,
Berkshire Drive, Thatcham,
Berkshire, RG19 4EW

+44 (0)1635 294600

info@i-lcd.com

www.i-lcd.com

ABOUT IDS

Intelligent Display Solutions was established in 2001 by display industry experts. We have extensive knowledge of both the technical and user interface approaches to designing displays for various applications, using LCD, TFT and OLED technologies. We work with our customers to develop new and innovative displays - some award-winning - to enhance their products.

IDS is a division of Intelligent Group Solutions Ltd (IGS) - a well-established, respected, industry-leading Optoelectronics solutions provider. Much of IGS' business comes from providing semi-custom or custom products, both in component and sub-assembly form. We offer design support and prototyping within the European marketplace, with the capability to deliver production displays to wherever in the world the customer's manufacturing or assembly is being undertaken.

INTELLIGENT GROUP SOLUTIONS DIVISIONS

