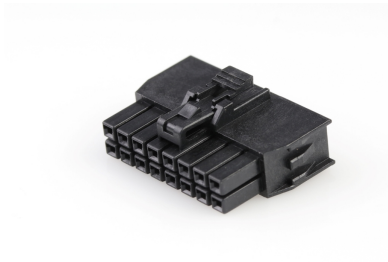




**Part Number :** [1053081216](#)  
**Product Description :** Nano-Fit Receptacle Housing, TPA Capable, 2.50mm Pitch, Dual Row, 16 Circuits, Black, Glow-Wire Capable  
**Series Number :** [105308](#)  
**Status :** Active  
**Product Category :** [Connector Housings](#)



## Documents & Resources

### Drawings

[1053081216\\_sd.pdf](#)  
[PK-105308-100-000.pdf](#)

### 3D Models and Design Files

[1053081216\\_stp.zip](#)

### Specifications

[AS-105300-100-001.pdf](#)  
[1053001000-PS-CH-000.pdf](#)  
[1053001000-PS-ES-000.pdf](#)  
[1053001000-PS-JP-000.pdf](#)  
[1053001000-PS-SK-000.pdf](#)  
[PS-105300-100-001.pdf](#)  
[1053000000-TS-000.pdf](#)  
[1053001000-TS-000.pdf](#)

## Product Environment Compliance

### Compliance

GADSL/IMDS	Not Relevant
China RoHS	
EU ELV	Compliant per 2000/53/EC
Low-Halogen Status	Low-Halogen per IEC 61249-2-21
REACH SVHC	Not Contained per D(2024)7663-DC (21 Jan 2025)
EU RoHS	Compliant per EU 2015/863

[Multiple Part Product Compliance Statements](#)  
- Eu RoHS

- REACH SVHC

- Low-Halogen

#### Multiple Part Industry Compliance Documents

- IPC 1752A Class C

- IPC 1752A Class D

- Molex Product Compliance Declaration

- IEC-62474

- chemSHERPA (xml)

#### EU RoHS Certificate of Compliance

---

## Part Details

### General

Status	Active
Category	Connector Housings
Series	105308
Description	Nano-Fit Receptacle Housing, TPA Capable, 2.50mm Pitch, Dual Row, 16 Circuits, Black, Glow-Wire Capable
Application	Power, Wire-to-Board, Wire-to-Wire
Comments	Operating temperature is -40° to +105° for tin and -40° to +115° for gold
Product Name	Nano-Fit
UPC	889056023771

### Agency

CSA	LR19980
UL	E29179

### Physical

Circuits (maximum)	16
Color - Resin	Black
Flammability	94V-0
Gender	Receptacle
Glow-Wire Capable	Yes
Keying to Mating Part	Yes

Lock to Mating Part	Yes
Material - Resin	Nylon
Net Weight	1.340/g
Number of Rows	2
Packaging Type	Bag
Panel Mount	No
Pitch - Mating Interface	2.50mm
Pitch - Termination Interface	2.50mm
Polarized to Mating Part	Yes
Temperature Range - Operating	-40° to +125°C

---

## Mates With / Use With

### Mates with Part(s)

Description	Part Number
Nano-Fit Vertical Header, Through Hole, 2.50mm Pitch, Dual Row, 16 Circuits, with Kinked Pins, Tin (Sn) Plating, Black, Glow-Wire Capable, Tray	<u>1053101116</u>
Nano-Fit Vertical Header, Through Hole, 2.50mm Pitch, Dual Row, 16 Circuits, with Kinked Pins, 0.38µm Gold (Au) Plating, Black, Glow-Wire Capable, Tray	<u>1053101216</u>
Nano-Fit Vertical Header, Through Hole, 2.50mm Pitch, Dual Row, 16 Circuits, with Kinked Pins, 0.76µm Gold (Au) Plating, Black, Glow-Wire Capable, Tray	<u>1053101316</u>
Nano-Fit Vertical Header, Through Hole, 2.50mm Pitch, Dual Row, 16 Circuits, with Kinked Pins, 0.76µm Gold (Au) Plating, Lubricated, Black, Glow-Wire Capable, Tray	<u>1053101416</u>
Nano-Fit Vertical Header, Through Hole, 2.50mm Pitch, Dual Row, 16 Circuits, with Solder Clips, Tin (Sn) Plating, Black, Glow-Wire Capable, Tray	<u>1053121116</u>
Nano-Fit Vertical Header, Through Hole, 2.50mm Pitch, Dual Row, 16 Circuits, with Solder Clips, 0.38µm Gold (Au) Plating, Black, Glow-Wire Capable, Tray	<u>1053121216</u>

Nano-Fit Vertical Header, Through Hole, 2.50mm Pitch, Dual Row, 16 Circuits, with Solder Clips, 0.76µm Gold (Au) Plating, Black, Glow-Wire Capable, Tray	<u>1053121316</u>
Nano-Fit Vertical Header, Through Hole, 2.50mm Pitch, Dual Row, 16 Circuits, with Solder Clips, 0.76µm Gold (Au) Plating, Lubricated, Black, Glow-Wire Capable, Tray	<u>1053121416</u>
Nano-Fit Right-Angle Header, Through Hole, 2.50mm Pitch, Dual Row, 16 Circuits, Tin (Sn) Plating, Black, Glow-Wire Capable, Tray	<u>1053141116</u>
Nano-Fit Right-Angle Header, Through Hole, 2.50mm Pitch, Dual Row, 16 Circuits, 0.38µm Gold (Au) Plating, Black, Glow-Wire Capable, Tray	<u>1053141216</u>
Nano-Fit Right-Angle Header, Through Hole, 2.50mm Pitch, Dual Row, 16 Circuits, 0.76µm Gold (Au) Plating, Black, Glow-Wire Capable, Tray	<u>1053141316</u>
Nano-Fit Right-Angle Header, Through Hole, 2.50mm Pitch, Dual Row, 16 Circuits, 0.76µm Gold (Au) Plating, Lubricated, Black, Glow-Wire Capable, Tray	<u>1053141416</u>
Nano-Fit Vertical Header, Surface Mount, 2.50mm Pitch, Dual Row, 16 Circuits, 0.76µm Tin (Sn) Plating, Black, Glow-Wire Capable	<u>1054291116</u>
Nano-Fit Vertical Header, Surface Mount, 2.50mm Pitch, Dual Row, 16 Circuits, 0.38µm Gold (Au) Plating, Black, Glow-Wire Capable	<u>1054291216</u>
Nano-Fit Vertical Header, Surface Mount, 2.50mm Pitch, Dual Row, 16 Circuits, 0.76µm Gold (Au) Plating, Black, Glow-Wire Capable	<u>1054291316</u>
Nano-Fit Vertical Header, Surface Mount, 2.50mm Pitch, Dual Row, 16 Circuits, 0.76µm Gold (Au) Plating, Lubricated, Black, Glow-Wire Capable	<u>1054291416</u>
Nano-Fit Right-Angle Header, Surface Mount, 2.50mm Pitch, Dual Row, 16 Circuits, 0.76µm Tin (Sn) Plating, Black, Glow-Wire Capable	<u>1054051116</u>
Nano-Fit Right-Angle Header, Surface Mount, 2.50mm Pitch, Dual Row, 16 Circuits, 0.38µm Gold (Au) Plating, Black, Glow-Wire Capable	<u>1054051216</u>

Nano-Fit Right-Angle Header, Surface Mount, 2.50mm Pitch, Dual Row, 16 Circuits, 0.76µm Gold (Au) Plating, Black, Glow-Wire Capable	<u>1054051316</u>
Nano-Fit Plug Housing, TPA Capable, 2.50mm Pitch, Dual Row, 16 Circuits, Black, Glow-Wire Capable	<u>2014441116</u>
Nano-Fit Plug Housing, TPA Capable, 2.50mm Pitch, Dual Row, 16 Circuits, Black, Panel Mount, Glow-Wire Capable	<u>2014441216</u>
Nano-Fit BMI Plug Housing, TPA Capable, 2.50mm Pitch, Dual Row, 16 Circuits, Black, Glow-Wire Capable	<u>2245561116</u>
Nano-Fit BMI Plug Housing, TPA Capable, 2.50mm Pitch, Dual Row, 16 Circuits, Black, Panel Mount, Glow-Wire Capable	<u>2245561216</u>

#### Use with Part(s)

Description	Part Number
Nano-Fit Connector Position Assurance (CPA) Retainer, UL 94V-0, Red	<u>2171401000</u>
Pre-Crimped Lead Nano-Fit Female-to-Nano-Fit Female, Gold (Au) Plating, 150.00mm Length, 20 AWG, Black	<u>797582129</u>
Pre-Crimped Lead Nano-Fit Female-to-Nano-Fit Female, Gold (Au) Plating, 300.00mm Length, 20 AWG, Black	<u>797582130</u>
Pre-Crimped Lead Nano-Fit Female-to-Nano-Fit Female, Matte Tin (Sn) Plating, 150.00mm Length, 20 AWG, Black	<u>797582139</u>
Pre-Crimped Lead Nano-Fit Female-to-Nano-Fit Female, Matte Tin (Sn) Plating, 300.00mm Length, 20 AWG, Black	<u>797582140</u>
Nano-Fit Female Crimp Terminals	<u>105300</u>
Nano-Fit Terminal Position Assurance (TPA) Retainers	<u>105325</u>

---

#### Application Tooling

Global

Description	Part Number
Extraction Tool for Nano-Fit Power Connectors and Crimp Terminals, 26-20 AWG	<u>638244600</u>