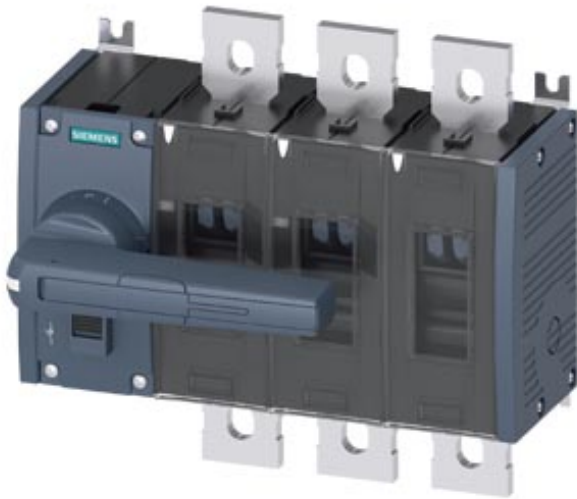


Switch disconnecter 800 A, Size 4, 3-pole Front operating mechanism left Complete unit with direct operating mechanism gray flat terminal



Model	
product brand name	SENTRON
product designation	3KD switch disconnecter
design of the product	Switch
display version / for switch position indicator manual operation	ON-OFF-TEST
design of the operating mechanism	Long rotary knob
type of the driving mechanism	Front operating mechanism
type of the driving mechanism / motor drive	No
General technical data	
number of poles	3
type of device	fixed mounting
size of switch disconnecter	4
mechanical service life (switching cycles) / typical	8 000
electrical endurance (switching cycles)	
• at AC-23 A / at 690 V	500
• at DC-23 A / at 440 V	500

<ul style="list-style-type: none"> • I2t value / with closed switch / at 1000 V / for combination switch +gG/aM SITOR fuse / maximum 	647 250 A ² ·s
<ul style="list-style-type: none"> • I2t value / of the fuse / at 500 V / maximum permissible 	10 400 005 A ² ·s
<ul style="list-style-type: none"> • I2t value / of the gG/aM SITOR fuse / at 1000 V / maximum permissible 	520 000 A ² ·s
<ul style="list-style-type: none"> • I2t value / of the molded case circuit breaker / at 415 V / maximum permissible 	16 000 000 A ² ·s
position / of the switch operating mechanism	at the left end
overvoltage in percent / relative to the operating voltage / at AC / at 400, 500, 690 V / at 50/60 Hz	10 %
overvoltage category	IV
degree of pollution	3

Voltage

operating voltage / with current paths in series	
<ul style="list-style-type: none"> • with degree of pollution 2 / at DC / rated value 	440 V / 3
<ul style="list-style-type: none"> • with degree of pollution 3 / at DC / rated value 	440 V / 3
insulation voltage	
<ul style="list-style-type: none"> • rated value 	1 000 V
surge voltage resistance / rated value	12 kV

Supply voltage

operating current / at AC / rated value	800 A
operating voltage	
<ul style="list-style-type: none"> • at AC / at 50/60 Hz / rated value 	1 000 V

Protection class

protection class IP	IP00
protection class IP	
<ul style="list-style-type: none"> • with closed switch / with cover or cable lug cover 	IP20
<ul style="list-style-type: none"> • on the front 	IP00

Dissipation

power loss [W]	
<ul style="list-style-type: none"> • with conventional rated thermal current / per pole 	25 W
<ul style="list-style-type: none"> • with conventional rated thermal current / per device 	75 W
<ul style="list-style-type: none"> • for rated value of the current / at AC / in hot operating state / per pole 	25 W

Current

<ul style="list-style-type: none"> • operating current / at AC-23 A / at 690 V / rated value 	800 A
---	-------

• operating current / at AC-23 A / at 500 V / rated value	800 A
• operating current / at AC-23 A / at 400 V / rated value	800 A
• operating current / at AC-22 A / at 690 V / rated value	800 A
• operating current / at AC-22 A / at 500 V / rated value	800 A
• operating current / at AC-22 A / at 400 V / rated value	800 A
• operating current / at AC-20 A / at 1000 V / maximum	800 A
• operating current / at AC-21 A / at 400 V / rated value	800 A
• operating current / at AC-21 A / at 500 V / rated value	800 A
• operating current / at AC-21 A / at 690 V / rated value	800 A
• operating current / at AC-23 A / at 500 V / at 50/60 Hz / rated value / maximum	800 A
• operating current / at AC-22 A / at 500 V / at 50/60 Hz / rated value / maximum	800 A
• operating current / at AC-22 A / at 400 V / at 50/60 Hz / rated value / maximum	800 A
• operating current / at AC-22 A / at 690 V / at 50/60 Hz / rated value / maximum	800 A
• operating current / at AC-23 A / at 400 V / at 50/60 Hz / rated value / maximum	800 A
• operating current / at AC-23 A / at 690 V / at 50/60 Hz / rated value / maximum	800 A
• operating current / at DC-20 A / at 1000 V / maximum	800 A / 1
• operating current / at DC-23 A / at 440 V / rated value / note	800 A / 3
• operating current / at DC-23 A / at 220 V / rated value / note	800 A / 2
• operating current / at DC-22 A / at 440 V / rated value / note	800 A / 3
• operating current / at DC-22 A / at 220 V / rated value / note	800 A / 2
• operating current / at DC-21 A / at 440 V / rated value / note	800 A / 3
• operating current / at DC-21 A / at 220 V / rated value	800 A / 2

continuous current / of upstream fuse / at 500 V and 690 V / rated value	1 000 A
continuous current / of upstream fuse / at 1000 V / rated value	1 000 A
continuous current / of upstream molded case circuit breaker / at 415 V / rated value	1 000 A
operating current / at DC / rated value	800 A
let-through current / of the fuse / at 500 V / maximum permissible	118 000 A
let-through current / of the gG fuse / at 690 V / maximum permissible	90 600 A
let-through current / of the gG/aM SITOR fuse / at 1000 V / maximum permissible	43 000 A
let-through current / of the molded case circuit breaker / at 415 V / maximum permissible	72 500 A

Main circuit

operating power	
<ul style="list-style-type: none"> • at AC-23 A / at 400 V / at 50/60 Hz / rated value 	400 kW
<ul style="list-style-type: none"> • at AC-23 A / at 500 V / rated value 	560 kW
<ul style="list-style-type: none"> • at AC-23 A / at 690 V / at 50/60 Hz / rated value 	800 kW
operating current / rated value	800 A

Auxiliary circuit

number of connected NC contacts / for auxiliary contacts	0
number of connected NO contacts / for auxiliary contacts	0
number of connected CO contacts / for auxiliary contacts	0
number of CO contacts / for auxiliary contacts	0
number of NC contacts / for auxiliary contacts	8
number of NO contacts / for auxiliary contacts	8

Suitability

suitability for use	
<ul style="list-style-type: none"> • main switch 	Yes
<ul style="list-style-type: none"> • switch disconnecter 	Yes
<ul style="list-style-type: none"> • EMERGENCY OFF switch 	No
<ul style="list-style-type: none"> • safety switch 	Yes
<ul style="list-style-type: none"> • maintenance/repair switch 	Yes

Product details

product feature / interlock	Yes
product component	
<ul style="list-style-type: none"> • trip indicator 	No
<ul style="list-style-type: none"> • voltage trigger 	No

<ul style="list-style-type: none"> • undervoltage release 	No
<ul style="list-style-type: none"> • undervoltage release with leading contact 	No
product extension / auxiliary switch	Yes
product extension / optional	
<ul style="list-style-type: none"> • motor drive 	No
<ul style="list-style-type: none"> • voltage trigger 	No

Short circuit

short-time withstand current (I _{cw}) / at AC 1000 V/DC 440 V / limited to 1 s / rated value	30 kA
short-circuit current making capacity (I _{cm})	
<ul style="list-style-type: none"> • for switch disconnecter / at 1000 V AC / without fuse link / rated value / minimum 	80 kA
<ul style="list-style-type: none"> • for switch disconnecter / at DC 440 V / without fuse link / rated value / minimum 	42.6 kA
<ul style="list-style-type: none"> • for switch disconnecter / without fuse link / rated value / minimum 	80 kA
conditional short-circuit current / with line-side fuse protection	
<ul style="list-style-type: none"> • at 415 V / by molded case circuit breaker / rated value 	65 kA
<ul style="list-style-type: none"> • at 500 V / by gG fuse / rated value 	100 kA
<ul style="list-style-type: none"> • at 690 V / by gG fuse / rated value 	100 kA

Connections

type of connectable conductor cross-sections / for aluminum conductor	
<ul style="list-style-type: none"> • stranded / with lug 	1x (25 ... 240 mm ²), 2x (25 ... 240 mm ²)
type of connectable conductor cross-sections	
<ul style="list-style-type: none"> • for copper busbar 	'1 x (40 x 10 mm ²), 2 x (40 x 5 mm ²)
type of connectable conductor cross-sections / for copper conductor	
<ul style="list-style-type: none"> • stranded / with lug / acc. to DIN 46235 	1x (25 ... 240 mm ²), 2x (25 ... 240 mm ²)
type of electrical connection	
<ul style="list-style-type: none"> • for main current circuit 	flat connector

Mechanical Design

height	235 mm
width	260 mm
depth	166.5 mm
mounting type	screw fixing
mounting type	
<ul style="list-style-type: none"> • front mounting with 4-hole attachment 	No
<ul style="list-style-type: none"> • front mounting with central attachment 	No
<ul style="list-style-type: none"> • rail mounting 	No





mounting position	any
net weight	7 540 g

Environmental conditions

ambient temperature / during operation	
• minimum	-25 °C
• maximum	70 °C
ambient temperature / during storage	
• minimum	-50 °C
• maximum	80 °C

Certificates

reference code	
• acc. to DIN EN 61346-2	Q
• acc. to DIN EN 81346-2	Q

General Product Approval	Declaration of Conformity	Shipping Approval	other
 CCC  VDE	 EG-Konf.	 LRS	Miscellaneous

Further information

Information- and Downloadcenter (Catalogs, Brochures,...)

<http://www.siemens.com/lowvoltage/catalogs>

Industry Mall (Online ordering system)

<https://mall.industry.siemens.com/mall/en/en/Catalog/product?mlfb=3KD4832-0QE10-0>

Service&Support (Manuals, Certificates, Characteristics, FAQs,...)

<https://support.industry.siemens.com/cs/ww/en/ps/3KD4832-0QE10-0>

Image database (product images, 2D dimension drawings, 3D models, device circuit diagrams, ...)

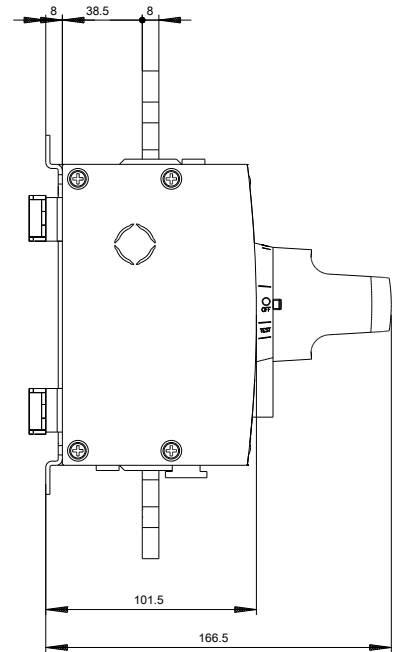
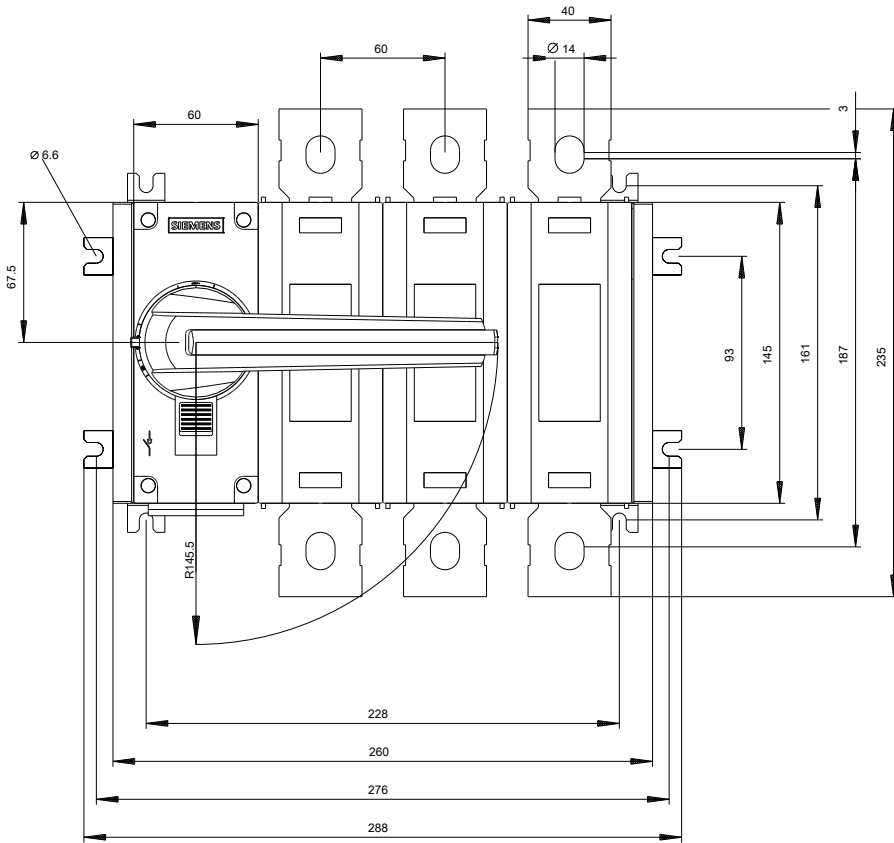
http://www.automation.siemens.com/bilddb/cax_en.aspx?mlfb=3KD4832-0QE10-0

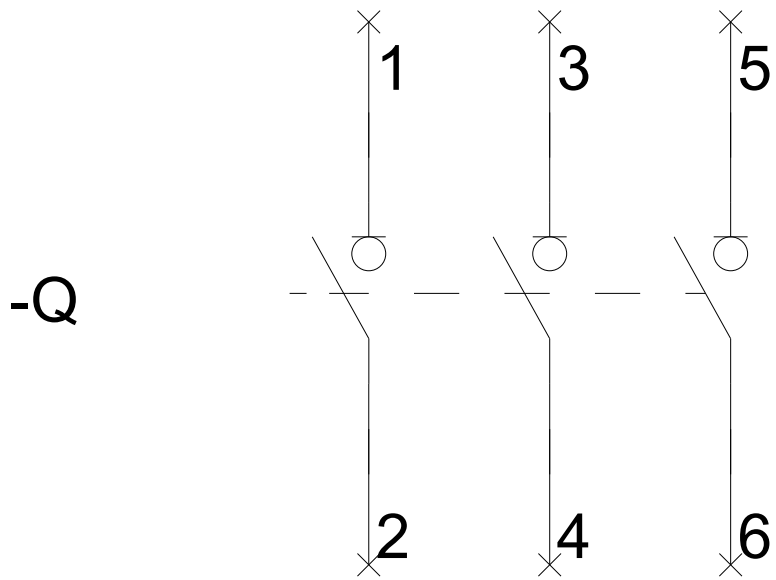
CAX-Online-Generator

<http://www.siemens.com/cax>

Tender specifications

<http://www.siemens.com/specifications>





-CR



