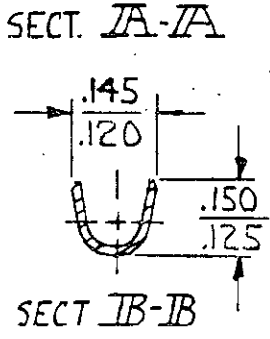
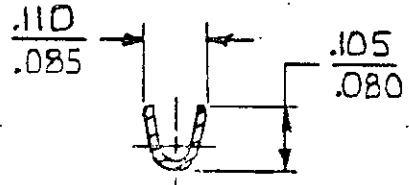
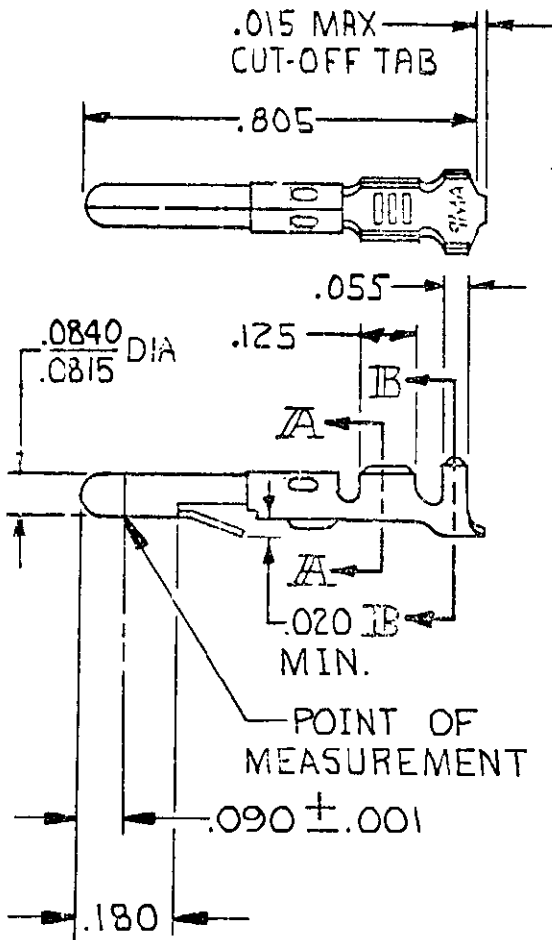


© COPYRIGHT 1965 BY AMP INCORPORATED, HARRISBURG, PA. ALL INTERNATIONAL RIGHTS RESERVED. AMP INCORPORATED PRODUCTS COVERED BY U.S. AND FOREIGN PATENTS AND /OR PATENTS PENDING.

REVISIONS				
LTR	DESCRIPTION	DATE	APPROVED	P F
N	REV PER CM-1734	8-17-88	<del>PKC</del> RS	
P	REVISED PER CM-3285	2-12-91	<del>PKC</del> RS	
R	OBSOLETE -2 PER CM 2708	1-11-93	<del>TB</del> RS	
S	REV PER EC 0730-0142-94	8-15-94	<del>RV</del> RS	



① .000030 GOLD INSIDE WIRE BARREL & ON TIP OF PIN; REMAINDER OF CONTACT IS NICKEL PLATED.

② .000050 NICKEL OVER ENTIRE CONTACT WITH .000030 GOLD OVER MATING AREA.

GOLD	②	.012 PH. BRZ	60613 -6
GOLD	①	BRASS	-5
PRE-TIN		PH. BRZ	-4
PRE-TIN		.012 BRASS	60618-1
FINISH		MATERIAL	PART NO

UNLESS OTHERWISE SPECIFIED DIMENSIONS ARE IN INCHES. TOLERANCES ON: DECIMALS ±.015 ANGLES ±

MATERIAL SEE TABLE

FINISH SEE TABLE

CONTRACT NO  
DR *M. FEHER 11-26-79*  
CHK *D. Heide 1/4/80*  
APPD *[Signature] 1-7-80*  
APPD

INSULATION DIA .100 MAX  
WIRE RANGE 24-18 AWG.

**AMP INCORPORATED**  
Harrisburg, Pa.

NAME **PIN, LOOSE PIECE, COMMERCIAL MATE-N-LOK**

SIZE <b>A</b>	CODE IDENT NO <b>00779</b>	DRAWING NO <b>60618</b>
SCALE	SHEET	