

Rittal – The System.

Faster – better – everywhere.

Patch panels for fibre-optic splicing box, depth-variable, and fibre-optic breakout box, 1 U – DK 7241.024

Date : Apr 26, 2021

ENCLOSURES

POWER DISTRIBUTION

CLIMATE CONTROL

IT INFRASTRUCTURE

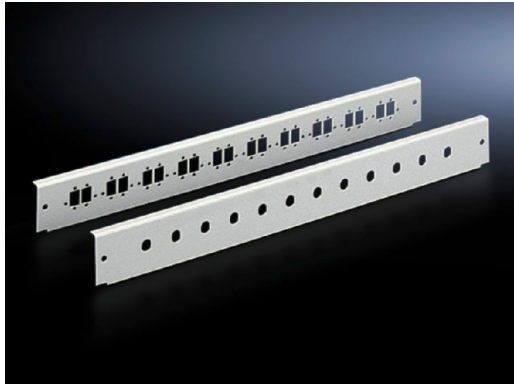
SOFTWARE & SERVICES

FRIEDHELM LOH GROUP



Patch panels for fibre-optic splicing box, depth-variable, and fibre-optic breakout box, 1 U – DK 7241.024

created: 26.04.2021 build on www.rittal.com/uk-en



Product description	
Description:	With cut-outs for population with fibre-optic couplings.
Applications:	for fibre-optic splicing box, depth-variable, and fibre-optic breakout box, 1 U
Material:	Sheet steel
Colour:	RAL 7035
Note on Model No.:	For E-2000 duplex only half of the locations are available.
Product description	
To fit fibre-optic couplings:	E-2000 E-2000 duplex SC LC duplex
Units:	1 U
Number of locations:	24
Packs of:	1 pc(s).
Weight/pack:	0.26 kg

Copper weight (kg per piece):	0
EAN:	4028177435605
Customs tariff number:	94039010
ETIM 7.0:	EC001130
ETIM 6.0:	EC001130
eCl@ss 8.0/8.1:	19170113
eCl@ss 6.0/6.1:	19170107
Product description:	DK Patch panel
Approvals	
Certificates:	NA